

VIVITAR  
AUTO FIXED  
MOUNT LENSES





## Wide-angle lenses

Wide-angle lenses are undoubtedly the most popular fixed focal length types. Vivitar offer a choice of the three most useful and popular designs. The 17mm super-wide opens up a host of creative options; the 24mm is increasing in popularity; whilst the 28mm is still perceived as the 'classic' wide-angle.

Most lenses available in the following fittings: Canon FD, Minolta MD, Nikon AI/S, Olympus OM, Pentax PKA, Yashica/Contax.



17mm



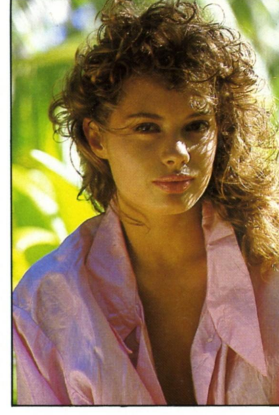
28mm



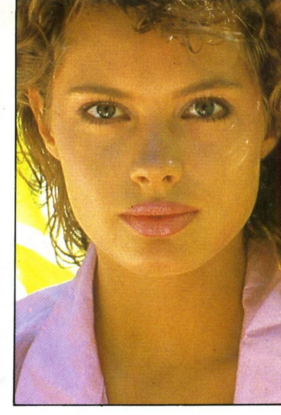
55mm



70mm



105mm



200mm

## Wide-tele zoom lenses

Zooms permit exact subject framing — especially important if you ever shoot colour transparencies. They also tend to offer exceptional value for money, as for example, with the 28 — 200mm 'superzoom' seven focal lengths are covered in one package.

Most lenses available in the following fittings: Canon FD, Minolta MD, Nikon AI/S, Olympus OM, Pentax PKA, Yashica/Contax.

## 17mm f3.5

With its 104° angle of view, this is the lens for those dramatic ultra wide-angle shots. Perfect for interiors, landscapes and a range of subjects only limited by the photographer's imagination! Optical design of 11 elements in 9 groups enhances resolution and contrast, whilst virtually eliminating distortion.

Construction: 11 elements in 9 groups □ Angle of view: 104° □ Min. focusing distance: 25cm □ Max. reproduction ratio: 1:9 □ Weight: 280g □ Min. length: 50.2mm □ Filter Ø: 67mm □ Case: 75A.



## 24mm f2.8

New compact super-wide-angle lens fills the gap between the ultra 17mm and the more conventional 28mm wide angle focal lengths. Increasingly becoming *the* wide-angle choice with its all encompassing perspective and impressive depth of field, it's ideal for sceneries, interiors and group shots.

Construction: 7 elements in 7 groups □ Angle of view: 84° □ Min. focusing distance: 19cm □ Max. reproduction ratio: 1:5 □ Weight: 190g □ Min. length: 40.5mm □ Filter Ø: 52mm □ Case: 75.



Cover & circular shot — Vivitar 28mm

## 28mm f2.8

Compact, lightweight and economically priced, this is one of the most popular lenses in the Vivitar range. Sophisticated optical design ensures extremely high contrast and a short, smooth focusing action. A versatile lens that deserves a place in any outfit.

Construction: 5 elements in 5 groups □ Angle of view: 75° □ Min. focusing distance: 23cm □ Max. reproduction ratio: 1:5 □ Weight: 165g □ Min. length: 38.5mm □ Filter Ø: 49mm □ Case: 75.



Vivitar 24mm

**T**he art of Vivitar is to match product to budget — with no compromise on quality.

This art is perfectly realised in the Vivitar Auto Fixed Mount range.

Using the very latest computer design techniques, Vivitar have put together an unbeatable specification.

All are multiccoated, so minimising flare. All zoom lenses are one-touch zoom and focus. And each features a wide variable aperture. So bringing off the trick of reducing cost and weight without also reducing quality.

## AUTO FIXED MOUNT LENSES

What's more, the precision with which each Fixed Mount Lens fits the relevant camera body is everything the camera people wish themselves. (Hardly surprising — Vivitar engineers work closely with them.)

There's a Vivitar Auto Fixed Mount lens to fit virtually any SLR camera. And a choice to suit the most inventive photographer — from the ultra wide angle 17mm f3.5 to the amazing super 120-600mm f5.6-8 zoom.

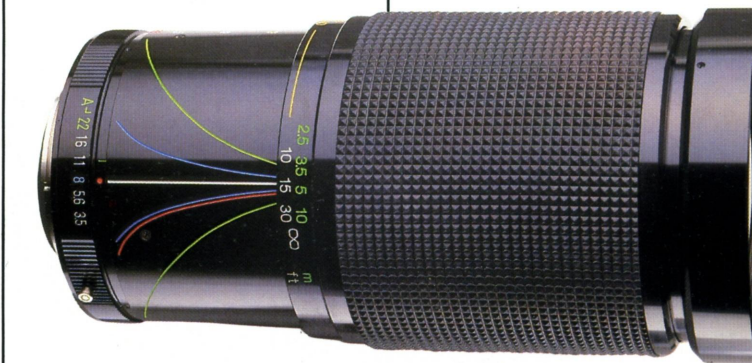
Oh — and there's also a five year guarantee — as if you're likely to need it!



## 28 — 70mm f3.5 — 4.8

Sensational new ultra compact wide-tele zoom with genuine star quality. Permitting exceptional compositional control in the ever popular ranges either side of a normal objective, it is suitable for scenerics and groups at one end of the range and portraits at the other. Fast one-touch zoom/focus operation and macro focusing down to 1/5 life size.

Construction: 8 elements in 8 groups □ Angle of view: 75 — 35° □ Min. focusing distance: 4cm □ Max. reproduction ratio: 1:5 □ Weight: 350g □ Min. length: 65.5mm □ Filter Ø: 52mm □ Case: 100.



## 28 — 200mm f3.5 — 5.3

Since its introduction in the summer of 1986, the 28 — 200mm 'superzoom' has enjoyed meteoric sales. The reasons are not hard to find as this versatile lens covers the ranges of no less than seven fixed focal length types in a lightweight and compact package measuring a mere 108.5mm (at 28mm). An eminently affordable zoom that makes the concept of a one off universal lens to cater for virtually every photographic requirement, a reality. Amazing value.

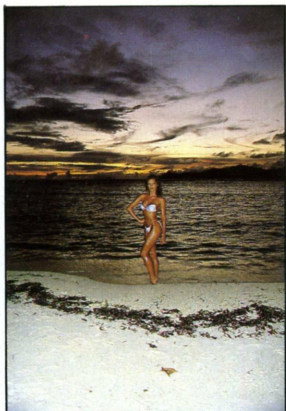
Construction: 18 elements in 16 groups □ Angle of view: 73 — 12° □ Min. focusing distance: 1.1m □ Max. reproduction ratio: 1:4 □ Weight: 690g □ Min. length: 108.5mm □ Filter Ø: 72mm □ Case: 140.



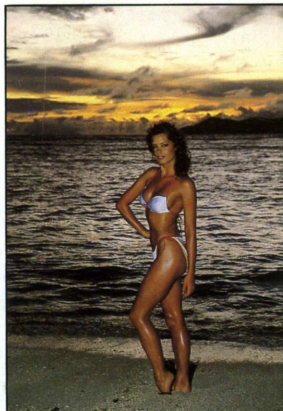
## Mid-long range zoom lenses

These are the big magnification Vivitar zooms that can dramatically pull in distant detail. Vivitar offer three interesting types to choose from; the ever popular 70 – 210mm; the bigger reach 70 – 300mm and the sensational 120 – 600mm.

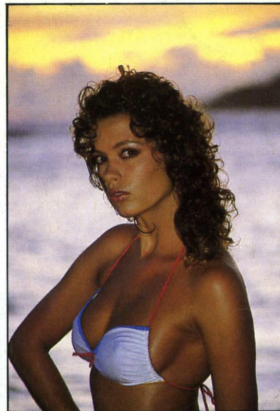
Most lenses available in the following fittings Canon FD, Minolta MD, Nikon AI/S, Olympus OM, Pentax PKA, Yashica/Contax.



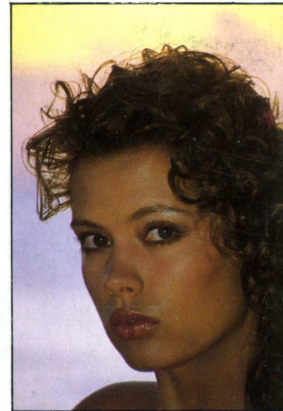
70mm



200mm



300mm



600mm

## 70 – 210mm f4.5 – 5.6

One of the most compact and attractively priced zooms in its class. Covering everything from for example, portraits at one end of the range, to sports at the other, it's easy to see why 3.1 ratio mid-tele zooms are so popular.

Features silky smooth one-touch zoom/focus movement, macro capability to nearly 1/5 life size and Vivitar's renowned optical sharpness. Serious photographers on a tight budget need look no further.

Construction: 12 elements in 8 groups □ Angle of view: 34 – 11° □ Min. focusing distance: 1.3m □ Max. reproduction ratio: 1:5 □ Weight: 380g □ Min. length: 84mm □ Filter Ø: 52mm □ Case: 135.



## 70 – 300mm f4.2 – 5.8

Despite its impressively wide range, this new introduction is nonetheless compact and well balanced permitting comfortable hand held operation. Features a fast f4.2 maximum aperture for its class, one-touch zoom/focus operation and macro to approximately 1/4 life size. A lens that will open up a whole host of pictures making possibilities from portraits, sports, candid and wildlife.

Construction: 13 elements in 9 groups □ Angle of view: 34 – 8° □ Min. focusing distance: 1.5m □ Max. reproduction ratio: 1:3.9m □ Weight: 495g □ Min. length: 109mm □ Filter Ø: 55mm □ Case: 135.

## 120 – 600mm f5.6 – 8

Vivitar designers have really pulled out the stops with this staggering zoom that makes quality distance photography affordable by both the hobbyist and professional user. In spite of its phenomenal reach and rugged construction, the lens is relatively small and lightweight. Unique two collar design permits one-touch zoom/focusing operation

and two integral tripod sockets ensure optimum balance. Super optical performer with high image contrast and resolution. Comes with built-in hood and smart custom carrying case.

Construction: 15 elements in 11 groups □ Angle of view: 10° – 2° □ Min. focusing distance: 4m □ Max. reproduction ratio: 1:6 □ Weight: 2,255g □ Min. length: 285mm □ Filter Ø 82mm □ Case: Included.



**Vivitar**