

## SERVICING

Tamron Lenses are optics of the highest quality that will give years of trouble-free service under normal conditions. Your dealer is interested in your deriving the maximum use and pleasure from your lenses and will be pleased to give you free information and to help you with any problems you might have.

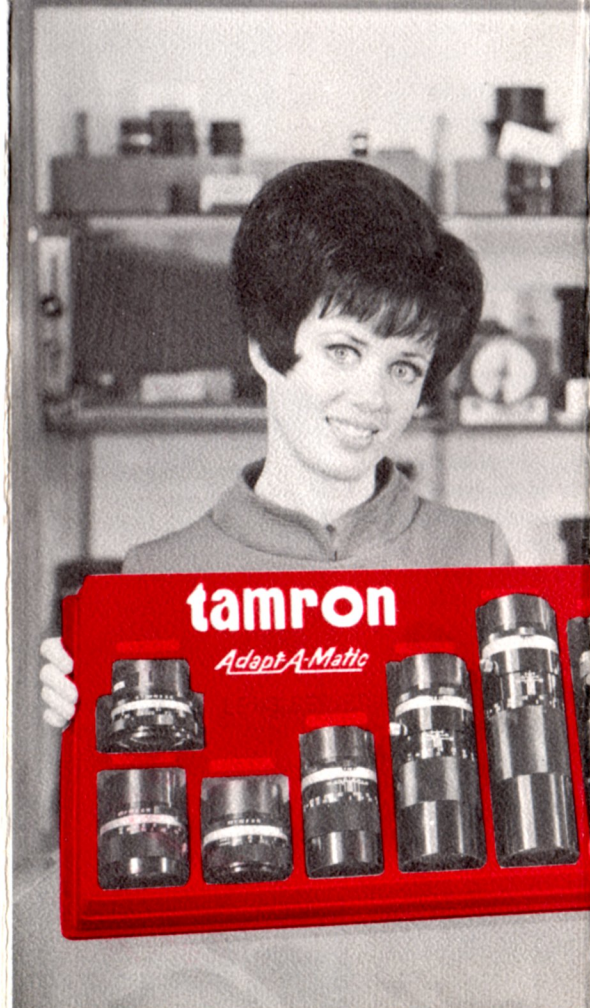
## REPAIRING

Tamron Lenses are sold with a Five-Year Guarantee against defective workmanship or materials. Lenses should be taken to your dealer when repairs are indicated. He will, if necessary, send them to Burke & James, Chicago, Ill., Tamron's Authorized U. S. Repair Station, where they will receive expert attention.

## Guarantee

Tamron Lenses are guaranteed for five years against defects of workmanship or parts. A lens registration certificate accompanies each lens and, when properly filled out, validates the guarantee.

**WE HAVE ALL MODELS  
IN STOCK**



**Most Popular Choice!**

**✕ tamron**

**FULLY AUTOMATIC S-L-R**

**LENS**

**SYSTEM**

***Look for this display . . .***

# tamron

## FULLY AUTOMATIC SLR LENS SYSTEM

# features

### OPTICAL EXCELLENCE

Tamron Lenses are of professional quality for ease of handling and sharpest results. In many cases they are superior to "original equipment" lenses costing up to twice as much.

### SINGLE LENS REFLEX ADAPTABILITY

The six adapters presently available will fit all 7 Tamron Lenses to 27 of today's most popular SLR cameras. Other adapters will soon be available covering many more SLR's.

### CHOICE OF FOCAL LENGTHS

Tamron offers a range of focal lengths from 28mm through 80-250mm Zoom (and two more lenses are on the way). Start with one or more lenses and build your system until you cover all your needs!

### INTERCHANGEABILITY

With only a change in adapters you may switch Tamron Lenses from one type camera to another. No need to be bound to any one camera—Tamron Adapt-A-Matics make it easy to switch!

# tamron

## *Adapt-A-Matic*

## LENS MOUNTS

### TAMRON ADAPTERS

#### Fit These SLR's

P-CS—Pentax, Praktica, Edixa, Yashica Penta J, J3, J4 and J5; Mamiya TL.

N-IF—Nikon F, Fotomic, Nikkormat FS and FT; Nikkorex F.

S-R—Minolta SR1, SR2, SR7.

C-AF—Canon FP, FT, FX and Pellix.

M-A—Miranda F, G, Automex III and Sensorex.\*

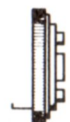
K-A—Konica Autoreflex.



For  
Miranda



For  
Minolta



For  
Nikon



For  
Canon



For  
Pentax



For  
Konica

*See Tamron Today . . . Order Right Away!*

**7 Lenses . . . with a perfect combination . . . of price, quality and interchangeability!**





## 70mm-220mm F.4 ZOOM

A rugged, helical transport mechanism gives this great zoom lens image quality that equals fixed lenses. An infinite range of picture-taking capabilities, running a full gamut from moderate telephoto all the way to dramatic 4X magnification. One quality lens for portraits, wildlife, nature studies, sports, scenics—and only a ¼ turn of the zoom ring covers the entire zoom range. Here is a lens that challenges you to new heights in your quest for more interesting photographs.

Specifications: Focal length 70mm to 220mm (70, 85, 105, 125, 150, 180, and 220)—Aperture range F4-F22 (4, 5.6, 8, 11, 16, 22)—Angle of view at infinity—70mm-34°10', 220mm-11°10'—Minimum focus 6.5 feet—Standard tripod socket ring rotatable through 360°



## 80mm-250mm F3.8 ZOOM

A really fast zoom lens that gets the picture even in dim light. In fact, the fastest zoom lens in its range . . . anywhere! Opens new opportunities to the creative photographer and gives him pictures free of distortion and focus shift. Incredibly sharp and brilliant at all focal length settings, all apertures. And—it's light enough for hand-held grab-shots.

Specifications: Focal length 80mm to 250mm (80, 100, 120, 150, 180 and 250)—Aperture range F3.8-F22 (3.8, 5.6, 8, 11, 16 and 22)—Angle of view at infinity—80mm-30°, 250mm-9°48'—Minimum focus 6.5 feet—Standard tripod socket ring rotatable through 360°



## 300mm F5.6 Telephoto

You can shoot close-ups from w-a-y back with this outstanding 6X telephoto—unnoticed, unobserved by your subjects. You'll discover dramatic, frame-filling shots that can only be had with a lens that magnifies 6 times. Wonderful for sports, aerials, candid.

Specifications: Focal length 300mm—Aperture range F5.6-F22 (5.6, 8, 11, 16, and 22)—Angle of view at infinity 8°12'—Weight 1 lb. 12 oz.—Built-in collapsible lens hood—Standard tripod socket ring rotatable through 360°

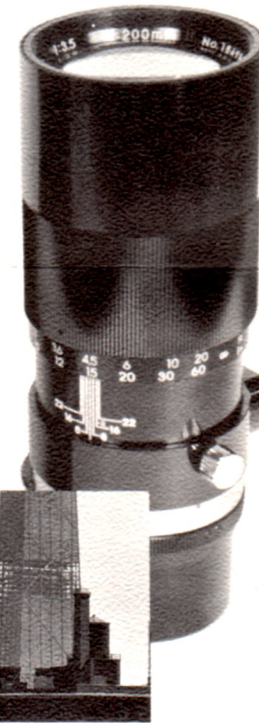


*Photo made with normal (50mm) lens. Compare coverage with other photos on this page.*

## 200mm F3.5 Telephoto

Bore in . . . pick up the ball-carrier at the line of scrimmage . . . the runner sliding for second. Or—take delicate, beautifully detailed nature and wildlife pictures. Four-time magnification of this superior quality Tamron Telephoto will expand your world of picture-taking possibilities.

Specifications: Focal length 200mm—Aperture range F3.5-F22—Minimum focus 6.5 feet—Weight 1 lb. 12 oz.—Standard tripod socket ring rotatable through 360° Built-in collapsible lens hood



## 35mm F2.8 Wide Angle

Shoot wide-view pictures from tight places . . . or compose sweeping scenics. Get great depth of field with this Wide Angle lens that focuses to 1 foot!

Specifications: Focal length 35mm—Aperture range F2.8-F16—Angle of view at infinity 64°—Weight 9 oz.—Minimum focus 1 foot



## 135mm F2.8 Auto

135mm is one of the most popular focal lengths in 35mm photography and Tamron's version of the moderate telephoto is superb.

Specifications: Focal length 135mm—Aperture range F2.8-F22—Angle of view at infinity 18°6'—Minimum focus 5 feet—Weight 14.6 oz.—Built-in collapsible lens hood



## 28mm F2.8 Super Wide Angle

Extreme wide-angle effects are "in" and you can get them all with this quality Tamron lens. Depth-of-field is so great you can almost use this as a universal-focus lens.

Specifications: Focal length 28mm—Aperture range F2.8-F16—Angle of view at infinity 75°—Helical focusing—Weight 12.5 oz.



**7 Lenses . . . with a perfect combination . . . of price, quality and interchangeability!**