

***Part 5***



***Parts  
Catalog***



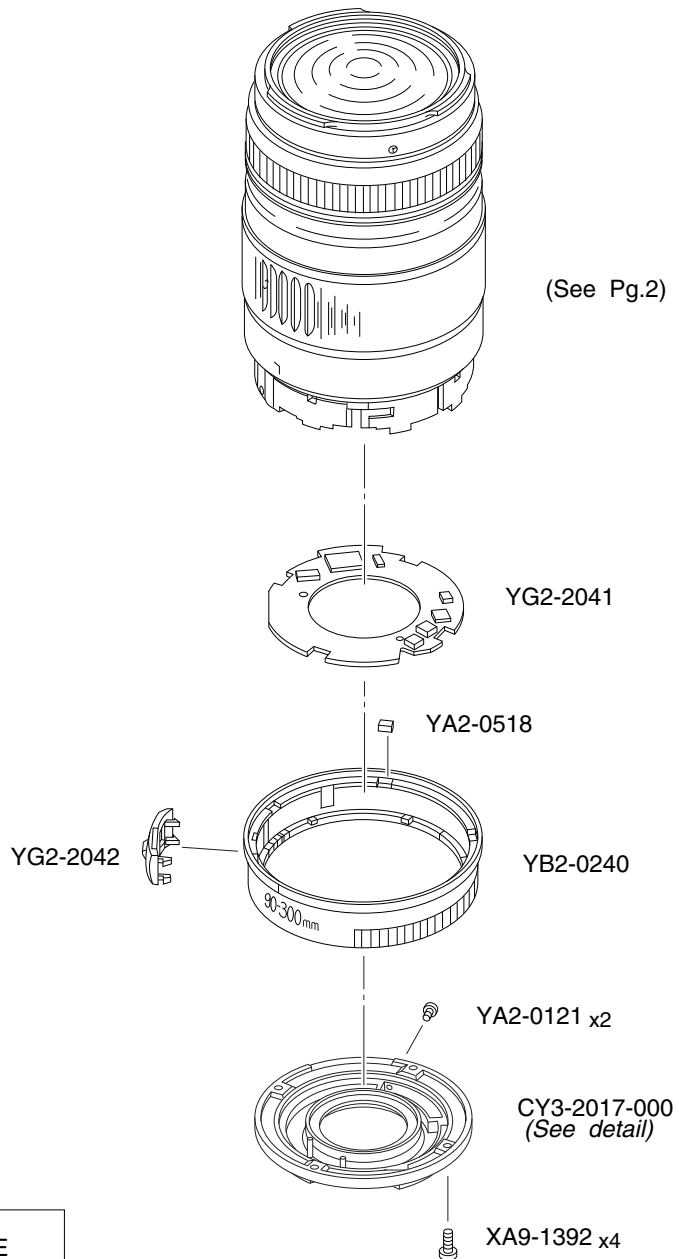
**Canon**

**EF 90-300mm 1:4.5-5.6 USM**

**REF.NO.C21-0161**

**PARTS  
CATALOG**

# CANON LENS EF90-300mm 1:4-5.6 USM



CY3-2017-000(XXX) detail

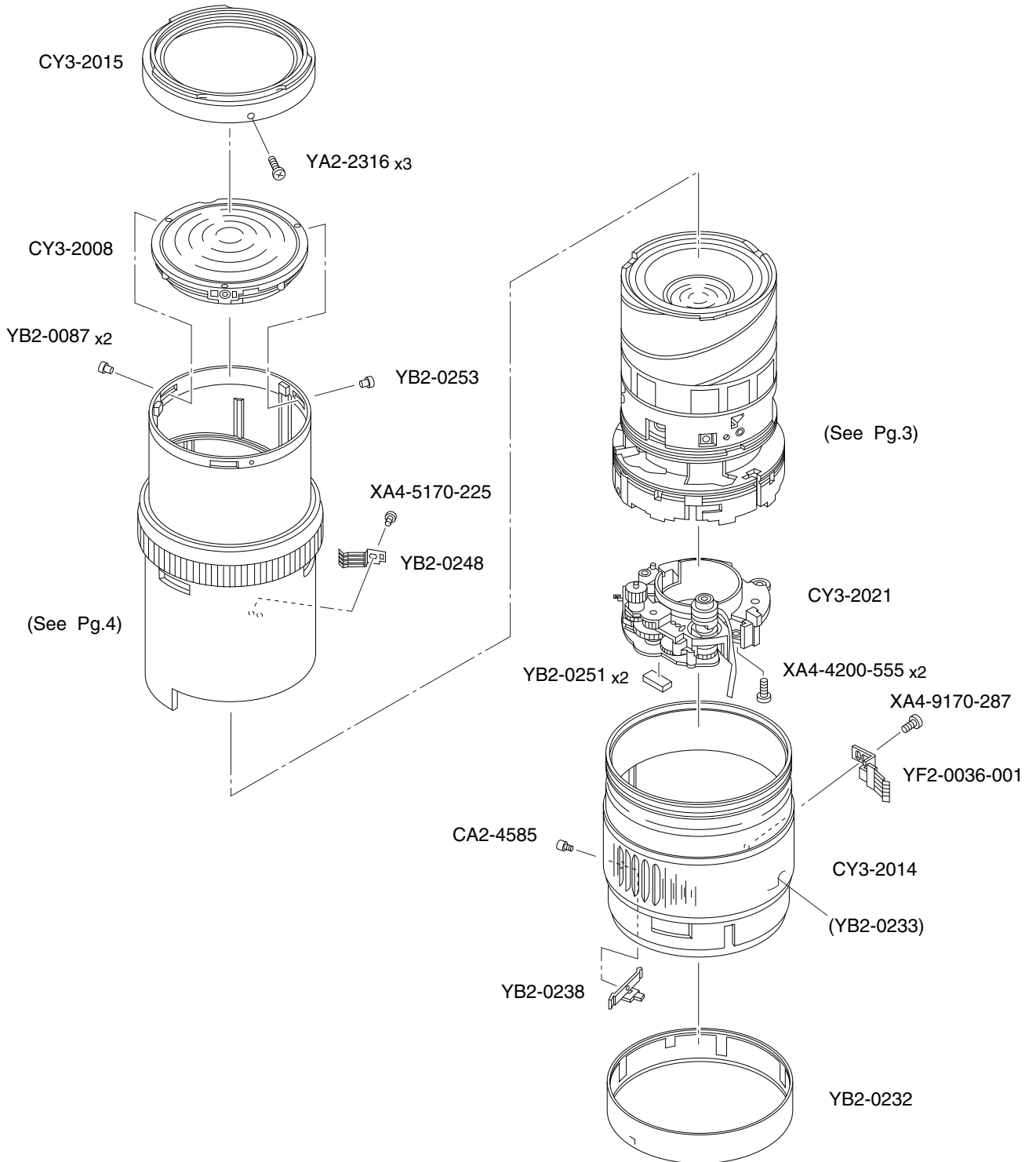
| A       | SIZE  |
|---------|-------|
| 2.10 mm | (210) |
| 2.30 mm | (230) |
| 2.50 mm | (250) |
| 2.70 mm | (270) |
| 2.90 mm | (290) |
| 3.10 mm | (310) |
| 3.30 mm | (330) |

# PARTS LIST

REF.No.C21-0161

| NEW | PARTS NO.         | CLASS | QTY | DESCRIPTION           |
|-----|-------------------|-------|-----|-----------------------|
| *   | CY3-2017-000(XXX) | B     | 1   | MOUNT, LENS           |
| *   | XA9-1392-000      | C     | 4   | SCREW                 |
|     | YA2-0121-000      | C     | 2   | SCREW                 |
|     | YA2-0518-000      | C     | 1   | RUBBER, FRICTION      |
| *   | YB2-0240-000      | B     | 1   | RING, INDEX           |
| *   | YG2-2041-000      | B     | 1   | PCB ASS'Y, MAIN (USM) |
| *   | YG2-2042-000      | B     | 1   | SWITCH ASS'Y, A/M     |

# CANON LENS EF90-300mm 1:4-5.6 USM

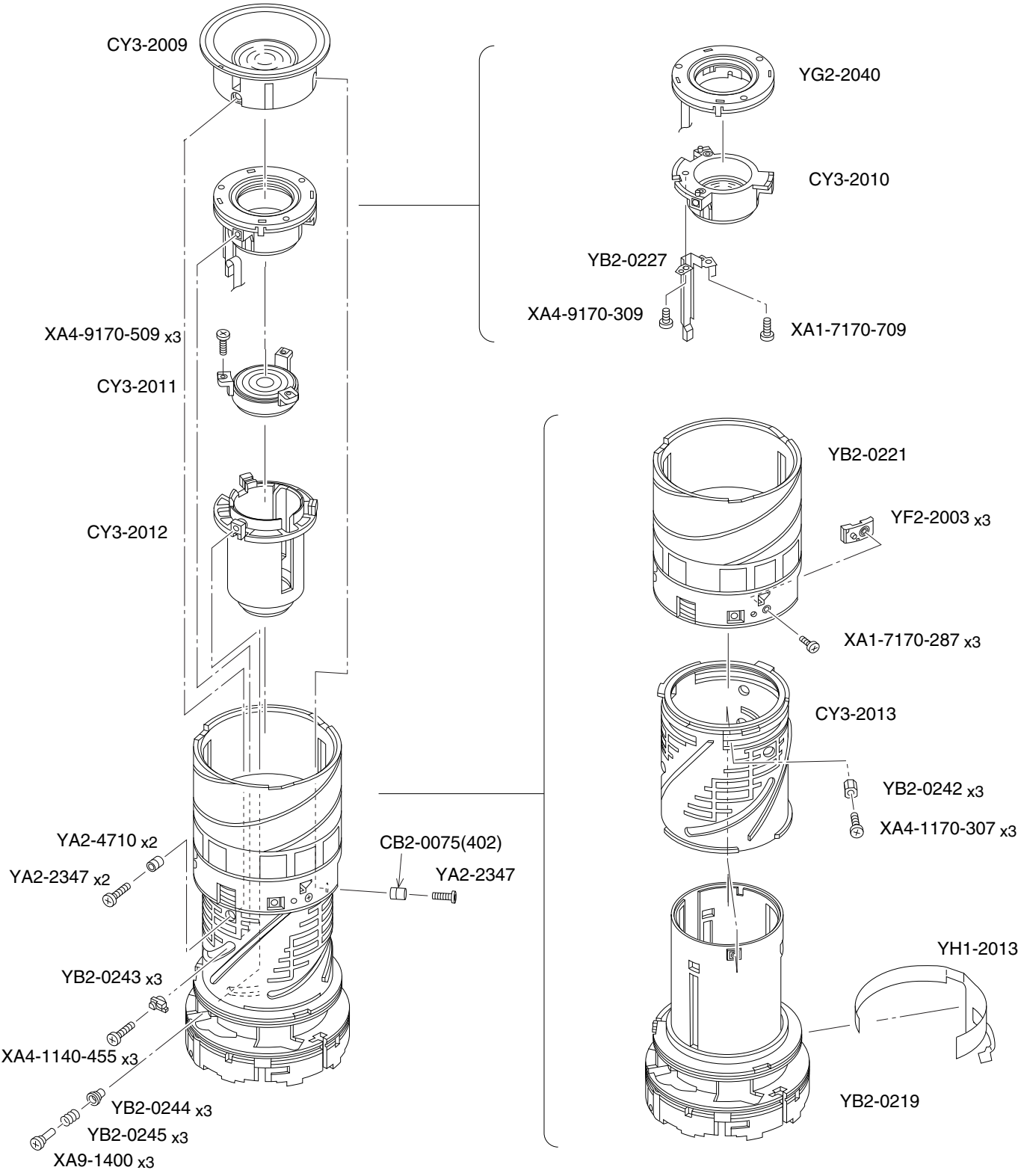


# PARTS LIST

REF.No.C21-0161

| NEW | PARTS NO.    | CLASS | QTY | DESCRIPTION             |
|-----|--------------|-------|-----|-------------------------|
|     | CA2-4585-000 |       | 1   | SCREW, CROSS-RECESS, PH |
| *   | CY3-2008-000 | B     | 1   | LENS ASS'Y, 1ST         |
| *   | CY3-2014-000 | B     | 1   | ZOOM RING ASS'Y (USM)   |
| *   | CY3-2015-000 | B     | 1   | RING, FRONT             |
| *   | CY3-2021-000 | B     | 1   | FOCUSING UNIT (USM)     |
|     | XA4-4200-555 |       | 2   | SCREW, CROSS-RECESS, PH |
|     | XA4-5170-225 |       | 1   | SCREW, CROSS-RECESS, PH |
|     | XA4-9170-287 |       | 1   | SCREW, CROSS-RECESS, PH |
|     | YA2-2316-000 | C     | 3   | SCREW, CROSS-RECESS, PH |
|     | YB2-0087-000 | C     | 2   | PIN, ADJUSTING          |
| *   | YB2-0232-000 | B     | 1   | RING, ZOOMING SCALE     |
| *   | YB2-0233-000 | C     | 1   | RING, RUBBER            |
| *   | YB2-0238-000 | C     | 1   | PLATE, ZOOM COUPLING    |
| *   | YB2-0248-000 | C     | 1   | BRUSH, FOCUSING         |
| *   | YB2-0251-000 | C     | 2   | SHEET, RUBBER           |
| *   | YB2-0253-000 | C     | 1   | PIN                     |
|     | YF2-0036-001 | C     | 1   | BRUSH, ZOOMING          |

# CANON LENS EF90-300mm 1:4-5.6 USM



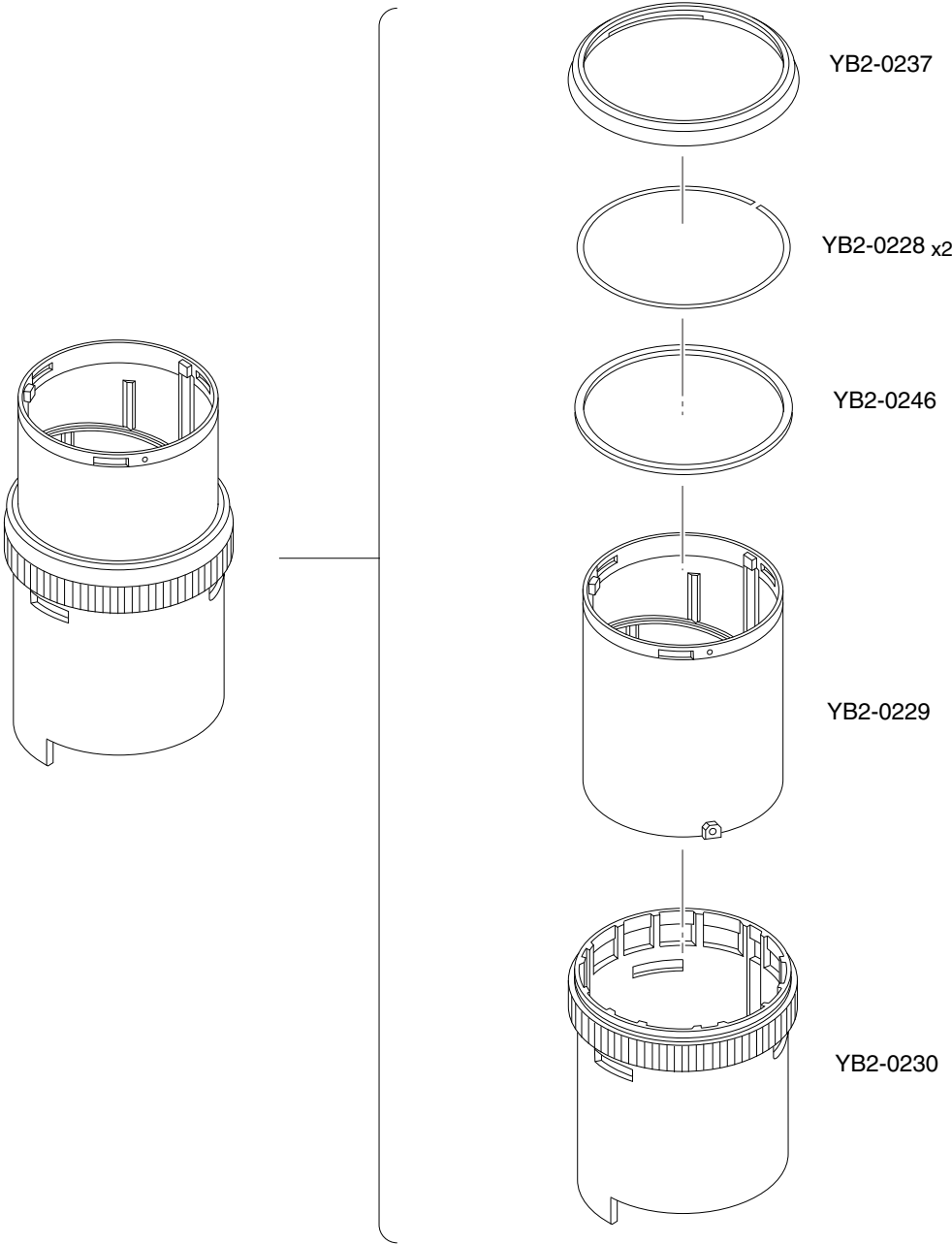


# PARTS LIST

REF.No.C21-0161

| NEW | PARTS NO.         | CLASS | QTY | DESCRIPTION             |
|-----|-------------------|-------|-----|-------------------------|
|     | CB2-0075-000(402) | D     | 1   | COLLAR                  |
| *   | CY3-2009-000      | C     | 1   | LENS ASS'Y, 2ND         |
| *   | CY3-2010-000      | C     | 1   | LENS ASS'Y, 3RD         |
| *   | CY3-2011-000      | C     | 1   | LENS ASS'Y, 4TH         |
| *   | CY3-2012-000      | C     | 1   | LENS ASS'Y, 5TH         |
| *   | CY3-2013-000      | B     | 1   | BARREL, ZOOMING CAM     |
|     | XA1-7170-709      |       | 1   | SCREW, CROSS-RECESS, PH |
|     | XA4-1140-455      |       | 3   | SCREW, CROSS-RECESS, PH |
|     | XA4-1170-307      |       | 3   | SCREW, CROSS-RECESS, PH |
|     | XA4-9170-287      |       | 3   | SCREW, CROSS-RECESS, PH |
|     | XA4-9170-309      |       | 1   | SCREW, CROSS-RECESS, PH |
|     | XA4-9170-509      |       | 3   | SCREW, CROSS-RECESS, PH |
| *   | XA9-1400-000      | C     | 3   | PIN                     |
|     | YA2-2347-000      | C     | 3   | SCREW, CROSS-RECESS, PH |
|     | YA2-4710-000      | C     | 2   | COLLAR                  |
| *   | YB2-0219-000      | C     | 1   | BARREL, FIXED           |
| *   | YB2-0221-000      | C     | 1   | BARREL, STRAIGHT        |
| *   | YB2-0227-000      | C     | 1   | HOLDER, EMD-FLX         |
| *   | YB2-0242-000      | C     | 3   | COLLAR, GUIDE           |
| *   | YB2-0243-000      | C     | 3   | COLLAR                  |
| *   | YB2-0244-000      | C     | 3   | COLLAR, TAPER           |
| *   | YB2-0245-000      | C     | 3   | SPRING, COIL            |
| *   | YF2-2003-000      | C     | 3   | KEY                     |
| *   | YG2-2040-000      | B     | 1   | POWER DIAPHRAGM UNIT    |
| *   | YH1-2013-000      | C     | 1   | FPC, ZOOM               |

# CANON LENS EF90-300mm 1:4.5-5.6 USM



# PARTS LIST

REF.No.C21-0161

| NEW | PARTS NO.    | CLASS | QTY | DESCRIPTION            |
|-----|--------------|-------|-----|------------------------|
| *   | YB2-0228-000 | C     | 2   | WASHER, DUST SHIELD    |
| *   | YB2-0229-000 | C     | 1   | BARREL, OUTER HELICOID |
| *   | YB2-0230-000 | C     | 1   | RING, FOCUSING         |
| *   | YB2-0237-000 | C     | 1   | RING, NAME (USM)       |
| *   | YB2-0246-000 | C     | 1   | RING, REINFORCEMENT    |

CANON LENS EF90-300mm 1:4.5-5.6 USM

