

Vivitar®

Illustrated Parts List



Series 1 Lens
200mm f/3.0

HOW TO USE THIS PUBLICATION

I. CAUTIONS

This publication is intended for use by persons having the skills and equipment needed to service the subject product(s) safely and correctly. Users are cautioned that special tools and/or test equipment may be required for proper disassembly, reassembly, alignment or adjustment of the product.

SPECIAL CAUTION FOR ELECTRICAL PRODUCTS

If the product herein described is electrically operated, its servicing will require extreme caution. Improper handling could result in serious or fatal personal injury or damage to the product.

II. HOW TO FIND PART ORDER NUMBERS

Parts are illustrated on "exploded" drawings where each part is identified by a reference number (having three digits or fewer) or a designator. These reference numbers appear in numerical order in the parts lists (designators appear alphabetically), where they are cross-referenced to part order numbers and descriptions.

When the initials N.A.S. appear in the "Part Number" column, that part is Not Available Separately, and can be obtained only by ordering the assembly containing it. The part number of that assembly may be shown immediately to the right on the same line, in an "Included in Assembly" column, or at the end of the parts list(s).

In parts lists for optical products, quantities of each item are listed as used in the different mounts. The mounts are referred as:

U = Vivitar-Universal Thread Mount	C = Canon FL/FD Series Mount
N = Nikon F, Nikkormat Series Mount	K = Konica Autoreflex Series Mount
M = Minolta SRT/SR Series Mount	O = Olympus OM Series Mount

Note that some parts are common to more than one mount. This commonality is shown in the parts lists so that service centers desiring to stock replacement parts can order economically.

III. HOW TO ORDER PARTS

Please furnish the model number and serial number of the product for which parts are being ordered. For each part requested, please supply part order number, description, and required quantity.

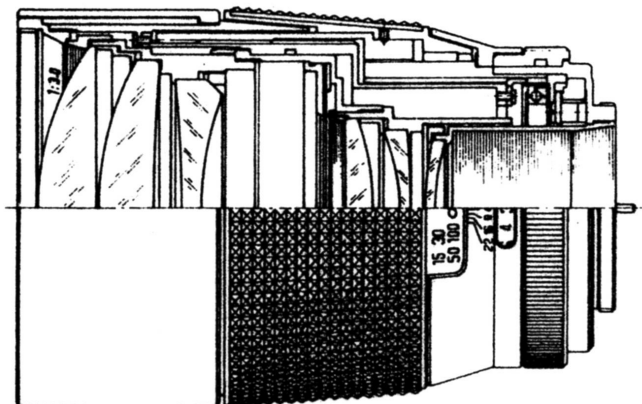
Mail or phone parts orders to:

**Vivitar Central Parts Service
2700 Pennsylvania Avenue
Santa Monica, California 90406**

**Telephone: (213) 829-3672
or (213) 870-0181**

PARTS MANUAL
VIVITAR SERIES 1 200MM F/3.0
AUTOMATIC TELEPHOTO LENSES

GENERAL SPECIFICATIONS



One of the fastest automatic 200mm lenses available, the Series 1 200mm f3.0 employs a uniquely positioned rear compensating element to automatically correct aberrations at all points from the closest focusing distance to infinity. The 4X magnification over a normal lens combined with the large aperture make it an unusually desirable lens for true telephotography, and its compact design is ideal for sports and wild life subjects. Because of its unique optical design, high resolution and contrast are consistent throughout the focusing range from 4 feet to infinity.

Optical Specifications

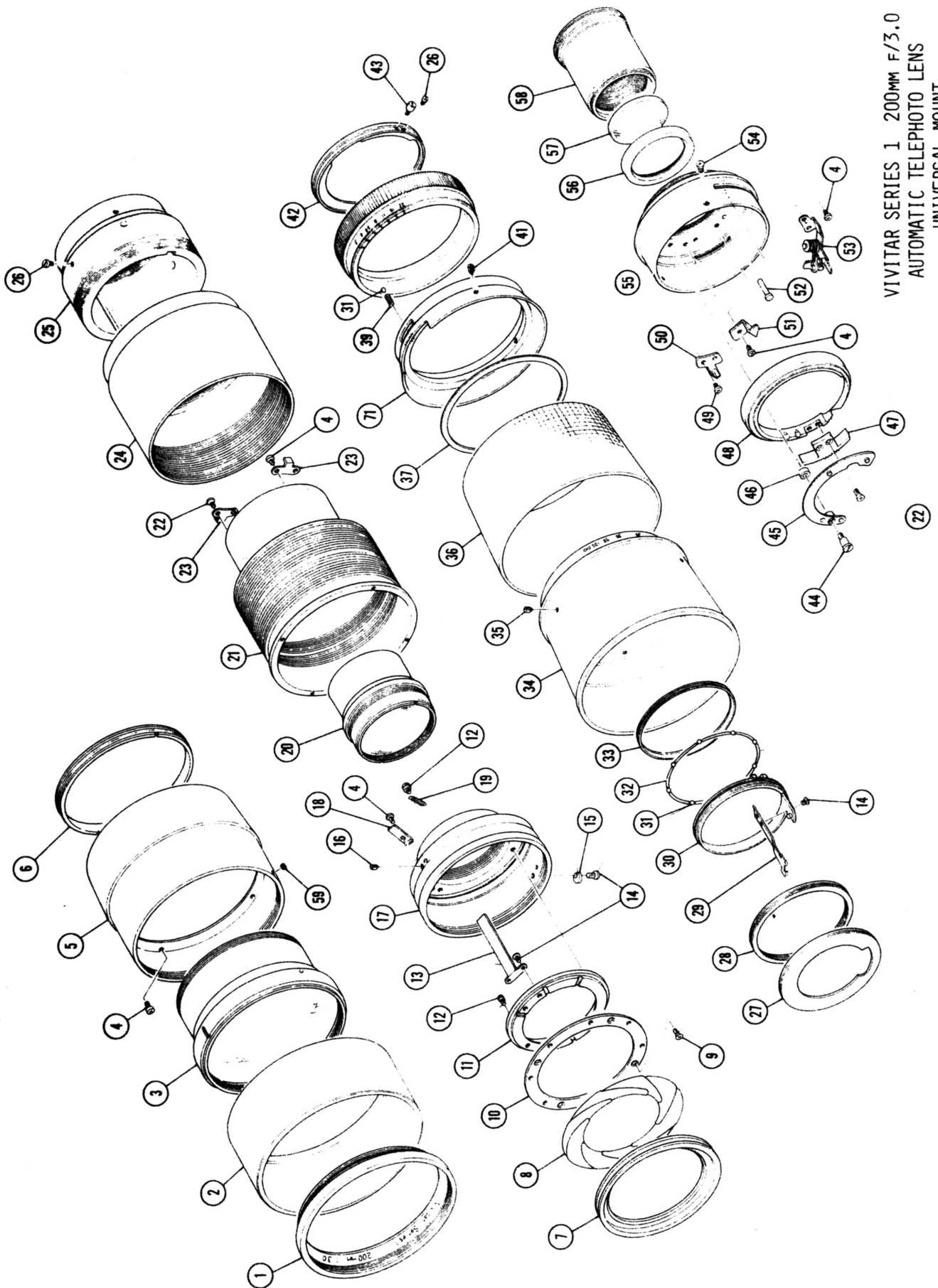
Construction: 6 elements, 6 groups
Effective focal length: 200mm
Back focal length: 77.8mm
Angle of acceptance: 12 degrees
Minimum focus distance: 4' from focal plane
3'4.7" from front element
Max. magnification 1:4 normal size

Mechanical Specifications

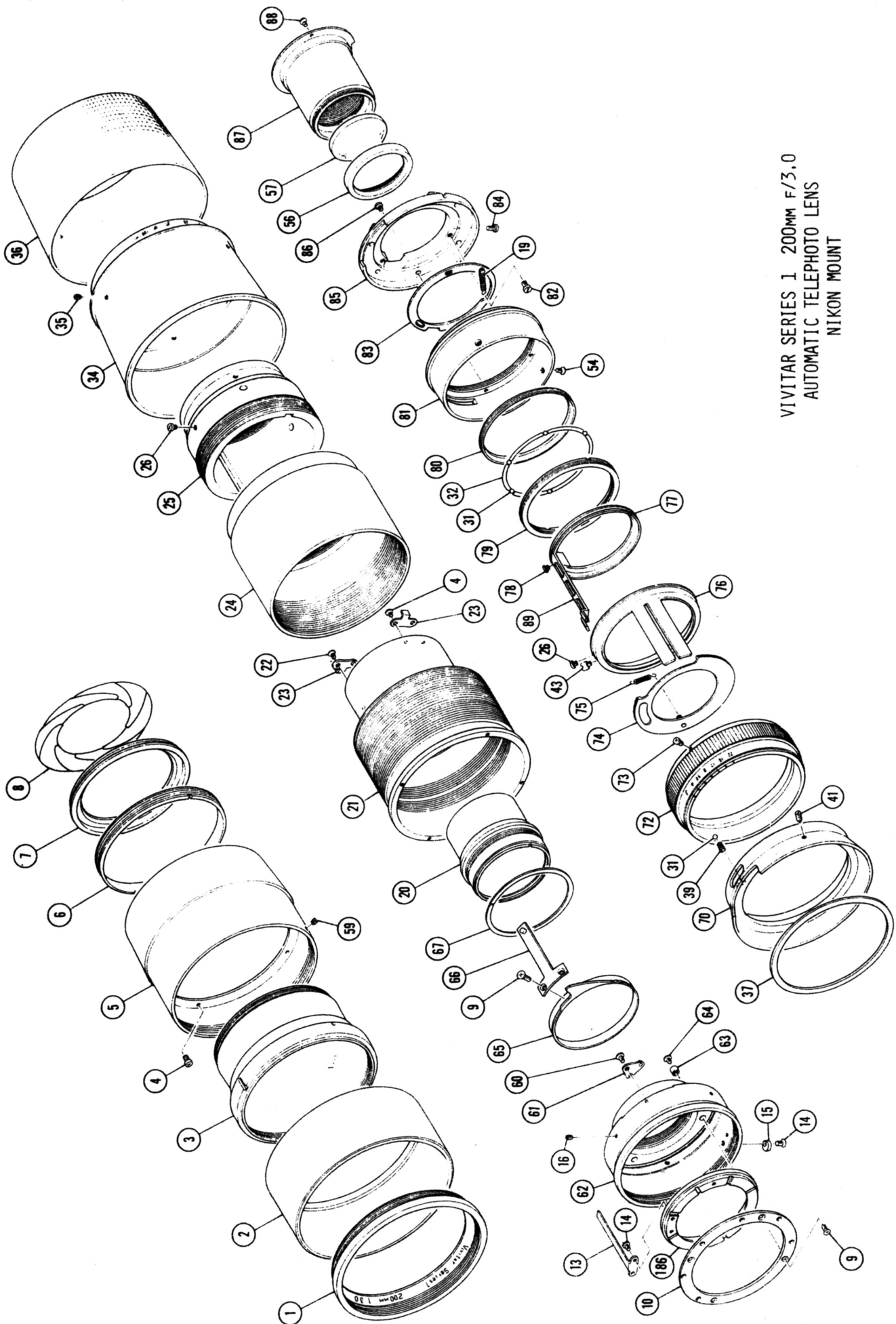
Accessory size: 72mm
Weight: 27 ounces
Overall length: 4.7 inches
Track length: 1.18 inches
Maximum barrel diameter: 3 1/8 inches
Aperture range: f3.0 — f22
f3.0 — f16*
Lens hood: Built-in, retractable

*EE coupled lenses only

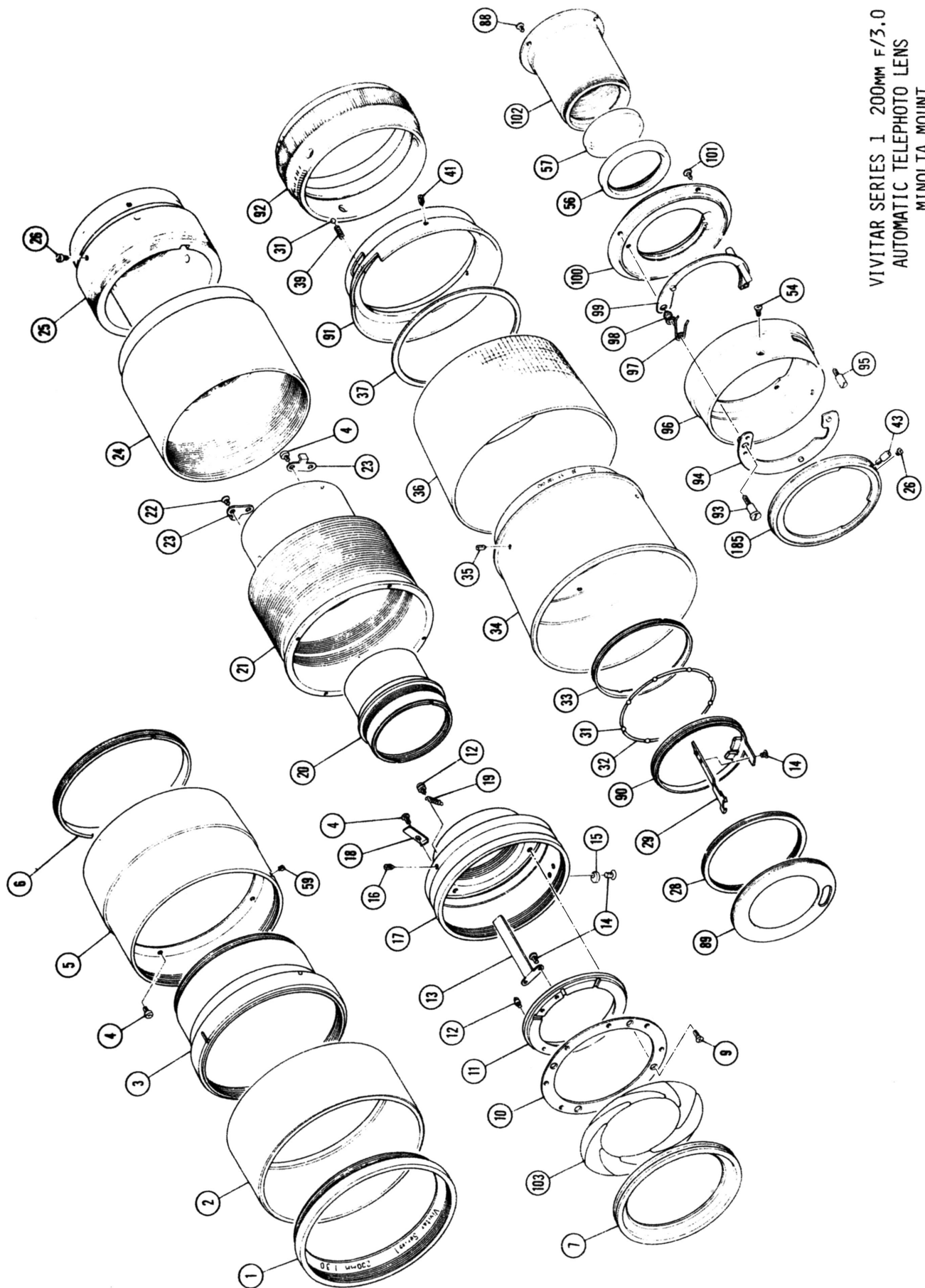
Product specifications are subject to change without notice.

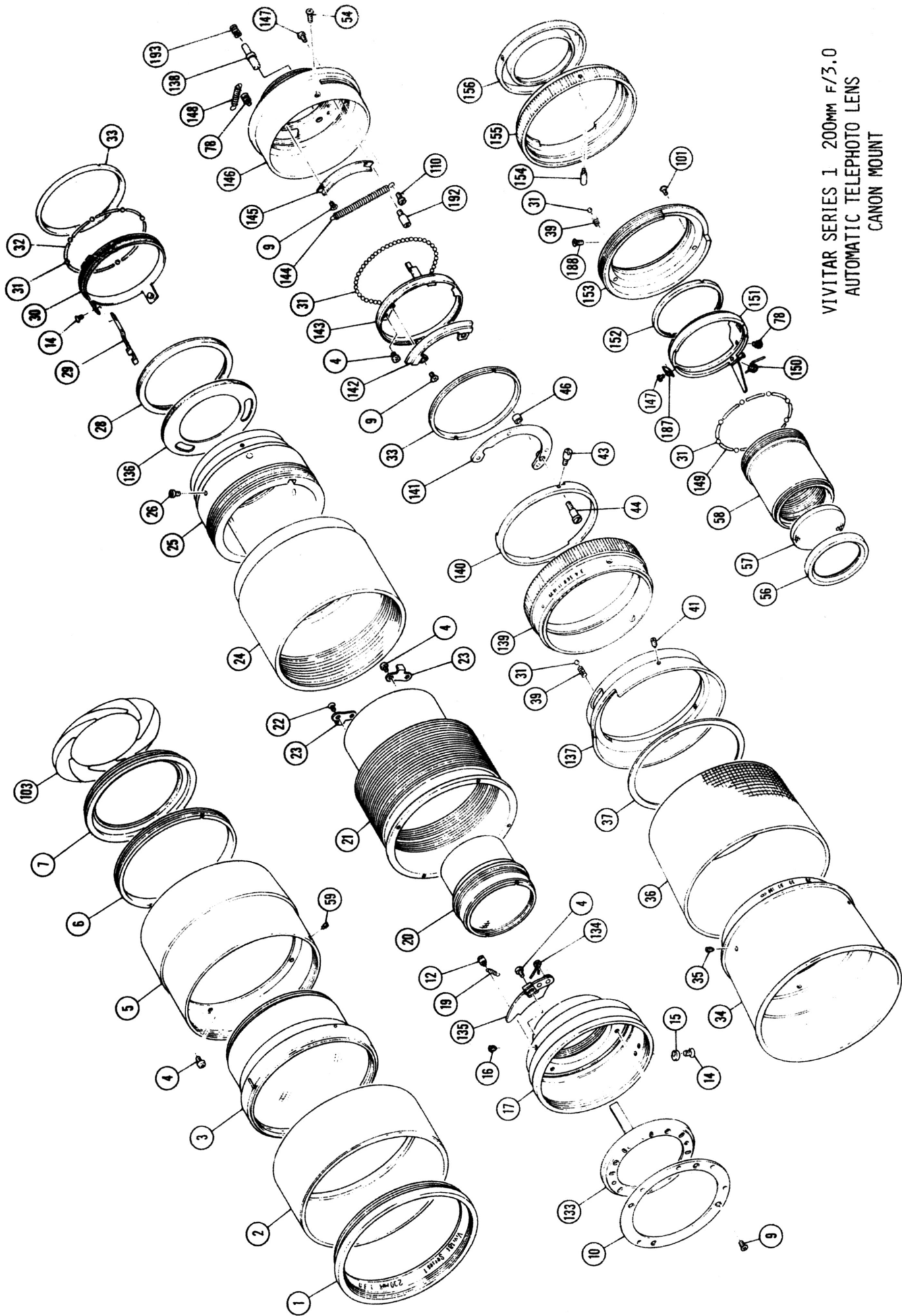


VIVITAR SERIES 1 200MM F/3.0
AUTOMATIC TELEPHOTO LENS
UNIVERSAL MOUNT



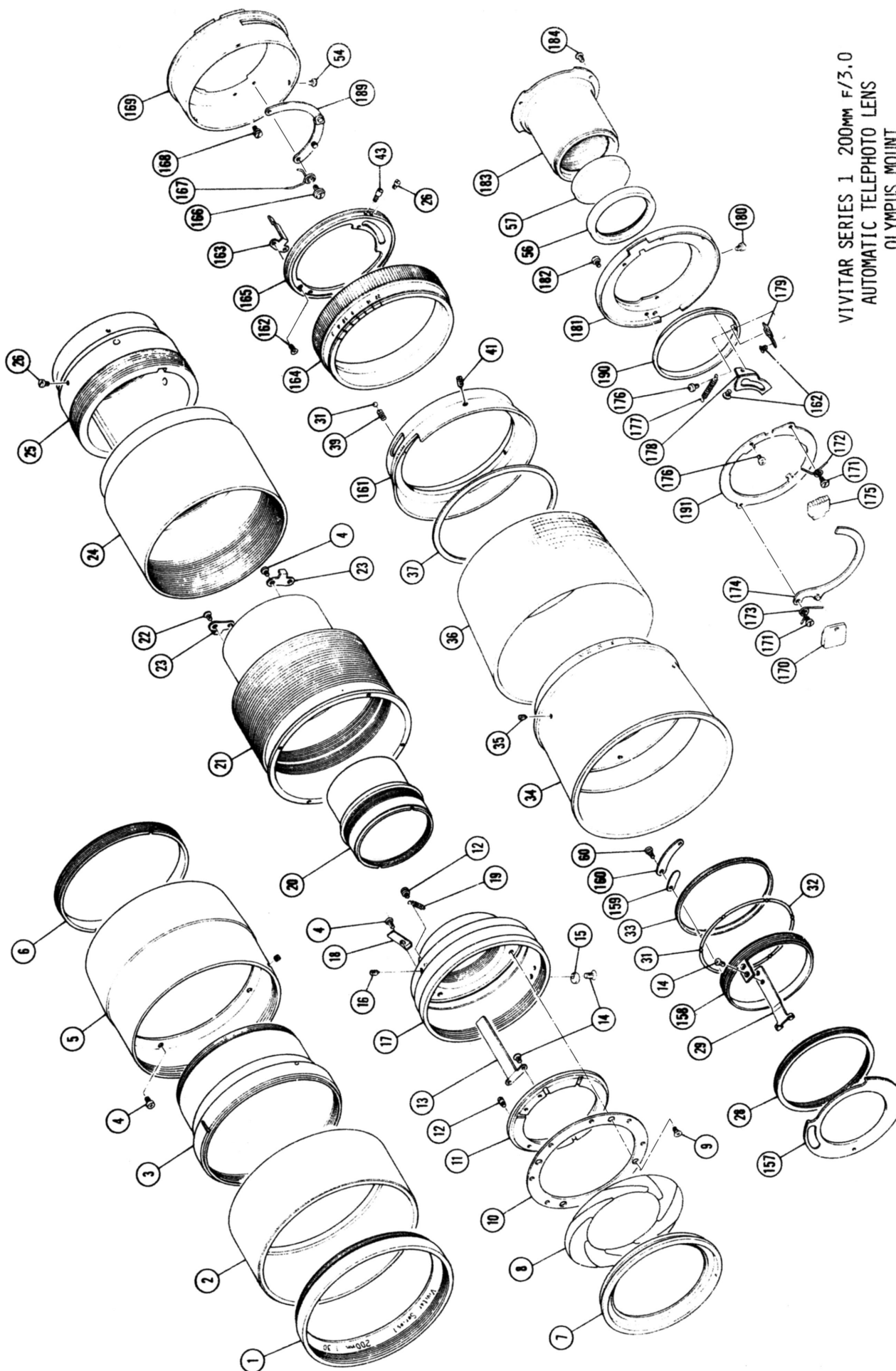
VIVITAR SERIES 1 200MM F/3.0
AUTOMATIC TELEPHOTO LENS
NIKON MOUNT





VIVITAR SERIES 1 200MM F/3.0
AUTOMATIC TELEPHOTO LENS
CANON MOUNT

VIVITAR SERIES 1 200MM F/3.0
AUTOMATIC TELEPHOTO LENS
OLYMPUS MOUNT



PARTS LIST
VIVITAR SERIES 1 AUTOMATIC TELEPHOTO LENS
200MM F/3.0

REFERENCE	DESCRIPTION	PART NUMBER	MOUNT & QUANTITY					
			U	N	M	K	C	O
1	RING, NAME	513200	1	1	1	1	1	1
2	HOOD	513201	1	1	1	1	1	1
3	LENS ASSEMBLY, 1st, 2nd, 3rd	513202	1	1	1	1	1	1
4	SCREW	513012	10	6	7	6	8	7
5	RING, FRONT	513203	1	1	1	1	1	1
6	RING, RETAINER	513015	1	1	1	1	1	1
7	RING, BLADE RETAINER	513204	1	1	1	1	1	1
8	BLADE, DIAPHRAGM (SET)	513017	8	8				8
9	SCREW	513019	4	6	4	8	8	4
10	WASHER, DIAPHRAGM BLADE	513020	1	1	1	1	1	1
11	RING, DIAPHRAGM BLADE OPERATING	513206	1		1			1
12	SCREW, SPRING HOOK	513044	2		2	2	1	2
13	LEVER, OPERATING RING	513207	1	1	1			1
14	SCREW, FLAT HEAD	513042	5	3	5	3	3	5
15	CAM, DIAPHRAGM ADJUST	513045	1	1	1	1	1	
16	SETSCREW	513023	3	3	3	3	3	3
17	HOUSING, DIAPHRAGM	513022	1		1		1	1
18	PLATE, STOP	513208	1		1			1
19	SPRING, DIAPHRAGM	513043	1	1	1	1	1	1
20	LENS ASSEMBLY, 4th, 5th	513209	1	1	1	1	1	1
21	HELICOID, FIRST	513210	1	1	1	1	1	1
22	SCREW	513028	4	2	2	2	2	2
23	GUIDE, HELICOID	513027	2	2	2	2	2	
24	HELICOID, SECOND	513211	1	1	1	1	1	1
25	HELICOID, THIRD	513212	1	1	1	1	1	1
26	SCREW, STOP	513031	2	2	2	1	1	2
27	RING, BAFFLE	513213	1					
28	RING, BALL RECEPTACLE	513033	1		1	1	1	1
29	LEVER, OPERATING	513214	1		1		1	1
30	RING, DIAPHRAGM OPERATING	513035	1					
31	BALL, 1.5 ϕ STEEL	513041	7	7	7	90	104	7
32	SPACER	513036	6	6	6	6	6	6
33	RING, BALL HOLDER	513037	1		1	1	1	1
34	RING, FOCUSING	513215	1	1	1	1	1	1
35	SETSCREW	513039	3	3	3	3	3	3
36	GRIP, FOCUSING	513216	1	1	1	1	1	1
37	WASHER	513046	1	1	1	1	1	1
38	RING, DEPTH OF FIELD	513217	1					
39	SPRING, DETENT	513048	1	1	1	2	2	1
40	RING, DIAPHRAGM	513218	1					
41	SETSCREW	513067	3	3	3	3	3	3
42	RING, CAM	513219	1					

PARTS LIST
VIVITAR SERIES 1 AUTOMATIC TELEPHOTO LENS
200MM F/3.0

REFERENCE	DESCRIPTION	PART NUMBER	MOUNT & QUANTITY					
			U	N	M	K	C	O
43	SCREW, CAM OPERATION	513066	1	1	1		1	1
44	SCREW, SHAFT	513051	1				1	
45	LEVER, DIAPHRAGM OPERATING	513052	1					
46	WASHER, CONTROL METAL SHAFT	513053	1				1	
47	LEVER, MANUAL DIAPHRAGM	513065	1					
48	RING, MANUAL DIAPHRAGM	513054	1					
49	SCREW, FLAT HEAD	513055	2					
50	SPRING, DETENT	513056	1					
51	PLATE, STOP	513057	1					
52	PIN, DIAPHRAGM OPERATING	513064	1					
53	CRANK ASSEMBLY, DIAPHRAGM	513063	1					
54	SCREW	513062	3	3	3	3	3	3
55	FRAME, PENTAX MOUNT	513058	1					
56	HOLDER, 6th LENS	513220	1					
57	ELEMENT, 6th LENS	513221	1					
58	HOUSING, 6th LENS	513222	1			1	1	
59	SETSCREW	513223	1	1	1	1	1	1
60	SHAFT, SECTOR	513071	1		1		1	
61	PLATE, SECTOR (SET)	513070		1		1		
62	HOUSING, DIAPHRAGM	513069		1				
63	NUT, ROUND	513072		4		4		
64	SCREW, FLAT	513073		4		4		
65	RING, CAM	513224		1				
66	LEVER, CAM	513225		1				
67	RING, SETTING	513076		1				
68	RING, FOCUSING	513226	1	1	1	1	1	1
69	GRIP, FOCUSING	513227	1	1	1	1	1	1
70	RING, DEPTH OF FIELD (NIKON)	513228		1				
71	RING, DEPTH OF FIELD (U)	513229	1					
72	RING, DIAPHRAGM (NIKON)	512230		1				
73	SCREW, COUPLER PLATE	513080		1				
74	RING, BAFFLE	513231		1				
75	SPRING	513089		1				
76	RING, CAM OPERATION	513232		1				
77	RING, OPERATING	513233		1				
78	SCREW, SPRING HOOK	513090		1			1	
79	RING, BALL RECEPTACLE	513234		1				
80	RING, BALL HOLDING	513235		1				
81	FRAME, MOUNT (NIKON)	513083		1				
82	SCREW, BUFFER RING	513091		3				
83	RING, BUFFER	513085		1				
84	SCREW, FLAT	513092		1				

PARTS LIST
VIVITAR SERIES 1 AUTOMATIC TELEPHOTO LENS
200MM F/3.0

REFERENCE	DESCRIPTION	PART NUMBER	MOUNT & QUANTITY					
			U	N	M	K	C	O
85	MOUNT, NIKON	513086	1					
86	SCREW, PAN HEAD	513093	5					
87	HOUSING, 6th LENS	513236	1					
88	SCREW, FLAT HEAD	513094	3	3				
89	RING, BAFFLE	513237		1				
90	RING, OPERATING	513095		1				
91	RING, DEPTH OF FIELD	513238		1				
92	RING, DIAPHRAGM	513239		1				
93	SHAFT, CONTROL METAL	513099		1				
94	LEVER, DIAPHRAGM OPERATING	513100		1				
95	SCREW, METAL CONTROL	513106		1				
96	FRAME, MOUNT (MINOLTA)	513101		1				
97	SPRING	513102		1				
98	SPACER, OPERATING LEVER	513103		1				
99	LEVER, OPERATING	513104		1				
100	MOUNT, MINOLTA	513305		1				
101	SCREW, MOUNT	513125		4	4	3		
102	FRAME, 6th LENS	513240		1				
103	BLADE, DIAPHRAGM (SET)	513107		8	8	8		
104	RING, DIAPHRAGM OPERATING	513241			1			
105	SCREW, ROLLER SHAFT	513071			1			
106	HOUSING, DIAPHRAGM	513108			1			
107	SPRING, CROWN WASHER	513185			1			
108	SCREW, CAM STOP	513186			1			
109	SPRING, CROWN WASHER	513187			1			
110	SCREW, SPRING HOOK	513152			1	2		
111	SPRING	513188			1			
112	ROLLER	513111			1			
113	RING, CAM	513242			1			
114	LEVER, CAM	513243			1			
115	RING, BALL HOLDER	513113			1			
116	HELICOID, FIRST	513244			1			
117	RING, DEPTH OF FIELD	513245			1			
118	RING, BAFFLE	513246			1			
119	RING, OPERATING	513247			1			
120	LEVER, OPERATING	513117			1			
121	PIN, CONTROL	513248			1			
122	FRAME, MOUNT	513118			1			
123	SPRING, LOCK	513119			1			
124	LOCK BUTTON	513120			1			
125	RING, DIAPHRAGM	513249			1			
126	RING, BUFFER	513122			1			

PARTS LIST
VIVITAR SERIES 1 AUTOMATIC TELEPHOTO LENS
200MM F/3.0

REFERENCE	DESCRIPTION	PART NUMBER	MOUNT & QUANTITY					
			U	N	M	K	C	O
127	RING, STOPPER	513128					1	
128	SPRING	513043					1	
129	SCREW, STOP RING	513123					1	
130	MOUNT, KONICA	513124					1	
131	RING, COVER	513250					1	
132	SCREW	513189					3	3
133	RING, DIAPHRAGM OPERATING	513251						1
134	SPRING, BUFFER PLATE	513190						1
135	PLATE, BUFFER	513191						1
136	RING, BÄFFLE	513252						1
137	RING, DEPTH OF FIELD	513253						1
138	PIN, DISCRIMINATION	513254						1
139	RING, DIAPHRAGM	513255						1
140	RING, STOP	513256						1
141	LEVER, DIAPHRAGM OPERATING	513134						1
142	PLATE, CAM	513257						1
143	RING, DIAPHRAGM SETTING	513258						1
144	SPRING, CAM	513151						1
145	SPRING, RECEPTACLE	513138						1
146	FRAME, CANON MOUNT	513139						1
147	SCREW, FLAT	513149						2
148	SPRING	513140						1
149	SPACER	513259						7
150	SPRING	513260						1
151	RING, DIAPHRAGM COUPLING	513261						1
152	RING, BALL RETAINER	513143						1
153	MOUNT, CANON	513139						1
154	SCREW, SIGNAL	513147						1
155	RING, LOCKING	513146						1
156	RING, COVER	513262						1
157	RING, BÄFFLE	513263						1
158	RING, OPERATING	513264						1
159	WASHER	513155						1
160	LEVER, OPERATING	513158						1
161	RING, DEPTH OF FIELD	513265						1
162	SCREW, FLAT HEAD	513161						6
163	LEVER, COUPLING	513165						1
164	RING, DIAPHRAGM	513266						1
165	RING, CAM	513267						1
166	SCREW, SHAFT	513163						1
167	SPRING	513164						1
168	SCREW, SPRING HOOK	513166						1

PARTS LIST
VIVITAR SERIES 1 AUTOMATIC TELEPHOTO LENS
200MM F/3.0

REFERENCE	DESCRIPTION	PART NUMBER	MOUNT & QUANTITY					
			U	N	M	K	C	O
169	FRAME, OLYMPUS MOUNT	513168						1
170	BUTTON, MANUAL DIAPHRAGM	513169						1
171	SCREW, SHAFT	513170						1
172	SPRING, LOCK BUTTON	513174						1
173	SPRING, MANUAL DIAPHRAGM	513171						1
174	ACTUATOR, MANUAL DIAPHRAGM	513172						1
175	BUTTON, LOCK	513173						1
176	SCREW	513175						2
177	SPRING	513176						1
178	CAM, DIAPHRAGM	513184						1
179	LEVER, DIAPHRAGM OPERATING	513182						1
180	SCREW, STOP	513181						1
181	MOUNT, OLYMPUS	513178						1
182	SCREW	513179						3
183	HOUSING, 6th LENS	513268						1
184	SCREW	513193						3
185	RING, CAM	513269			1			
186	RING, DIAPHRAGM ACTUATOR	513270		1				
187	HOOK, SPRING	513271					1	
188	SCREW	513189				3	3	
189	LEVER, DIAPHRAGM OPERATING	513167						1
190	RING, DIAPHRAGM OPERATING	513177						1
191	HOLDER, DIAPHRAGM RING	513183						1
192	SPRING	513140					1	



Faithfully restored from a photocopy by:

Prepared by:
Service Engineering Div.,

Vivitar Corporation
Corporate Offices:
1630 Stewart Street, Santa Monica, Ca 90406

Printed in U.S.A.

Vivitar is an International Trademark of Vivitar Corporation