

Vivitar®

Illustrated Parts List



Automatic Fixed Mount Lens
17mm f/3.5

Publication No. 3746108 / March 1979

HOW TO USE THIS PUBLICATION

HOW TO FIND PART ORDER NUMBERS

Parts are illustrated on exploded view drawings where each part is identified by a reference number or designator. These reference numbers appear in sequence in the parts list where they are cross-referenced to the part numbers and descriptions.

When a part is not available separately it can be obtained only by ordering the assembly containing it. The part number of that assembly may be shown immediately to the right on the same line in an "Included in Assembly" column or at the end of the parts list(s), or it may be indicated by footnotes.

In parts lists for lens items, quantities of each item are listed as used in the different lens mounts. The mounts are referred to as:

U	=	Vivitar-Universal Thread Mount	K	=	Konica Autoreflex Series Mounts
N	=	Nikon Mounts	O	=	Olympus OM Series Mount
M	=	Minolta Mounts	P	=	Pentax K Mounts
C	=	Canon Mounts			

Note that many parts are common to more than one mount. This commonality is shown in the complete parts list at the end of the manual, so that service centers desiring to stock replacement parts can order economically.

CAUTION

This publication is intended for use by persons having skills and equipment needed to service the subject product(s) safely and correctly. Users are cautioned that special tools and/or test equipment may be required for proper disassembly, reassembly, alignment or adjustment or damage to the product may result.

NOTE

All dimensions are in millimeters unless otherwise specified.

Notice: Information contained herein is subject to change without notice.

HOW TO ORDER PARTS

Please furnish the model number and serial number of the product for which parts are being ordered. For each part requested, please supply part number, description, and required quantity. Mail or phone parts orders to:

Vivitar Central Parts Service
2700 Pennsylvania Avenue
Santa Monica, California 90406

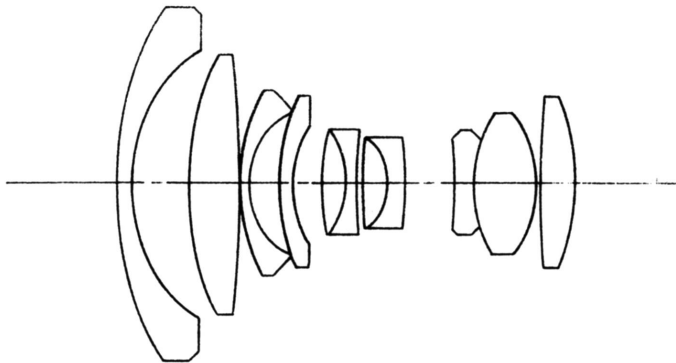
Telephone: (213) 829-3672
or (213) 870-0181

VIVITAR AUTOMATIC FIXED MOUNT LENS
17mm f/3.5

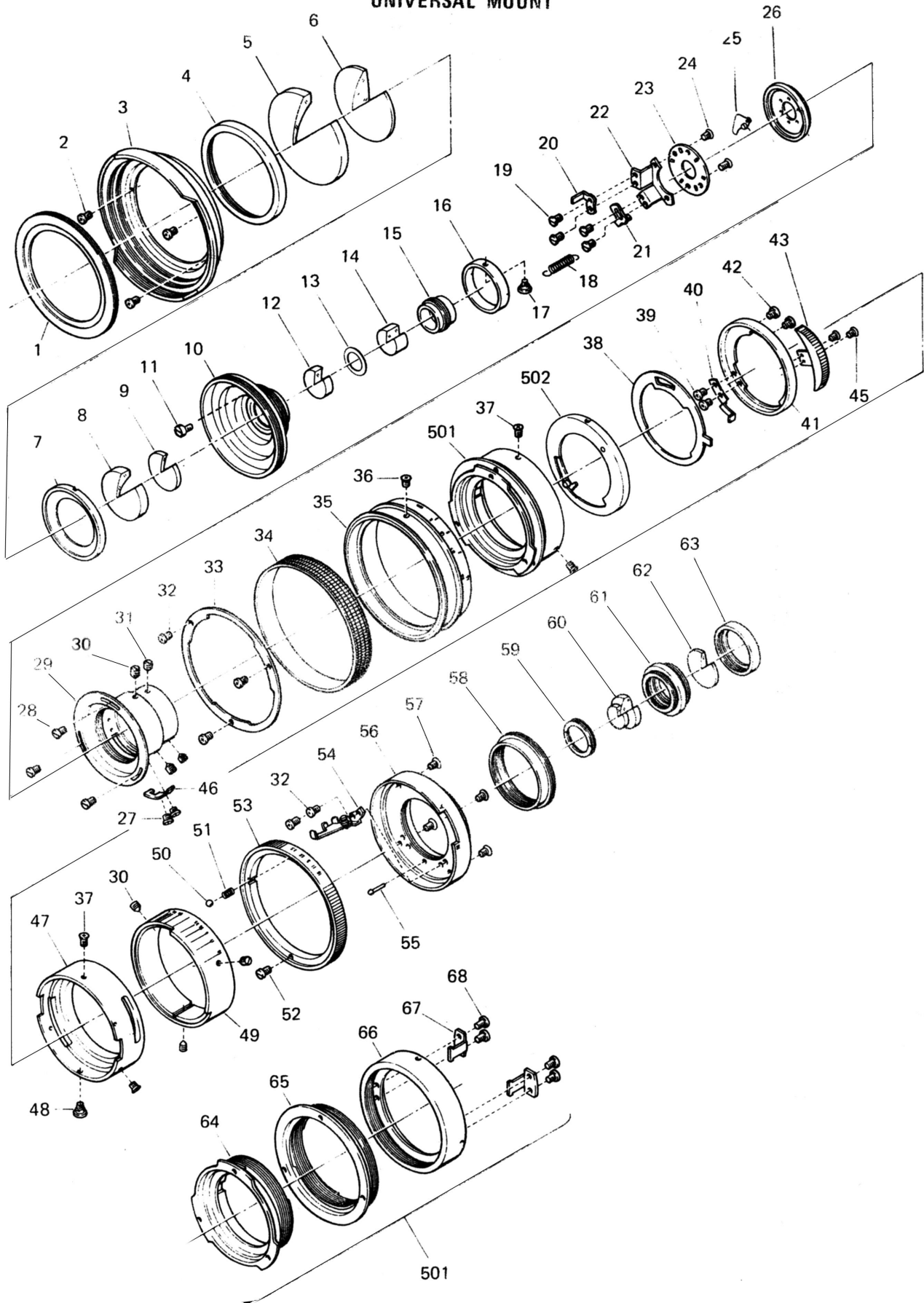
GENERAL SPECIFICATIONS

Optical Construction	11 elements in 8 groups
Angle of Acceptance	104 degrees
Aperture Range	f/3.5 to f/16
Minimum Focusing Distance from Film Plane	22 cm (0.7 ft)
Weight	380 g (13.2 oz)
Maximum Barrel Diameter	56mm
Length at Infinity	80mm
Lens Coating	MC (Multicoating)
Accessory Size	72mm
Lens Cap Size	80mm

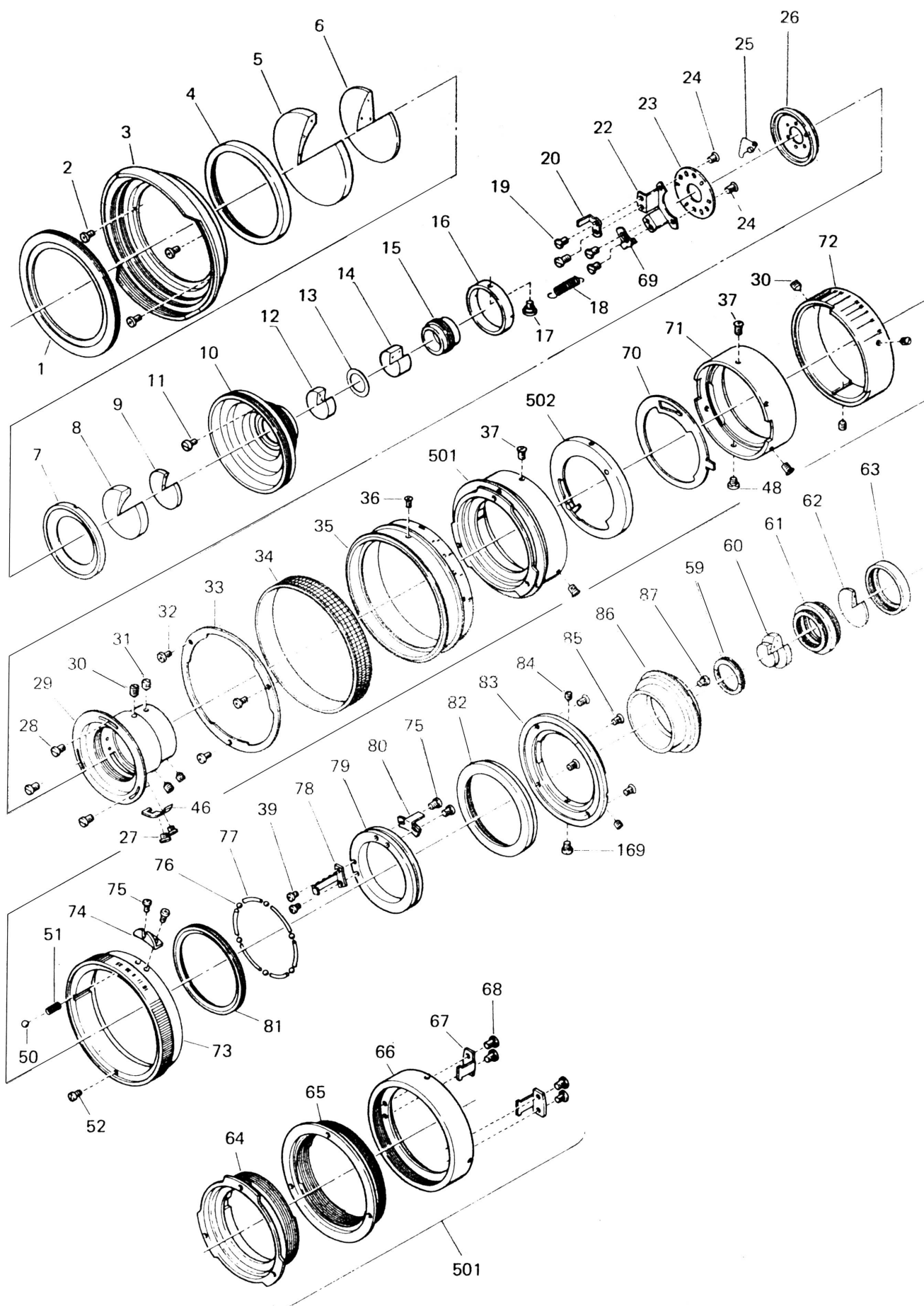
Product specifications are subject to change without notice.



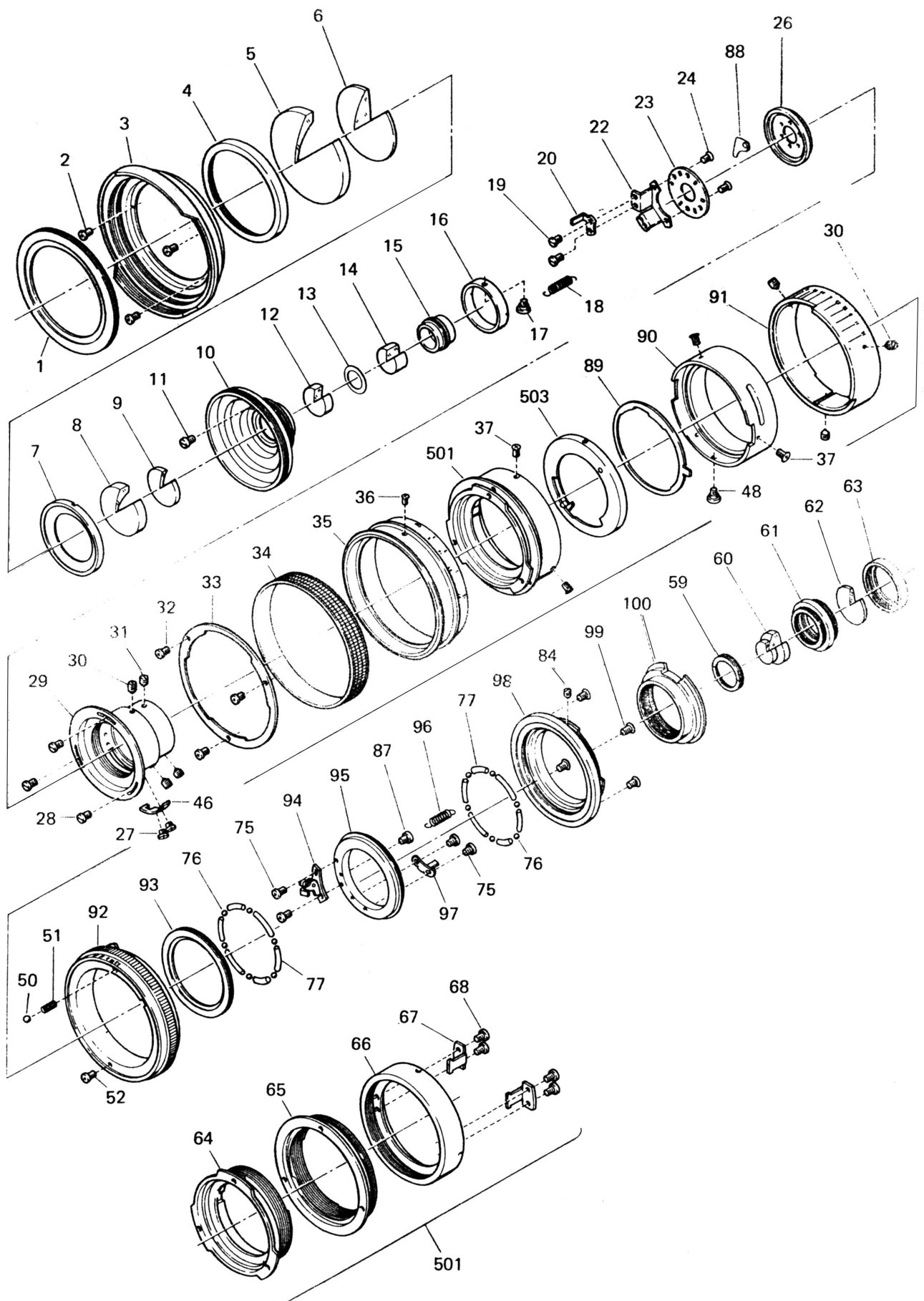
VIVITAR AUTOMATIC FIXED MOUNT LENS
17mm f/3.5
UNIVERSAL MOUNT



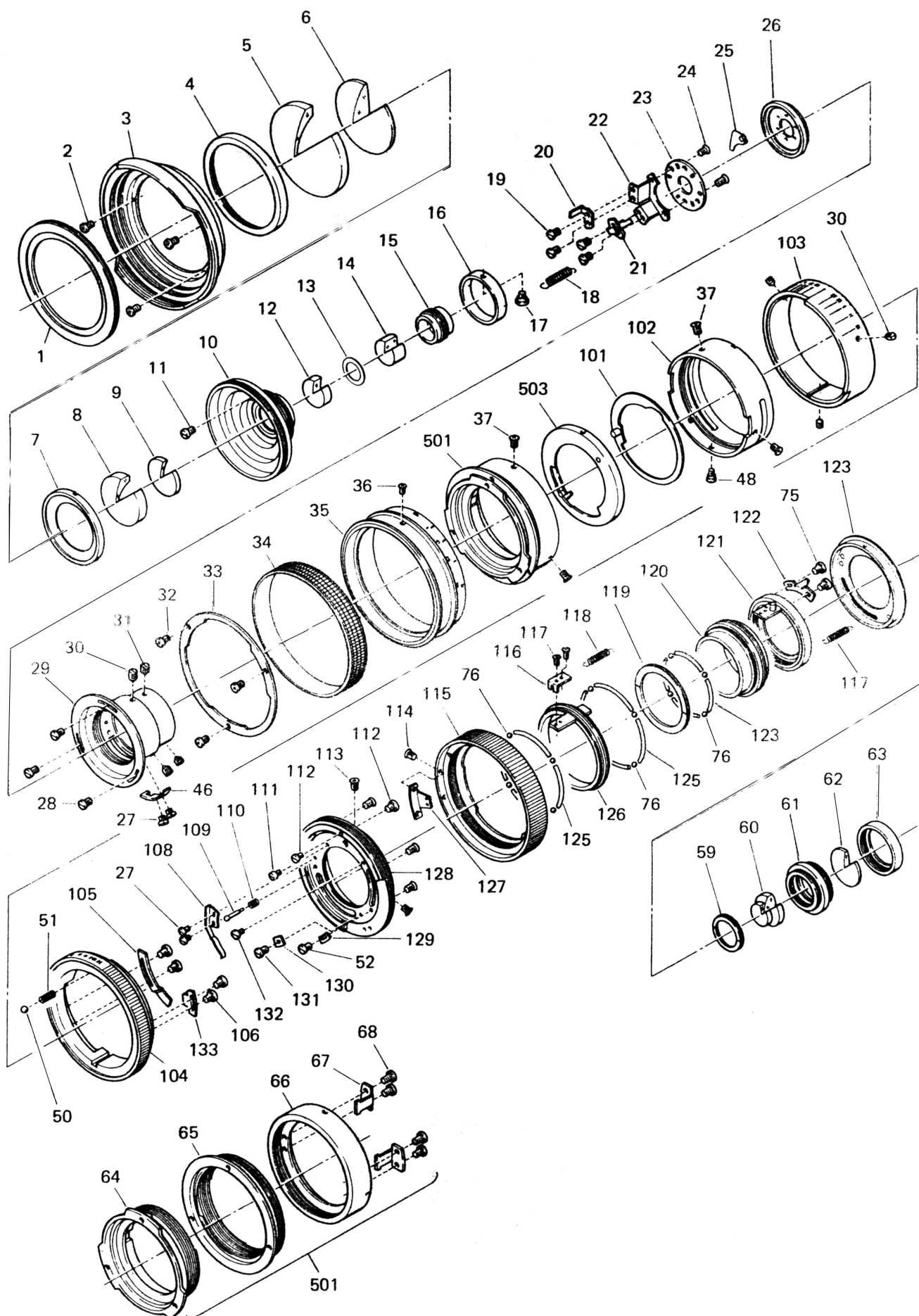
VIVITAR AUTOMATIC FIXED MOUNT LENS
17mm f/3.5
NIKON MOUNT



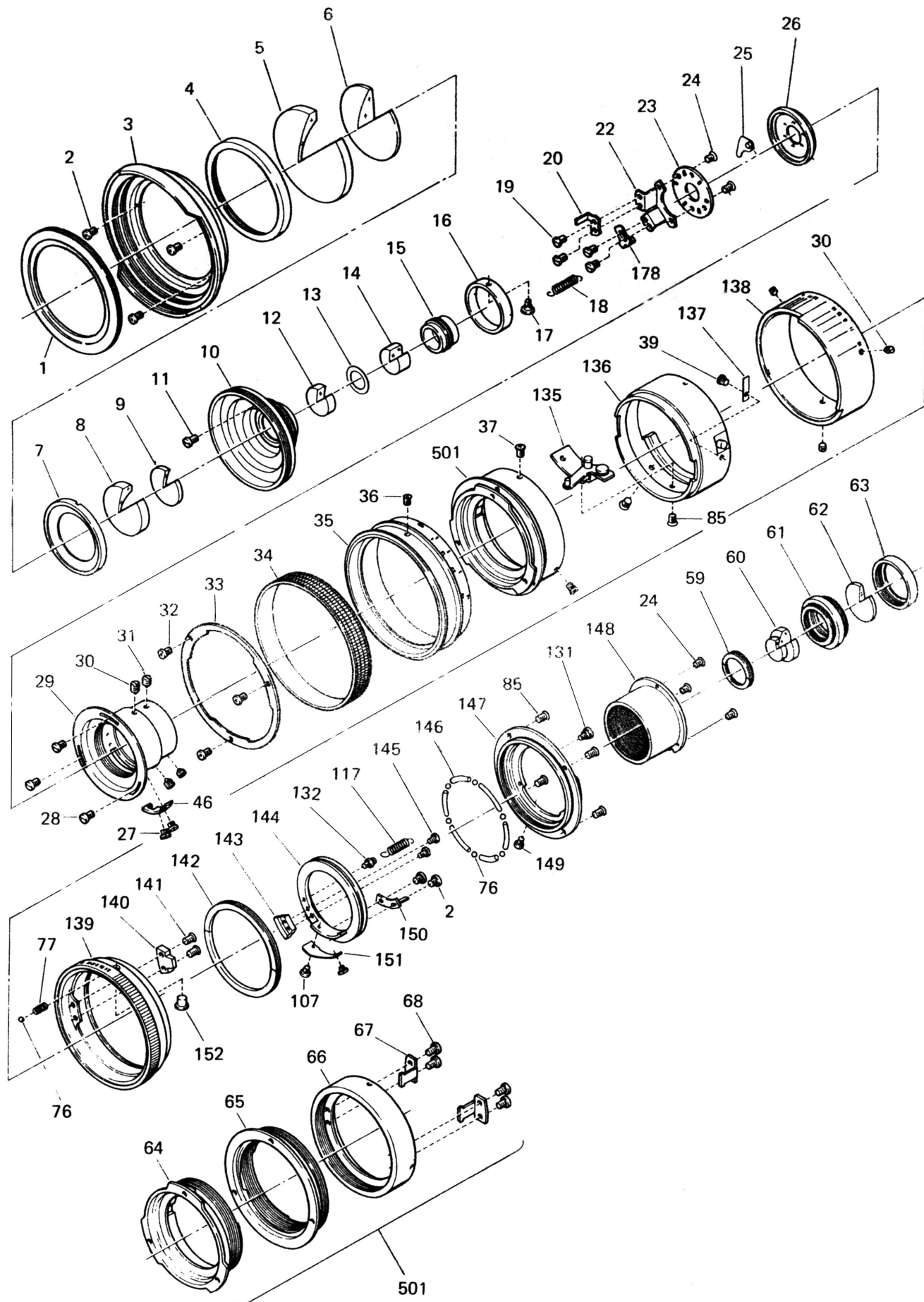
VIVITAR AUTOMATIC FIXED MOUNT LENS
17mm f/3.5
MINOLTA MOUNT



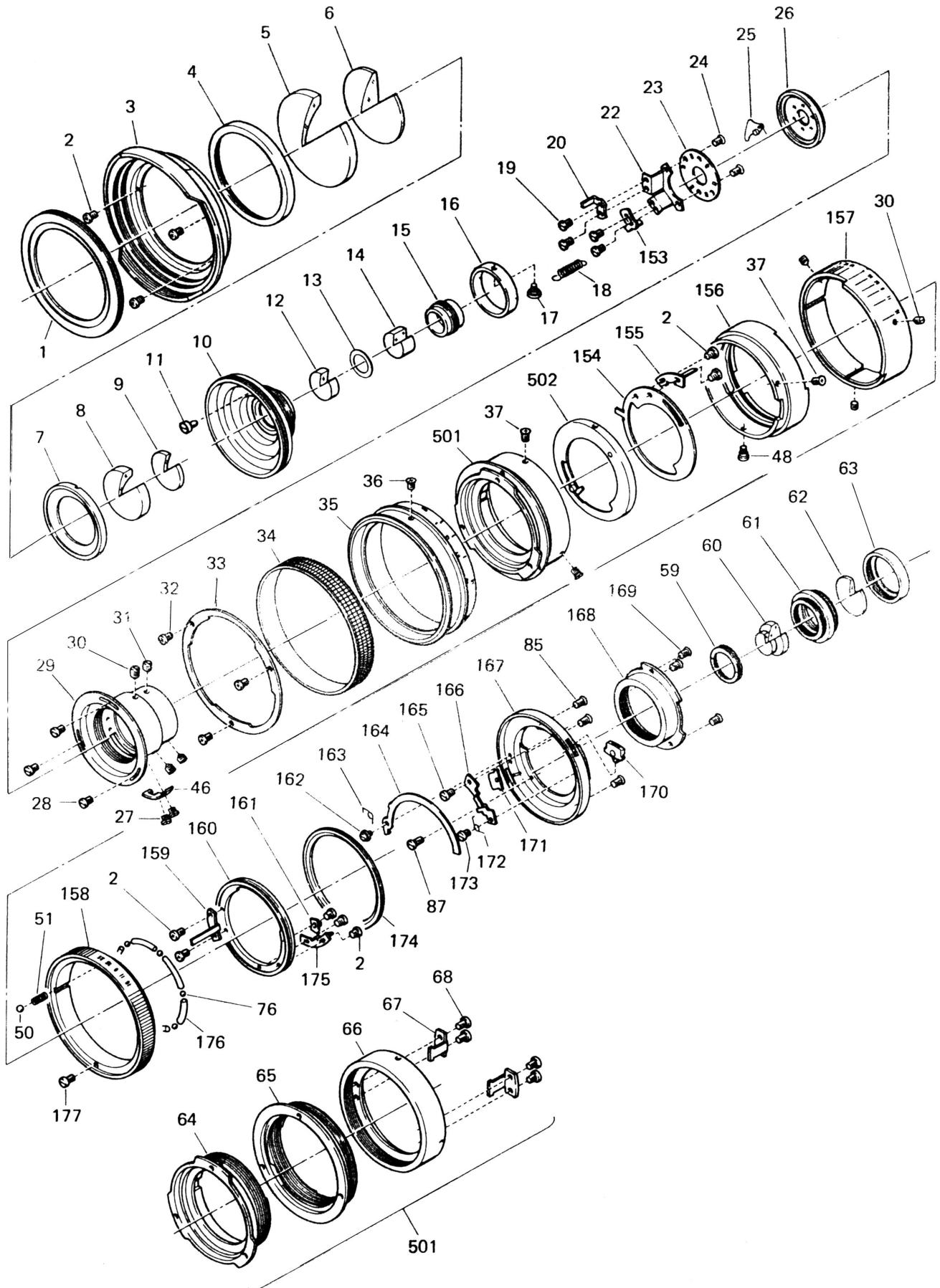
VIVITAR AUTOMATIC FIXED MOUNT LENS
17mm f/3.5
CANON/FD MOUNT



VIVITAR AUTOMATIC FIXED MOUNT LENS
17mm f/3.5
KONICA MOUNT



VIVITAR AUTOMATIC FIXED MOUNT LENS
17mm f/3.5
OLYMPUS/OM MOUNT



VIVITAR AUTOMATIC FIXED MOUNT LENS

17mm f/3.5

COMPLETE PARTS LIST

Ref.	Vivitar Part No.	Description	Part Code	Quantity						
				U	N	M	C	K	O	
1	3101970	RING, NAME	AK17-2	1	1	1	1	1	1	1
2	3512171	SCREW, PNHD, 1.7x2.5, BLK	EDP2.5	3	3	3	3	5	8	
3	3101971	FRAME, FILTER	AK17-1	1	1	1	1	1	1	
4	3101972	RING, RETAINER, 1ST LENS ELEMENT	AK17-5	1	1	1	1	1	1	
5	3101973	LENS ELEMENT, 1ST	AK17-G1	1	1	1	1	1	1	
6	3101974	LENS ELEMENT, 2ND	AK17-G2	1	1	1	1	1	1	
7	3101975	RING, RETAINER, 3RD LENS ELEMENT	AK17-4	1	1	1	1	1	1	
8	3101976	LENS ELEMENT, 3RD	AK17-G3	1	1	1	1	1	1	
9	3101977	LENS ELEMENT, 4TH	AK17-G4	1	1	1	1	1	1	
10	3101978	HOUSING, 1ST LENS GROUP	AK17-3	1	1	1	1	1	1	
11	3512566	SCREW, GUIDE	BD 49	1	1	1	1	1	1	
12	3101979	LENS ELEMENT, 5TH	AK17-G5	1	1	1	1	1	1	
13	3101980	RING, SPACER, 5TH, 6TH ELEMENT	AK17-7	1	1	1	1	1	1	
14	3101981	LENS ELEMENT, 6TH	AK17-G6	1	1	1	1	1	1	
15	3101982	HOUSING, 5TH/6TH LENS ELEMENTS	AK17-6	1	1	1	1	1	1	
16	3101983	RING, DIAPHRAGM RETAINING	AK17-15	1	1	1	1	1	1	
17	3512712	SPRING HOOK	TD 6	1	1	1	1	1	1	
18	3512116	SPRING	S121	1	1	1	1	1	1	
19	3101984	SCREW, RNDHD, 1.4x2.5, BRASS, SLOT	BC2.5	2	2	2	2	2	2	
20	3101985	LEVER, APERTURE ACTUATING	AK17-17	1	1	1	1	1	1	
21	3101986	LEVER, APERTURE CAM SENSING	AK17-P12	1						
22	3101987	LEVER, OPERATING, BLADE OPERATING RING	AK17-16	1	1	1	1	1	1	
23	3101988	RING, BLADE OPERATING	AK17-12	1	1	1	1	1	1	
24	3512612	SCREW, FLTHD, 1.4x4.0, BLADE	CCP4	2	2	2	2	2	2	
25	3101989	BLADE, DIAPHRAGM	AK17-14K1	6	6				6	
26	3101990	RING, BLADE	AK17-13	1	1	1	1	1	1	
27	3512570	SCREW, PNHD, 1.7x3.5, BRASS, SLOT	BD 35	2		2	2			
28	3512029	SCREW, PNHD, 1.7x2.5, BRASS, SLOT	BD 22	3	3	3	3	3	3	
29	3101991	HOUSING, DIAPHRAGM	AK17-11	1	1	1	1	1	1	
30	3512544	SETSCREW, 1.7x2.5	AD 2.5	6	6	6	6	6	6	
31	3512131	SETSCREW, 1.7x2.0	AD 2.0	3	3	3	3	3	3	
32	3512119	SCREW, PNHD, 1.7x3.0, BLK	EDP 3.0	5	3	3	3	3	3	
33	3101992	RING, SCALE RING RETAINING	AK17-27	1	1	1	1	1	1	
34	3101993	GRIP, RUBBER	AK17-26	1	1	1	1	1	1	
35	3101994	RING, SCALE	AK17-25	1	1	1	1	1	1	
36	3101995	SCREW, FLTHD, 2.0x4.0, BLK	CEP 4	1	1	1	1	1	1	
37	3512599	SCREW, FLTHD, 1.7x2.7, BLK	CDP 2.7	5	5	5	5	5	5	
38	3101996	CAM, APERTURE	AK17-P5	1						
39	3512634	SCREW, PNHD, 1.4x2.0, BLK	ECP2	2	2			1	1	
40	3101997	LEVER, MANUAL ACTUATING	AK17-P11	1						
41	3101998	RING, AUTO/MANUAL	AK17-P7	1						
42	3101999	SCREW, PNHD, 1.4x1.8, BLK	ECP 1.8	2						
43	3102000	LEVER, AUTO/MANUAL SELECT	AK17-P10	1						
46	3102003	PLATE, APERTURE LIMIT	AK17-22	1	1	1	1	1	1	
47	3102004	FRAME, MOUNT	AK17-P4	1						
48	3102005	POST, GUIDE, THREADED	TD 133	1						

VIVITAR AUTOMATIC FIXED MOUNT LENS 17mm f/3.5

COMPLETE PARTS LIST, Continued

Ref.	Vivitar Part No.	Description	Part Code	Quantity						
				U	N	M	C	K	O	
49	3102006	RING, INDEX	AK17-P3	1						
50	3512586	BALL, STEEL, 2mm	B2	1						
51	3512679	SPRING, DETENT	S2B	1						
52	3512123	SCREW, RNDHD, 1.4x1.8, BRASS, SLOT	BC1.5	1						
53	3102007	RING, APERTURE	AK17-P2	1						
54	3102008	LEVER, APERTURE	AK17-P8K1	1						
55	3102009	PIN, APERTURE	PR13	1						
56	3102010	MOUNT, REAR, UNIVERSAL-M42	AK17-P1	1						
57	3516084	SCREW, FLTHD, 1.7x4.5, BLK	CDP 4.5A	4						
58	3102011	BAFFLE, REAR	AK17-P6	1						
59	3102012	RING, RETAINING, 7TH/8TH, LENS ELEMENT	AK17-9	1	1	1	1	1	1	
60	3102013	LENS ELEMENT, 7TH/8TH, (DOUBLET)	AK17-G7/G8	1	1	1	1	1	1	
61	3102014	HOUSING, REAR LENS GROUP	AK17-8	1	1	1	1	1	1	
62	3102015	LENS ELEMENT, 9TH	AK17-G9	1	1	1	1	1	1	
63	3102016	RING, RETAINER, 9TH LENS ELEMENT	AK17-10	1	1	1	1	1	1	
64	3102017	HELICOID, INNER	AK17-18	1	1	1	1	1	1	
65	3102018	HELICOID, MIDDLE	AK17-19	1	1	1	1	1	1	
66	3102019	HELICOID, OUTER	AK17-20	1	1	1	1	1	1	
67	3102020	GUIDE, HELICOID	AK17-21	2	2	2	2	2	2	
68	3102021	SCREW, PNHD, 1.7x2.5, BLK	TD 7	4	4	4	4	4	4	
69	3102022	LEVER, APERTURE CAM SENSING	AK17-N13	1						
70	3102023	CAM, APERTURE	AK17-N5	1						
71	3102024	FRAME, MOUNT	AK17-N4	1						
72	3102025	RING, INDEX	AK17-N3	1						
73	3102026	RING, APERTURE N/F	AK17-N2	1						
74	3102027	FORK, COUPLING, APERTURE N/F	AK17-N12	1						
73A	3102028	RING, APERTURE, N/AI (ONLY)	AK17-N2-02	1						
74A	3102029	FORK, APERTURE COUPLING, N/AI (ONLY)	AK17-N12-02	1						
75	3512633	SCREW, PNHD, 1.4x2.5, CHROME	ECP 2.5	2		2				
76	3512133	BALL, STEEL, 1.5mm	B 1.5	6	6	12	6	6		
77	3513661	SPACER, BALL	S13	6						
78	3102030	LEVER, APERTURE TRANSFER	AK17-N11	1						
79	3102031	RING, APERTURE TRANSFER	AK17-N7	1						
80	3102032	LEVER, APERTURE	AK17-N10	1						
81	3102033	RING, BALL RACE	AK17-N9	1						
82	3102034	RING, BALL RACE RETAINER	AK17-N8	1						
83	3102035	MOUNT, REAR, NIKON	AK17-N1	1						
84	3512547	SETSCREW, 1.4x1.75	AC 1.75	3						
85	3512597	SCREW, FLTHD, 1.7x3.5, BLK	CDP 3.5B	3				6	3	
86	3102036	BAFFLE, REAR	AK17-N6	1						
87	3512715	SCREW, SPECIAL HEAD, 1.4x1.0	TC1	1						
88	3102037	BLADE, DIAPHRAGM	AK17-14K1			6	6	6		
89	3102038	CAM, APERTURE, MINOLTA	AK17-SR5			1				
90	3102039	FRAME, MOUNT	AK17-SR4			1				
91	3102040	RING, INDEX	AK17-SR3			1				
92	3102041	RING, APERTURE, MINOLTA SR	AK17-SR2			1				
92A	3102069	RING, APERTURE, MINOLTA MD (ONLY)	AK17-SRD-2			1				
93	3102042	RING, RETAINING, BALL RACE	AK17-SR8			1				
94	3102043	LEVER, APERTURE ACTUATING	AK17-SR9K1			1				
95	3102044	RING, APERTURE TRANSFER	AK17-SR7			1				

VIVITAR AUTOMATIC FIXED MOUNT LENS

17mm f/3.5

COMPLETE PARTS LIST, Continued

Ref.	Vivitar Part No.	Description	Part Code	Quantity						
				U	N	M	C	K	O	
96	3512678	SPRING	S7				1			
97	3102045	LEVER, APERTURE	AK17-SR11				1			
98	3102046	MOUNT, REAR, MINOLTA	AK17-SR1				1			
99	3516237	SCREW, FLTHD, 1.7x6.5, CHROME	CDP 6.5				4			
100	3102047	BAFFLE, REAR	AK17-SR6				1			
101	3102048	CAM, APERTURE	AK17-CFT10K1					1		
102	3102049	FRAME, MOUNT	AK17-CFT20					1		
103	3102050	RING, INDEX	AK17-CFT19					1		
104	3102051	RING, APERTURE	AK17-CFT3					1		
105	3102052	LEVER, EE SELECTOR	AK17-CFT14					1		
106	3102053	SCREW, PNHD, 1.4x3.5, BLK	ECP 3.5A				4			
107	3512569	SPRING POST	BD36						2	
108	3102054	SPRING, A/M DETENT	AK17-CFT13					1		
109	3514174	PIN, EE SIGNAL	PR159					1		
110	3512682	SPRING, DETENT, 1.5x3.5	S 1.5B					1		
111	3512688	SPRING POST	TD216					1		
112	3512581	SPRING POST	BC5					2		
113	3512619	SCREW, FLTHD, 1.4x2.0, BLK	CCP2					1		
114	3514187	SCREW, OVLHD, 1.4x2.2, SLOT	DC2.2					2		
115	3102055	RING, LOCKING	AK17-CFT2					1		
116	3102056	PLATE, DETENT LOCK	AK17-CFT11					1		
117	3512601	SCREW, FLTHD, 1.7x2.0, BLK	CDP2					2		
118	3514186	SPRING	S90					1		
119	3512057	RING, RETAINING, BALL RACE	AK17-CFT7					1		
120	3102058	HOUSING, A/M RING BALL RACE	AK17-CFT6					1		
121	3102059	RING, APERTURE LEVER	AK17-CFT5K1					1		
122	3102060	LEVER, APERTURE	AK17-CFT17					1		
123	3102061	RING, SENSE PIN	AK17-CFT8K1					1		
125	3514190	SPACER, BALL	S118					8		
126	3102062	RING, AUTO/MANUAL	AK17-CFT4					1		
127	3102063	PLATE, LOCKING RING	AK17-CFT12					1		
128	3102064	MOUNT, REAR, CANON	AK17-CFT1					1		
129	3102065	PLATE, APERTURE	AK17-CFT18					1		
130	3102066	PLATE	AK17-CFT15					1		
131	3102067	SCREW, PNHD, 1.4x2.2	ECP 2.2A					1		
132	3514175	SPRING POST	TD105					1	1	
133	3102068	PLATE	AK17-CFT16					1		
135	3102070	LEVER, IRIS ACTUATOR	AK17-FT9K1						1	
136	3102071	FRAME, MOUNT	AK17-FT2K1						1	
137	3102072	SPRING, EE LOCK PIN	AK17-FT14						1	
138	3102073	RING, INDEX	AK17-FT3						1	
139	3102074	RING, APERTURE	AK17-FT4						1	
140	3102075	PLATE, EE LOCK	AK17-FT12						1	
141	3102076	SCREW, FLTHD, 1.4x4.5	CCP 4.5						2	
142	3102077	RING, RETAINER, BALL RACE	AK17-FT6						1	
143	3102078	PLATE	AK17-FT13						1	
144	3102079	RING, BALL RACE	AK17-FT5						1	
145	3516960	SCREW, PNHD, 1.7x5.0, BLK	EDPT5						2	
146	3102080	SPACER, BALL	S101						6	
147	3102081	MOUNT, REAR, KONICA	AK17-FT1						1	

VIVITAR AUTOMATIC FIXED MOUNT LENS

17mm f/3.5

COMPLETE PARTS LIST, Continued

Ref.	Vivitar Part No.	Description	Part Code	Quantity						
				U	N	M	C	K	O	
148	3102082	BAFFLE, REAR	AK17-FT7						1	
149	3512583	SCREW, STOP	BB3						1	
150	3102983	LEVER, APERTURE	AK17-FT11						1	
151	3102084	PLATE, APERTURE	AK17-FT8						1	
152	3102085	PIN, EE LOCK	PR392						1	
153	3102086	LEVER, APERTURE CAM SENSING	AK17-OM16						1	
154	3102087	CAM, APERTURE	AK17-OM18						1	
155	3102088	LEVER, APERTURE COUPLING	AK17-OM11						1	
156	3102089	FRAME MOUNT	AK17-OM3						1	
157	3102090	RING, SCALE	AK17-OM4						1	
158	3102091	RING, APERTURE	AK17-OM2						1	
159	3102092	LEVER, APERTURE TRANSFER	AK17-OM17						1	
160	3102093	RING, APERTURE TRANSFER	AK17-OM5						1	
161	3102094	PLATE, APERTURE LEVER	AK17-OM9						1	
162	3500071	SPRING POST	TD131						1	
163	3500072	SPRING	S170						1	
164	3102095	LEVER, MANUAL	AK17-OM8						1	
165	3102096	SPRING POST	TD132						1	
166	3102097	ACTUATOR, MANUAL LEVER	AK17-OM13						1	
167	3102098	MOUNT, REAR, OLYMPUS	AK17-OM1						1	
168	3102099	BAFFLE	AK17-OM6						1	
169	3512582	SCREW PNHD, 1.4x3.0, BLK. SLOT	BC3		1				3	
170	3102100	BUTTON LOCK COMPLETE	AK17-OM12K1						1	
171	3102101	BUTTON, MANUAL	AK17-OM15						1	
172	3500079	SPRING	S175						1	
173	3512707	SPRING POST	TD9						1	
174	3102102	RING, MOUNT	AK17-OM7						1	
175	3102103	LEVER, APERTURE	AK17-OM10						1	
176	3512670	SPACER, BALL	S40						6	
177	3512574	SCREW, PNHD, 1.7x2.0, SLOT	BD4						1	
178	3103783	LEVER, APERTURE CAM SENSING	AK17-FT15						1	
501	3102121	HELICOID ASSY	AK17-20K1	1	1	1	1	1	1	
502	3102122	TRANSFER LEVER ASSY	AK17-P23K1	1	1				1	
503	3103782	TRANSFER LEVER ASSY	AK17-SR23K1			1	1		1	



Faithfully restored from a photocopy by

Prepared by:
Service Engineering Div.,

Vivitar Corporation
Corporate Offices:
1630 Stewart Street, Santa Monica, Ca 90406

Printed in U.S.A.

Vivitar is an International Trademark of Vivitar Corporation