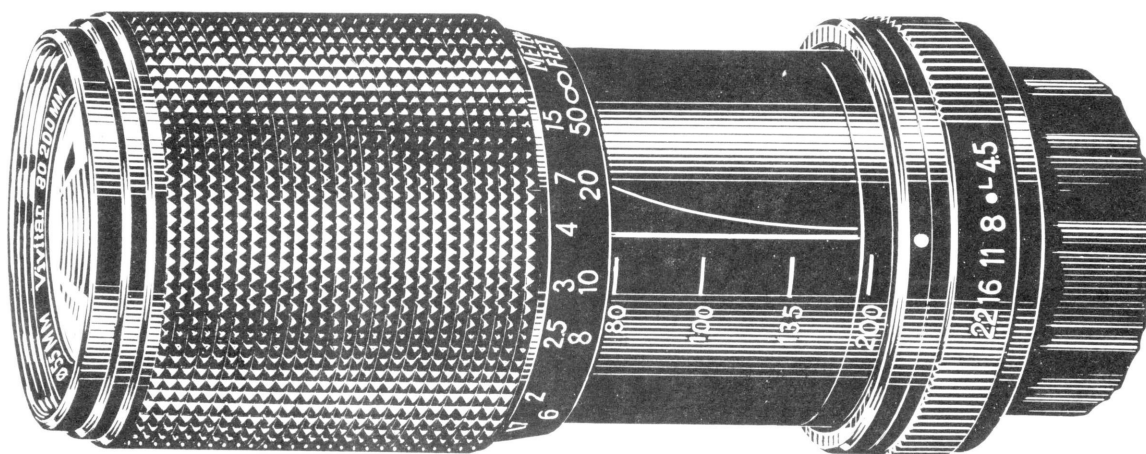


Vivitar

Illustrated Parts List



Automatic Fixed Mount Lens
80-200mm f/4.5
Macro Focusing Zoom

Publication No. 3746177 / August 1982

This publication consists of the following pages:

Page	Revision	Date
Front Cover	Orig	8/82
Page A	Orig	8/82
i, ii	Orig	8/82
1 – 15	Orig	8/82

For complete list of current manuals available, please request Vivitar Service Publications Index, Publication No. 3746068, from nearest Vivitar Service Center (See page i).

HOW TO USE THIS PUBLICATION

HOW TO FIND PART ORDER NUMBERS

Parts are illustrated on exploded view drawings where each part is identified by a reference number or designator. These reference numbers appear in sequence in the parts lists where they are cross-referenced to the part numbers and descriptions.

When a part is not available separately it will be so indicated by a footnote and can be obtained by ordering the assembly containing it. The part number of the assembly may be shown immediately to the right on the same line in an "Included in Assembly" column or at the end of the parts list(s).

In parts lists for lens items, quantities of each item are listed as used in the different lens mounts. The mounts are referred to as:

U	=	Vivitar Thread Mount	K	=	Konica Autoreflex Series Mounts
N	=	Nikon Mounts	O	=	Olympus OM Series Mount
M	=	Minolta Mounts	P	=	Pentax K Mounts
C	=	Canon Mounts	Y	=	Yashica/Contax Mount

Note that many parts are common to more than one mount. This commonality is shown in the Complete Parts List at the end of the manual so that the service centers desiring to stock replacement parts can order economically.

CAUTION

This publication is intended for use by persons having skills and equipment needed to service the subject product(s) safely and correctly. Users are cautioned that special tools and/or test equipment may be required for proper disassembly, reassembly, alignment, or adjustment or damage to the product may result.

Notice: Information contained herein is subject to change without notice.

HOW TO ORDER PARTS OR SERVICE PUBLICATIONS

Please furnish the model number and serial number of the product for which parts are being ordered. For each part requested, please supply part number, description, and required quantity. Mail or phone parts orders to:

U.S.A.

Vivitar Corporation
Central Parts Service
2700 Pennsylvania Avenue
Santa Monica, CA 90406
Tele: (213) 829-3672
or (213) 870-0181

CANADA

Vivitar Canada Ltd/Ltee
5211 Creekbank Road
Mississauga, Ontario, L4W 1R3
Canada
Tele: (416) 624-1761

BELGIUM

Vivitar Belgium, S.A.
29, Passage International
Boite 35
1000 Brussels, Belgium
Tele: 2 2191277
or 2 2191383

UNITED KINGDOM

Vivitar U.K. Ltd
Vivitar House
Ashville Trading Estate
Nuffield Way
Abingdon, Oxon OX14 1RP
United Kingdom
Tele: (0235) 26600

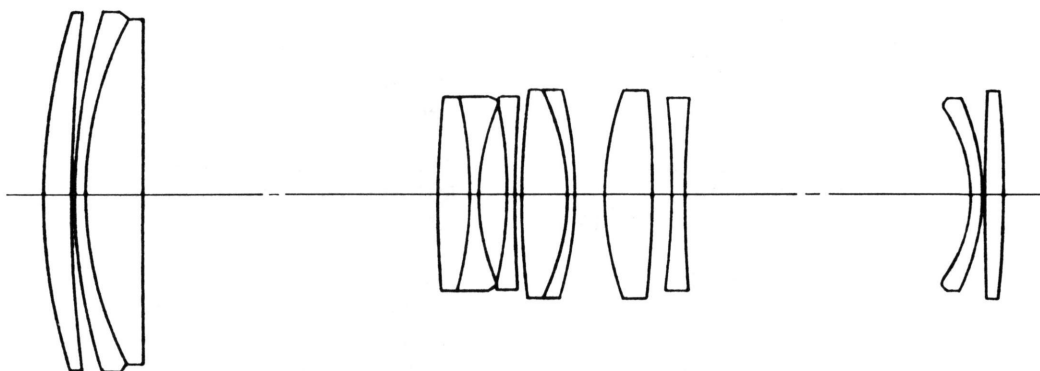
ASIA, OCEANIA, AFRICA, MIDDLE EAST, CARIBBEAN, LATIN AMERICA

Vivitar Japan Ltd
Marusho Bldg., 6th Floor
12 Yotsua 3-Chome
Shinjuku-Ku
Tokyo 160, Japan
Tele: 357-6021

Automatic Fixed Mount Lens
80-200mm f/4.5
Macro Focusing Zoom

LIST OF ILLUSTRATIONS

<u>Figure</u>	<u>Title</u>	<u>Page</u>
1	Common Parts and Assemblies	2
2	Nikon AI Mount Assembly	5
3	Minolta MD Mount Assembly	6
4	Canon FD Mount Assembly	6
5	Konica AR Mount Assembly	8
6	Olympus OM Mount Assembly	8
7	Pentax K Mount Assembly	10
8	Yashica/Contax Mount Assembly	10



IDENTIFICATION AND MOUNT CONFIGURATIONS

This publication is the Illustrated Parts List for the Vivitar 80-200mm f/4.5 One-Touch Macro Focusing Automatic Fixed Mount Lens. This lens can be distinguished from earlier 80-200mm Vivitar lenses by having serial numbers starting with 77.

The manual contains exploded view drawings of all configurations of the lens. Facing each drawing or on the same page is a parts list keyed to the drawing by reference numbers and providing part numbers, descriptions, and quantities for each part. Availability of parts is indicated by footnotes. At the back of the manual is a complete parts list in Vivitar part number sequence showing the usage of each part in each mount configuration of the lens.

These lenses are furnished in seven mount configurations identified by the Marketing Stock Numbers and Part Numbers shown below.

Mount	Marketing Stock No.	Vivitar Part No.
Nikon AI Mount (N)	0217413	3900482
Minolta MD Mount (M)	0217398	3900483
Canon FD Mount (C)	0217402	3900484
Konica AR Mount (K)	0217457	3900485
Olympus OM Mount (O)	0217424	3900486
Pentax K Mount (P)	0217435	3900487
Yashica/Contax Mount (Y)	0217446	3900488

GENERAL SPECIFICATIONS*

Aperture Range	f/4.5-f/22 (Konica to f/16)
Optical Construction	12 Elements in 9 Groups
Angle of Acceptance	30 degrees — 12 degrees
Minimum Focusing Distance to Film Plane	15.7 in. (400mm) in Macro Mode
Maximum Reproduction Ratio	1:3 at 80mm in Macro
Length	5 in. (128mm)
Weight	21 oz. (600 g)
Maximum Barrel Diameter	2.5 in. (63mm)
Accessory Size	55mm

*Specifications subject to change without notice.

**Automatic Fixed Mount Lens
80-200mm f/4.5
Macro Focusing Zoom**

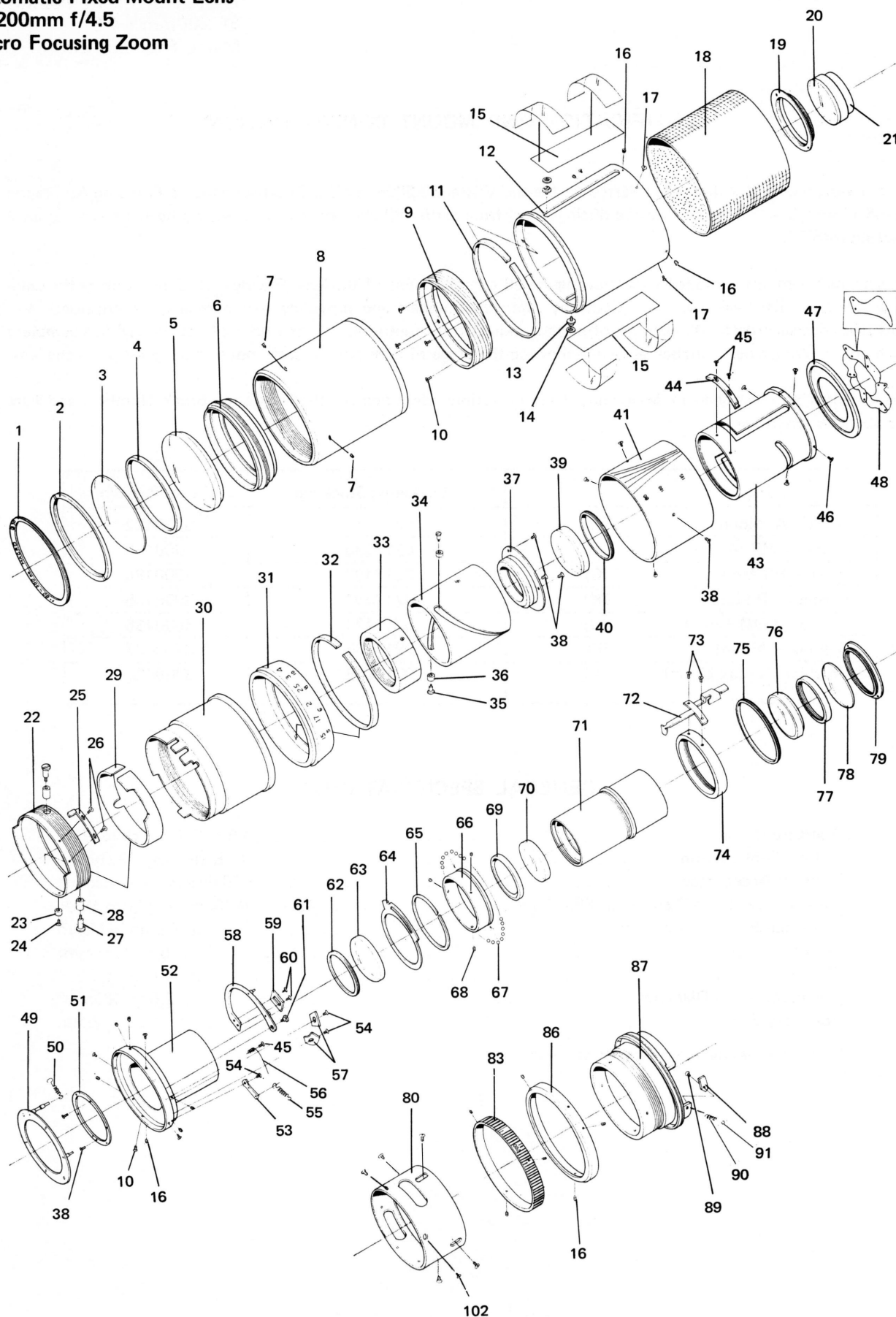


Figure 1. Common Parts and Assemblies

Automatic Fixed Mount Lens
80-200mm f/4.5
Macro Focusing Zoom

Parts List for Figure 1. Common Parts and Assemblies

Ref.	Vivitar Part No.	Description	Quantity	Part Code
1	3110411	RING, NAME	1	820001
2	3110412	RING, 1ST ELEMENT RTNG	1	820004
3	3110413	LENS ELEMENT, 1ST	1	820G1
4	3110414	RING, SPACER, 1ST & 2/3RD ELEM	1	820003
5	3110415	LENS DOUBLET, 2ND & 3RD ELEM	1	820G2/3
6	3110416	HOUSING, FRONT LENS GROUP	1	820002
7	3512544	SETSCREW, 1.4x2.5, BLK	3	Not Issued
8	3110417	HELICOID, OUTER	1	820005
9	3110418	HELICOID, INNER	1	820006
10	3512602	SCREW, FLTHD, 1.7x3.0, BLK	4	Not Issued
11	3110419	SEAL, FELT	1	820071
12	3110420	TUBE, FOCUSING	1	820007
13	3110421	SCREW, ROLLER SHAFT	2	820018-A
14	3110422	ROLLER, CAM	2	820018-B
15	3110423	PLATE, COVER	2	820062
16	3110424	SETSCREW, 1.4x1.5	9	820099
17	3110650	SCREW, FLTHD, 1.4x3.4	3	Not Issued
18	3110425	GRIP, RUBBER	1	820063
19	3110426	RING, 4/5TH ELEMENTS RTNG	1	820014
20	3110427	LENS DOUBLET, 4TH & 5TH ELEM	1	820G4/5
21	3110428	LENS ELEMENT, 6TH	1	820G6
22	3110429	RING, ZOOM DRIVE	1	820016
23	3110430	ROLLER, FOCUSING STOP	1	820013
24	3110648	SCREW, FLTHD, 1.7x3.2	1	Not Issued
25	3110431	SPRING, MACRO SWITCH	1	820020
26	3105725	SCREW, PANHD, 1.7x1.5	2	Not Issued
27	3110432	SCREW, ROLLER SHAFT	2	820021-A
28	3110433	ROLLER, CAM SLOT	2	820021-B
29	3110434	RING, TEFLON	1	820061
30	3110435	RING, ZOOM CONNECTING	1	820017
31	3110436	RING, FOCUS SCALE	1	820012
32	3110437	SEAL, FELT	1	820072
33	3110438	RING, FRONT ZOOM SLIDE	1	820009
34	3110439	TUBE, CAM SLOT	1	820010
35	3110440	SCREW, ROLLER SHAFT	2	820024-A
36	3110441	ROLLER, CAM SLOT	2	820024-B
37	3110442	HOUSING, 7/8TH ELEMENTS	1	820101
38	3512974	SCREW, FLTHD, 1.4x2.0	3	QS1425
39	3110443	LENS DOUBLET, 7TH & 8TH ELEM	1	820G7/8
40	3110444	RING, 7/8TH ELEMENTS RTNG	1	820015
41	3110445	TUBE, ZOOM SCALE	1	820022
43	3110446	TUBE, MAIN BODY	1	820008
44	3110447	LUG, MACRO SWITCH	1	820019
45	3513028	SCREW, PANHD, 1.4x3.0	3	Not Issued
46	3513062	SCREW, FLTHD, 1.7x3.0	4	Not Issued
47	3110448	RING, DIAPHRAGM BLADE RTNG	1	820032
48	3110449	BLADE, DIAPHRAGM	6	820030
49	3110450	RING, BLADE OPERATING	1	820034
50	3110451	SPRING, COIL, DIAPHRAGM	1	820057
51	3110452	RING, DIAPHRAGM BLADE	1	820033
52	3110453	HOUSING, DIAPHRAGM	1	820025
53	3110455	PLATE, SPRING, HOOK	1	820048
54	3512984	SCREW, PANHD, 1.4x1.8	3	Not Issued
55	3110454	SPRING, COIL, TENSION	1	820058
56	3110456	SPRING, WIRE, DIAPHRAGM ACTUATOR	1	820053
57	3110457	PLATE, OPERATING RING STOP	2	820059
58	3110458	LEVER, DIAPHRAGM ACTUATOR	1	820049
59	3110459	PLATE, ADJUSTABLE	1	820054
60	3110792	SCREW, PANHD, 1.4x1.2x2.4	2	Not Issued
61	3110460	SCREW, PIVOT, ACTUATOR LEVER	1	820050

Parts List continued on following page.

**Automatic Fixed Mount Lens
80-200mm f/4.5
Macro Focusing Zoom**

Parts List for Figure 1 (continued). Common Parts and Assemblies

Ref.	Vivitar Part No.	Description	Quantity	Part Code
62	3110461	RING, 9TH ELEMENT RTNG	1	820037
63	3110462	LENS ELEMENT, 9TH	1	820G9
64	3110463	RING, APERTURE CAM	1	820047
65	3110464	RING, RTNG, SPLIT	1	820046
66	3110465	RING, BALL RTNG	1	820039
67	3512899	BALL, STEEL, 1.2	101	8201.2
68	3110793	SETSCREW, 1.7x1.6	3	Not Issued
69	3110466	RING, SPACER, G9/10	1	820036
70	3110467	LENS ELEMENT, 10TH	1	820G10
71	3110468	HOUSING, MASTER LENS GROUP	1	820035
72	3110469	ARM, DIAPHRAGM TRANSFER	1	820043
73	3107738	SCREW, FLTHD, 1.7x1.3	2	Not Issued
74	3110470	RING, DIAPHRAGM TRANSFER	1	820040
75	3110471	RING, BALL RTNG	1	820041
76	3110472	LENS ELEMENT, 11TH	1	820G11
77	3110473	RING, SPACER, G11/12	1	820038
78	3110474	LENS ELEMENT, 12TH	1	820G12
79	3110475	RING, 12TH ELEM RTNG	1	820042
80	3110476	RING, CONNECTING	1	820027
82	3110798	SCREW, PANHD, 1.7x2.0x3.0	4	Not Issued
83	3110477	RING, FOCUSING ADJUSTMENT	1	820029
86	3110479	RING, INDEX	1	820026
87	3110480	FRAME, MOUNT	1	820028
88	3110481	SPRING, LEAF, DETENT	1	820112
89	3110646	SCREW, PANHD, 1.7x2.2, DETENT SPRING	1	820103
90	3110794	SPRING, COIL, DETENT, 1.5x2.7	1	820110
91	3513041	BALL, STEEL, 1.5	1	820102
102	3110773	SCREW, FLTHD, 1.7x2.4	3	8207086

MAJOR ASSEMBLIES

The following major assemblies are normally stocked.

Vivitar Part No.	Description	Part Code
3110992	DIAPHRAGM HOUSING ASSY, M/MD	820MDA
3110993	DIAPHRAGM HOUSING ASSY, C/FD	820CFA
3110994	DIAPHRAGM HOUSING ASSY, N/AI	820NIA
3110995	DIAPHRAGM HOUSING ASSY, O/OM	820OMA
3110996	DIAPHRAGM HOUSING ASSY, P/K	820PKA
3110997	DIAPHRAGM HOUSING ASSY, K/AR	820KAA
3110998	DIAPHRAGM HOUSING ASSY, Y/CX	820YCA
3110999	MOUNT ASSY, COMPLETE, M/MD	820MDM
3111000	MOUNT ASSY, COMPLETE, C/FD	820CFM
3111001	MOUNT ASSY, COMPLETE, N/AI	820NIM
3111002	MOUNT ASSY, COMPLETE, O/OM	820OMM
3111003	MOUNT ASSY, COMPLETE, P/K	820PKM
3111004	MOUNT ASSY, COMPLETE, K/AR	820KAM
3111005	MOUNT ASSY, COMPLETE, Y/CX	820YCM

**Automatic Fixed Mount Lens
80-200mm f/4.5
Macro Focusing Zoom**

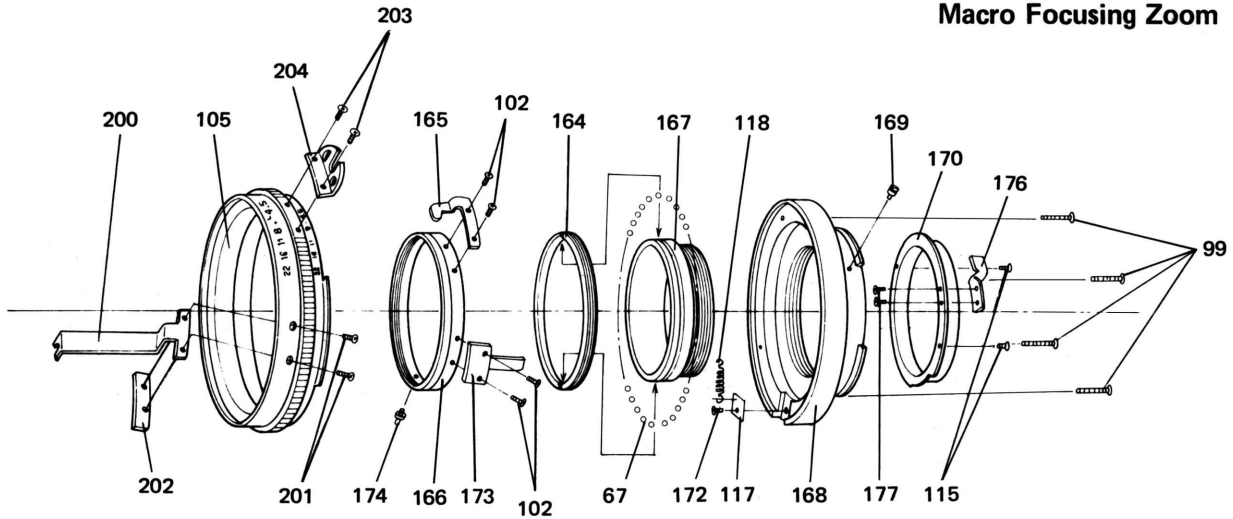


Figure 2. Nikon AI Mount Assembly

Parts List for Figure 2.

Ref.	Vivitar Part No.	Description	Quantity	Part Code
67	3512399	BALL, STEEL, 1.2	101	8201.2
99	3101573-1	SCREW, PANHD, 1.7x8.0, CHR	4	820074
102	3110773	SCREW, FLTHD, 1.7x2.4	4	8207086
105	3110495	RING, APERTURE SETTING, N/AI	1	820045N
115	3513859	SCREW, FLTHD, 1.4x2.5	4	820064
117	3110500	PLATE, SPRING HOOK	1	820208
118	3110778	SPRING, COIL, TENSION	1	820239
164	3110540	RING, BALL RTNG/LOCKING	1	820203
165	3110541	ARM, DIAPHRAGM TRANSFER	1	8207096
166	3110542	RING, DIAPHRAGM TRANSFER	1	820202
167	3110543	RING, BALL RACE	1	820201
168	3110544	MOUNT, N/AI	1	820209
169	3110780-1	SCREW, MOUNT STOP	1	820013A
170	3110546	RING, REAR PROTECTIVE	1	8207097
172	3512634	SCREW, PANHD, 1.7x2.0	2	820075
173	3110547	ARM, DIAPHRAGM COUPLING	1	820204
174	3110548	SCREW, SPRING POST	1	820207
176	3110549	LUG, MAX APERTURE	1	820090
177	3512626	SCREW, FLTHD, 1.4x1.5	2	820096
200	3111006	ARM, APERTURE TRANSFER	1	820044
201	3107586	SCREW, FLTHD, 1.7x6.0, BLK	2	820106
202	3111007	PLATE, APERTURE STOP	1	820076
203	3111009	SCREW, COUPLING FORK	2	820Coupler
204	3111010	FORK, METER COUPLING	1	820077

Macro Focusing Zoom

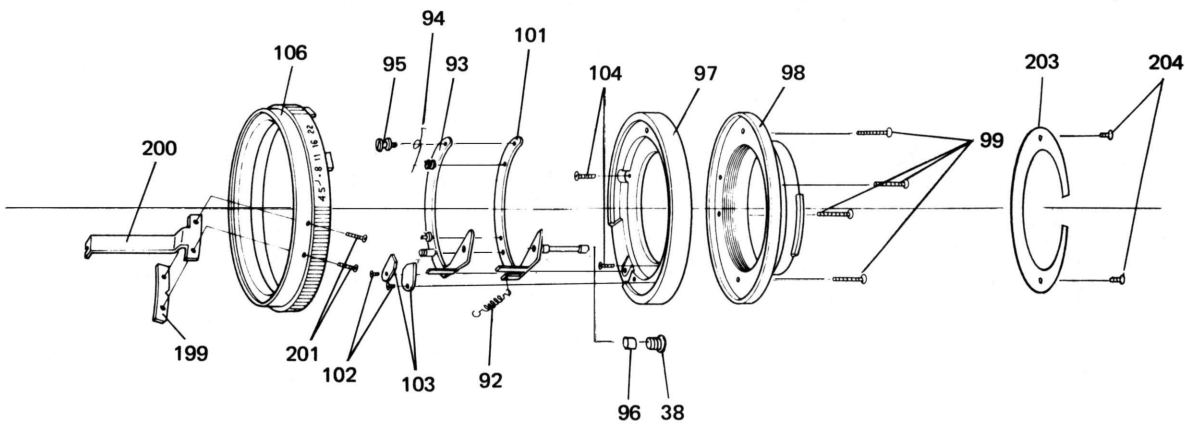


Figure 3. Minolta MD Mount Assembly

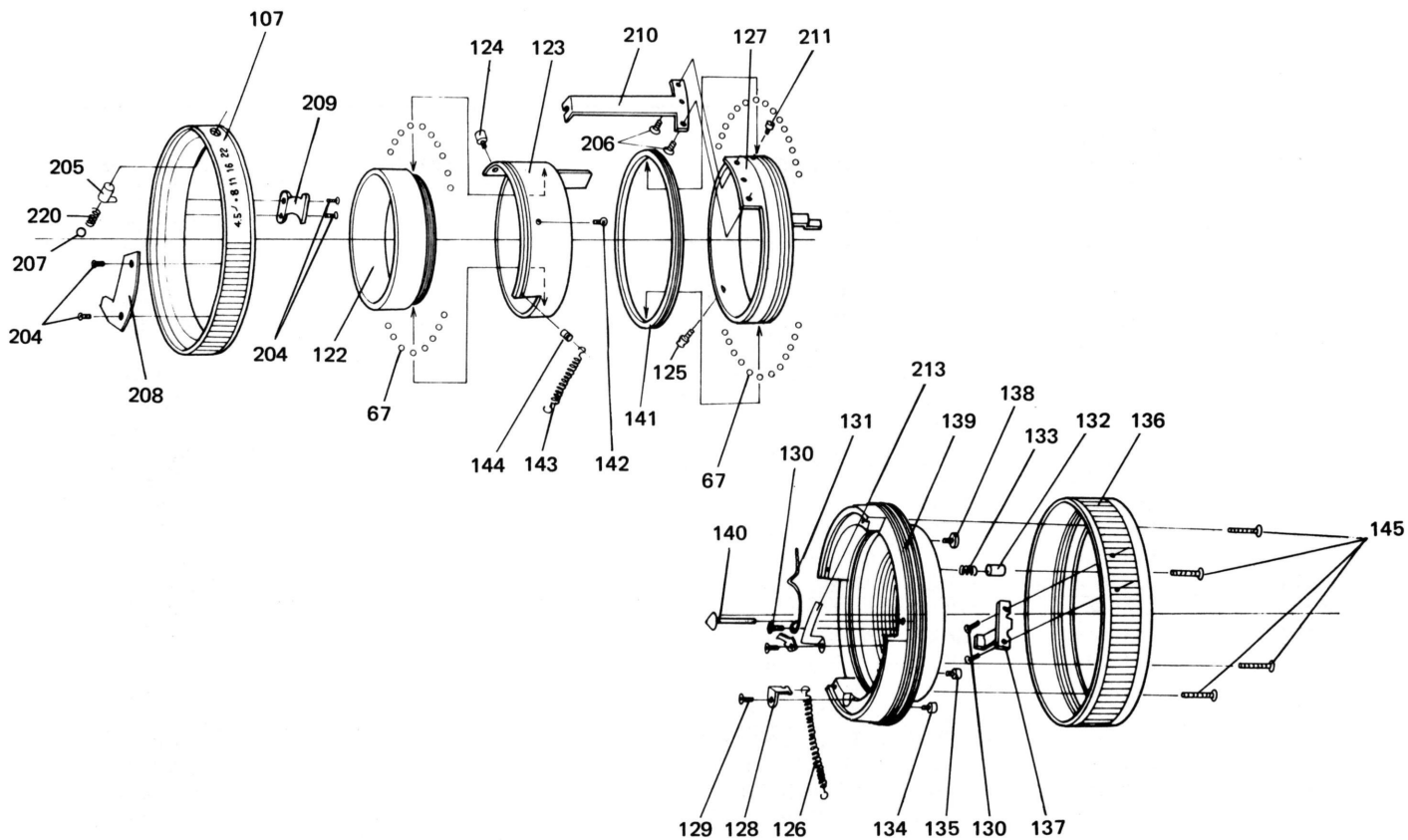


Figure 4. Canon FD Mount Assembly

Parts List for Figure 3. Minolta MD Mount Assembly

Ref.	Vivitar Part No.	Description	Quantity	Part Code
38	3512974	SCREW, FLTHD, 1.4x2.0	1	QS1425
92	3110482	SPRING, COIL, TENSION	1	820255
93	3110483	LEVER I ASSY W/PINS	1	820243A
94	3110484	SPRING, WIRE, LEVER I	1	820252
95	3110485	SCREW, PIVOT, LEVER I	1	820247
96	3110486	BUSHING, ECCENTRIC	1	820261
97	3110487	FRAME, MOUNT, M/MD	1	820262
98	3110488	MOUNT, M/MD	1	820249F
99	3101573-1	SCREW, PANHD, 1.7x8.0, CHR	4	820074
101	3110489	LEVER II ASSY W/PIN	1	820254A
102	3110773	SCREW, FLTHD, 1.7x2.4	5	8207086
103	3110490	PLATE, LEVER II GUIDE	2	820245
104	3103774	SCREW, FLTHD, 1.4x3.0	3	QS1445
106	3110491	RING, APERTURE SETTING, M/MD	1	820045M
115	3513859	SCREW, FLTHD, 1.4x2.5	2	820064
199	3111012	PLATE, APERTURE STOP	1	820087
200	3111006	ARM, APERTURE TRANSFER	1	820044
201	3107586	SCREW, FLTHD, 1.7x6.0, BLK	2	820106
203	3111013	RING, SHADE	1	820249S

Parts List for Figure 4. Canon FD Mount Assembly

Ref.	Vivitar Part No.	Description	Quantity	Part Code
67	3512899	BALL, STEEL, 1.2	230	8201.2
107	3110493	RING, APERTURE SETTING, C/FD	1	820045C
115	3513859	SCREW, FLTHD, 1.4x2.5	4	820064
122	3110504	RING, BALL RTNG	1	820284
123	3110505	RING, DIAPHRAGM TRANSFER	1	820281
124	3110506	SCREW, DIAPHRAGM TRANSFER RING	1	820289
125	3110507	SCREW, SPRING, POST	1	820294
126	3110508	SPRING, COIL, APERTURE SIGNAL	1	820297
127	3110509	RING, APERTURE SIGNAL TRANSFER	1	820282
128	3110510	HOOK, SPRING	2	820288
129	3512990	SCREW, PANHD, 1.4x2.5	4	820B1
130	3110775	SCREW, PANHD, 1.7x1.7x3.0	4	820B2
131	3110511	SPRING, WIRE, TRANSFER LOCK	1	820301
132	3110512	PIN, DETENT, BREECHLOCK RING	1	820290
133	3110513	SPRING, DETENT, BREECHLOCK RING	1	820300
134	3110514	SCREW, MOUNT STOP	1	820287
135	3110515	SCREW, STUD	1	820303
136	3110516	RING, BREECHLOCK	1	820283
137	3110517	LUG, BREECHLOCK STOP	1	820286
138	3110518	SCREW, STUD, MAX APERTURE	1	820302
139	3110519	MOUNT, CANON	1	820280
140	3110522	PIN, EE SIGNAL	1	820291
141	3110520	RING, BALL RTNG	1	820285-1
142	3110521	SCREW, STOP	2	820295
143	3110523	SPRING, COIL, TENSION	1	820298
144	3110524	SCREW, SPRING, POST	1	820293
145	3110797	SCREW, PANHD, 1.7x11.0, BLK	4	820074
205	3111015	BUTTON, EE LATCH RELEASE	1	820296
206	3110973	SCREW, PANHD, 1.4x2.0	2	820099-1
207	3516036	BALL, STEEL, 2.0	1	B2
208	3111017	PLATE, APERTURE TRANSFER	1	820073
209	3111019	PLATE, EE ACTUATOR	1	820292
210	3111021	ARM, DIAPHRAGM TRANSFER	1	820074-1
211	3110974	SCREW, STUD	1	820304
213	3111014	SPRING, LEAF, DETENT	1	820067
220	3111016	SPRING, COIL, DETENT	1	820299

Automatic Fixed Mount Lens
80-200mm f/4.5
Macro Focusing Zoom

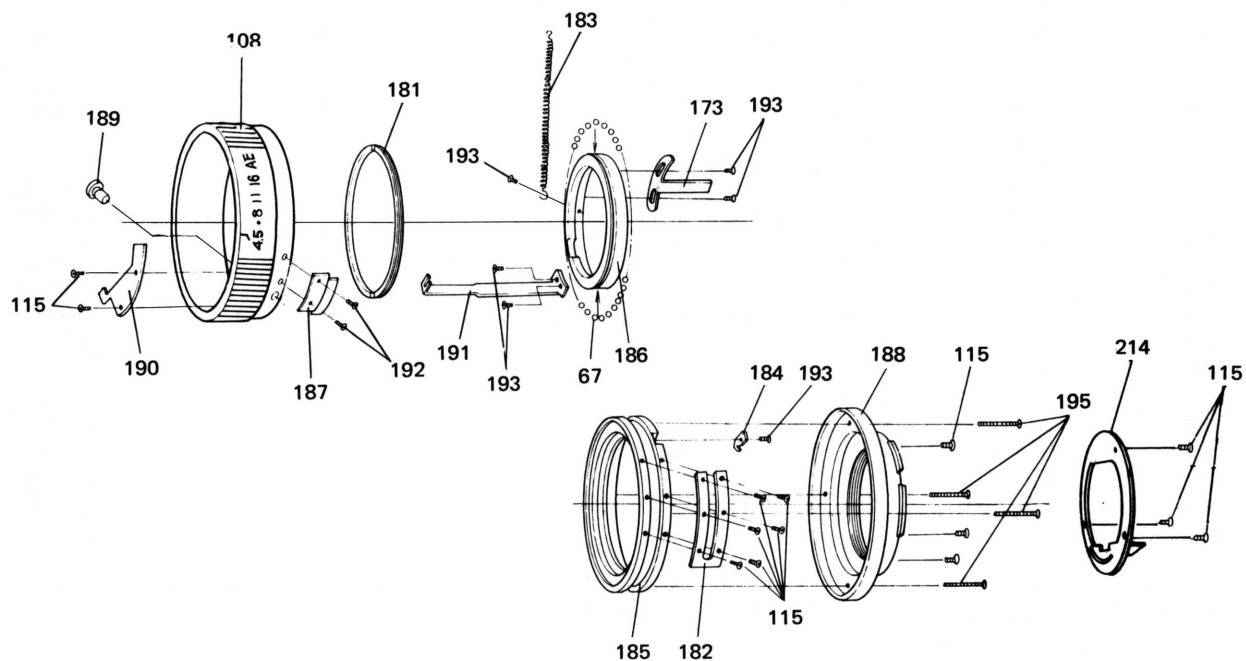


Figure 5. Konicar AR Mount Assembly

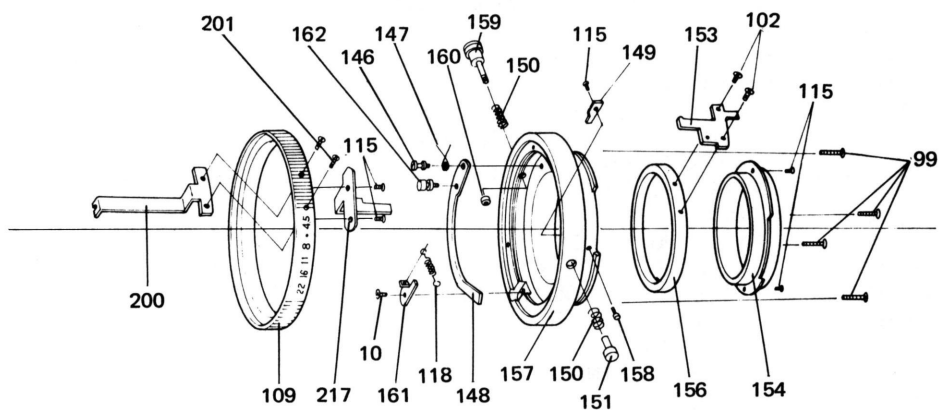


Figure 6. Olympus OM Mount Assembly

Parts List for Figure 5. Konica AR Mount Assembly

Ref.	Vivitar Part No.	Description	Quantity	Part Code
67	3512899	BALL, STEEL, 1.2	230	8201.2
108	3110497	RING, APERTURE SETTING, K/AR	1	820045K
115	3513859	SCREW, FLTHD, 1.4x2.5	3	820064
173	3110547	ARM, DIAPHRAGM COUPLING	1	820204
181	3110781	RING, BALL RTNG	1	820264
182	3110782	PLATE, AE LATCH	1	820266
183	3110783	SPRING, COIL, TENSION	1	820267
184	3110784	PLATE, SPRING HOOK	1	820268
185	3110785	FRAME, MOUNT	1	820275
186	3110786	RING, DIAPHRAGM TRANSFER	1	820276
187	3110787	LUG, AE SWITCH	1	820273
188	3110788	MOUNT, KONICA	1	820274
189	3110789	BUTTON, AE LATCH	1	820269
190	3110790	PLATE, APERTURE TRANSFER	1	820084
191	3110791	ARM, APERTURE TRANSFER	1	820085
192	3110796	SCREW, FLTHD, 1.4x1.3, CHR	2	Not Issued
193	3106319	SCREW, PANHD, 1.7x3.5, BLK	4	Not Issued
195	3512171	SCREW, PANHD, 1.7x12.5	4	820074-A
214	3111023	RING, SHADE	1	Not Issued

Parts List for Figure 6. Olympus OM Mount Assembly

Ref.	Vivitar Part No.	Description	Quantity	Part Code
10	3512602	SCREW, FLTHD, 1.7x3.0, BLK	4	Not Issued
99	3101573-1	SCREW, PANHD, 1.7x8.0, CHR	4	820074
102	3110773	SCREW, FLTHD, 1.7x2.4	5	8207086
109	3110494	RING, APERTURE SETTING, O/OM	1	820045O
115	3513859	SCREW, FLTHD, 1.4x2.5	6	820064
118	3110778	SPRING, COIL, TENSION	1	820239
146	3110526	SCREW, PIVOT, MANUAL LEVER	1	820223
147	3110527	SPRING, WIRE	1	820225
148	3110528	LEVER, MANUAL DIAPHRAGM	1	820219
149	3110529	PLATE, LOCK RELEASE	1	820234
150	3110777	SPRING, DETENT	2	820235
151	3110530	BUTTON, LOCK RELEASE	1	820236
153	3110531	ARM, DIAPHRAGM COUPLING	1	8207100
154	3110532	PIPE, SHADE	1	8207102
156	3110533	RING, DIAPHRAGM TRANSFER	1	7015
157	3110534	MOUNT, O/OM	1	820232
158	3110535	SCREW, MOUNT STOP	1	820241
159	3110536	BUTTON, MANUAL DIAPHRAGM	1	820226
160	3110537	NUT, DIAPHRAGM BUTTON	1	820227
161	3110538	PLATE, LEVER GUIDE	1	820228
162	3110539	PIN, SPRING POST	1	820224
200	3111006	ARM, APERTURE TRANSFER	1	820044
201	3107586	SCREW, FLTHD, 1.7x6.0, BLK	2	820106
217	3111027	ARM, APERTURE COUPLING	1	820078

Automatic Fixed Mount Lens
80-200mm f/4.5
Macro Focusing Zoom

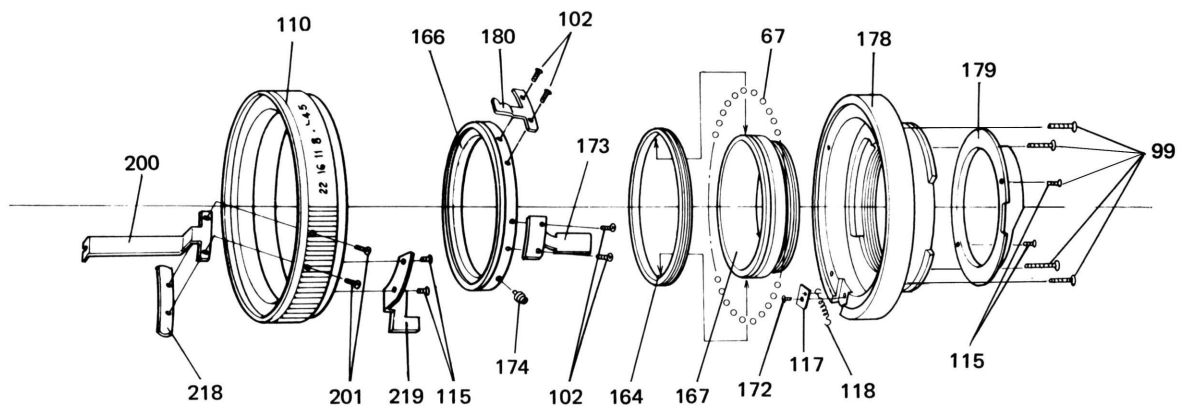


Figure 7. Pentax K Mount Assembly

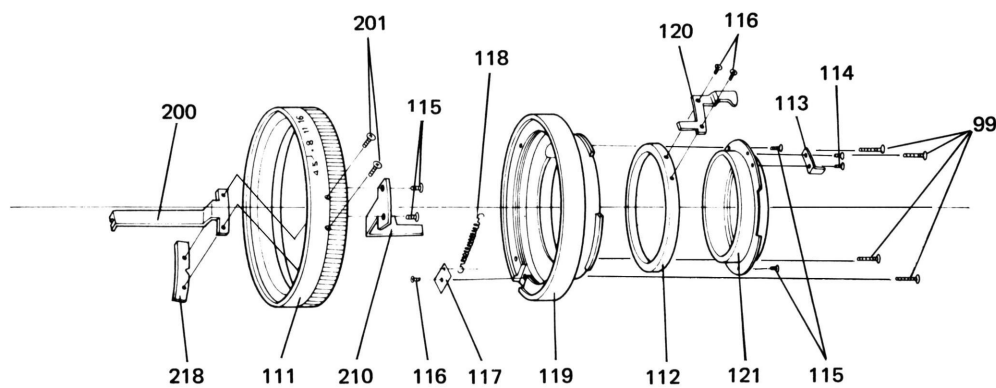


Figure 8. Yashica/Contax Mount Assembly

Automatic Fixed Mount Lens
80-200mm f/4.5
Macro Focusing Zoom

Parts List for Figure 7. Pentax K Mount Assembly

Ref.	Vivitar Part No.	Description	Quantity	Part Code
67	3512899	BALL, STEEL, 1.2	101	8201.2
99	3101573-1	SCREW, PANHD, 1.7x8.0, CHR	4	820074
102	3110773	SCREW, PANHD, 1.7x2.4	4	8207086
110	3110496	RING, APERTURE SETTING, P/K	1	820045P
115	3513859	SCREW, FLTHD, 1.4x2.5	3	820064
117	3110500	PLATE, SPRING HOOK	1	820208
118	3110778	SPRING, COIL, TENSION	1	820239
164	3110540	RING, BALL RTNG/LOCKING	1	820203
166	3110542	RING, DIAPHRAGM TRANSFER	1	820202
167	3110543	RING, BALL RACE	1	820201
172	3512634	SCREW, PANHD, 1.7x2.0	2	820075
173	3110547	ARM, DIAPHRAGM COUPLING	1	820204
174	3110548	SCREW, SPRING POST	1	820207
178	3110552	MOUNT, P/K	1	820200
179	3110553	RING, REAR PROTECTIVE	1	820206
180	3110550	ARM, DIAPHRAGM TRANSFER	1	820205
200	3111006	ARM, APERTURE TRANSFER	1	820044
201	3107586	SCREW, FLTHD, 1.7x6.0, BLK	2	820106
218	3111029	PLATE, APERTURE STOP	1	820070
219	3111031	ARM, APERTURE COUPLING	1	820069

Parts List for Figure 8. Yashica/Contax Mount Assembly

Ref.	Vivitar Part No.	Description	Quantity	Part Code
99	3101573-1	SCREW, PANHD, 1.7x8.0, CHR	4	820074
111	3110492	RING, APERTURE SETTING, Y/CX	1	820045Y
112	3110498	RING, DIAPHRAGM TRANSFER	1	820229
113	3110499	LUG, MAX APERTURE	1	820260
114	3512974	SCREW, FLTHD, 1.4x2.0	2	820242
115	3513859	SCREW, FLTHD, 1.4x2.5	4	820064
116	3512171	SCREW, PANHD, 1.7x2.5	3	QS1725
117	3110500	PLATE, SPRING, HOOK	1	820208
118	3110778	SPRING, COIL, TENSION	1	820239
119	3110501	MOUNT, Y/CX	1	820258
120	3110502	ARM, DIAPHRAGM COUPLING	1	820257
121	3110503	RING, SHADE	1	820259
200	3111006	ARM, APERTURE TRANSFER	1	820044
201	3107586	SCREW, FLTHD, 1.7x6.0, BLK	2	820106
210	3111035	ARM, APERTURE COUPLING	1	820092
218	3111033	PLATE, APERTURE STOP	1	820087

Automatic Fixed Mount Lens
80-200mm f/4.5
Macro Focusing Zoom

COMPLETE PARTS LIST

Vivitar Part No.	Part Code	Description	Quantity						
			N	M	C	K	O	P	Y
3101573-1	820074	SCREW, PANHD, 1.7x8.0, CHR	4	4			4	4	4
3103774	QS1445	SCREW, FLTHD, 1.4x3.0		3					
3105725	Not Issued	SCREW, PANHD, 1.7x1.5	2	2	2	2	2	2	2
3106319	Not Issued	SCREW, PANHD, 1.7x3.5, BLK				4			
3107586	820106	SCREW, FLTHD, 1.7x6.0, BLK	2	2			2	2	2
3107738	Not Issued	SCREW, FLTHD, 1.7x1.3	2	2	2	2	2	2	2
3110411	820001	RING, NAME	1	1	1	1	1	1	1
3110412	820004	RING, 1ST ELEMENT RTNG	1	1	1	1	1	1	1
3110413	820G1	LENS ELEMENT, 1ST	1	1	1	1	1	1	1
3110414	820003	RING, SPACER, 1ST & 2/3RD ELEM	1	1	1	1	1	1	1
3110415	820G2/3	LENS DOUBLET, 2ND & 3RD ELEM	1	1	1	1	1	1	1
3110416	820002	HOUSING, FRONT LENS GROUP	1	1	1	1	1	1	1
3110417	820005	HELICOID, OUTER	1	1	1	1	1	1	1
3110418	820006	HELICOID, INNER	1	1	1	1	1	1	1
3110419	820071	SEAL, FELT	1	1	1	1	1	1	1
3110420	820007	TUBE, FOCUSING	1	1	1	1	1	1	1
3110421	820018-A	SCREW, ROLLER SHAFT	2	2	2	2	2	2	2
3110422	820018-B	ROLLER, CAM	2	2	2	2	2	2	2
3110423	820062	PLATE, COVER	2	2	2	2	2	2	2
3110424	820099	SETSCREW, 1.4x1.5	9	9	9	9	9	9	9
3110425	820063	GRIP, RUBBER	1	1	1	1	1	1	1
3110426	820014	RING, 4/5TH ELEMENTS RTNG	1	1	1	1	1	1	1
3110427	820G4/5	LENS DOUBLET, 4TH & 5TH ELEM	1	1	1	1	1	1	1
3110428	820G6	LENS ELEMENT, 6TH	1	1	1	1	1	1	1
3110429	820016	RING, ZOOM DRIVE	1	1	1	1	1	1	1
3110430	820013	ROLLER, FOCUSING STOP	1	1	1	1	1	1	1
3110431	820020	SPRING, MACRO SWITCH	1	1	1	1	1	1	1
3110432	820021-A	SCREW, ROLLER SHAFT	2	2	2	2	2	2	2
3110433	820021-B	ROLLER, CAM SLOT	2	2	2	2	2	2	2
3110434	820061	RING, TEFLON	1	1	1	1	1	1	1
3110435	820017	RING, ZOOM CONNECTING	1	1	1	1	1	1	1
3110436	820012	RING, FOCUS SCALE	1	1	1	1	1	1	1
3110437	820072	SEAL, FELT	1	1	1	1	1	1	1
3110438	820009	RING, FRONT ZOOM SLIDE	1	1	1	1	1	1	1
3110439	820010	TUBE, CAM SLOT	1	1	1	1	1	1	1
3110440	820024-A	SCREW, ROLLER SHAFT	2	2	2	2	2	2	2
3110441	820024-B	ROLLER, CAM SLOT	2	2	2	2	2	2	2
3110442	820101	HOUSING, 7/8TH ELEMENTS	1	1	1	1	1	1	1
3110443	820G7/8	LENS DOUBLET, 7TH & 8TH ELEM	1	1	1	1	1	1	1
3110444	820015	RING, 7/8TH ELEMENTS RTNG	1	1	1	1	1	1	1
3110445	820022	TUBE, ZOOM SCALE	1	1	1	1	1	1	1
3110446	820008	TUBE, MAIN BODY	1	1	1	1	1	1	1
3110447	820019	LUG, MACRO SWITCH	1	1	1	1	1	1	1
3110448	820032	RING, DIAPHRAGM BLADE RTNG	1	1	1	1	1	1	1
3110449	820030	BLADE, DIAPHRAGM	6	6	6	6	6	6	6
3110450	820034	RING, BLADE OPERATING	1	1	1	1	1	1	1
3110451	820057	SPRING, COIL, DIAPHRAGM	1	1	1	1	1	1	1
3110452	820033	RING, DIAPHRAGM BLADE	1	1	1	1	1	1	1
3110453	820025	HOUSING, DIAPHRAGM	1	1	1	1	1	1	1
3110454	820058	SPRING, COIL, TENSION	1	1	1	1	1	1	1
3110455	820048	PLATE, SPRING, HOOK	1	1	1	1	1	1	1
3110456	820053	SPRING, WIRE, DIAPHRAGM ACTUATOR	1	1	1	1	1	1	1
3110457	820059	PLATE, OPERATING RING STOP	2	2	2	2	2	2	2
3110458	820049	LEVER, DIAPHRAGM ACTUATOR	1	1	1	1	1	1	1
3110459	820054	PLATE, ADJUSTABLE	1	1	1	1	1	1	1
3110460	820050	SCREW, PIVOT, ACTUATOR LEVER	1	1	1	1	1	1	1
3110461	820037	RING, 9TH ELEMENT RTNG	1	1	1	1	1	1	1
3110462	820G9	LENS ELEMENT, 9TH	1	1	1	1	1	1	1
3110463	820047	RING, APERTURE CAM	1	1	1	1	1	1	1
3110464	820046	RING, RTNG, SPLIT	1	1	1	1	1	1	1

COMPLETE PARTS LIST, Continued

Vivitar Part No.	Part Code	Description	Quantity						
			N	M	C	K	O	P	Y
3110465	820039	RING, BALL RTNG	1	1	1	1	1	1	1
3110466	820036	RING, SPACER, G9/10	1	1	1	1	1	1	1
3110467	820G10	LENS ELEMENT, 10TH	1	1	1	1	1	1	1
3110468	820035	HOUSING, MASTER LENS GROUP	1	1	1	1	1	1	1
3110469	820043	ARM, DIAPHRAGM TRANSFER	1	1	1	1	1	1	1
3110470	820040	RING, DIAPHRAGM TRANSFER	1	1	1	1	1	1	1
3110471	820041	RING, BALL RTNG	1	1	1	1	1	1	1
3110472	820G11	LENS ELEMENT, 11TH	1	1	1	1	1	1	1
3110473	820038	RING, SPACER, G11/12	1	1	1	1	1	1	1
3110474	820G12	LENS ELEMENT, 12TH	1	1	1	1	1	1	1
3110475	820042	RING, 12TH ELEM RTNG	1	1	1	1	1	1	1
3110476	820027	RING, CONNECTING	1	1	1	1	1	1	1
3110477	820029	RING, FOCUSING ADJUSTMENT	1	1	1	1	1	1	1
3110478	820023	RING, ZOOM SCALE	1	1	1	1	1	1	1
3110479	820026	RING, INDEX	1	1	1	1	1	1	1
3110480	820028	FRAME, MOUNT	1	1	1	1	1	1	1
3110481	820112	SPRING, LEAF, DETENT	1	1	1	1	1	1	1
3110482	820255	SPRING, COIL, TENSION		1					
3110483	820243	LEVER I ASSY W/PINS		1					
3110484	820252	SPRING, WIRE, LEVER I		1					
3110485	820247	SCREW, PIVOT, LEVER I		1					
3110486	820261	BUSHING, ECCENTRIC		1					
3110487	820262	FRAME, MOUNT, M/MD		1					
3110488	820249	MOUNT, M/MD		1					
3110489	820254	LEVER II ASSY W/PIN		1					
3110490	820245	PLATE, LEVER II GUIDE		2					
3110491	820045M	RING, APERTURE SETTING, M/MD		1					
3110492	820045Y	RING, APERTURE SETTING, Y/CX							1
3110493	820045C	RING, APERTURE SETTING, C/FD			1				
3110494	820045O	RING, APERTURE SETTING, O/OM					1		
3110495	820045N	RING, APERTURE SETTING, N/AI	1						
3110496	820045P	RING, APERTURE SETTING, P/K						1	
3110497	820045K	RING, APERTURE SETTING, K/AR				1			
3110498	820229	RING, DIAPHRAGM TRANSFER							1
3110499	820260	LUG, MAX APERTURE							1
3110500	820208	PLATE, SPRING HOOK	1					1	1
3110501	820258	MOUNT, Y/CX							1
3110502	820257	ARM, DIAPHRAGM COUPLING							1
3110503	820259	RING, SHADE							1
3110504	820284	RING, BALL RTNG			1				
3110505	820281	RING, DIAPHRAGM TRANSFER			1				
3110506	820289	SCREW, DIAPHRAGM TRANSFER RING			1				
3110507	820294	SCREW, SPRING, POST			1				
3110508	820297	SPRING, COIL, APERTURE SIGNAL			1				
3110509	820282	RING, APERTURE SIGNAL TRANSFER			1				
3110510	820288	HOOK, SPRING			2				
3110511	820301	SPRING, WIRE, TRANSFER LOCK			1				
3110512	820290	PIN, DETENT, BREECHLOCK RING			1				
3110513	820300	SPRING, DETENT, BREECHLOCK RING			1				
3110514	820287	SCREW, MOUNT STOP			1				
3110515	820303	SCREW, STUD			1				
3110516	820283	RING, BREECHLOCK			1				
3110517	820286	LUG, BREECHLOCK STOP			1				
3110518	820302	SCREW, STUD, MAX APERTURE			1				
3110519	820280	MOUNT, CANON			1				
3110520	820285-1	RING, BALL RTNG			1				
3110521	820295	SCREW, STOP			2				
3110522	820291	PIN, EE SIGNAL			1				
3110523	820298	SPRING, COIL, TENSION			1				
3110524	820293	SCREW, SPRING, POST			1				

Automatic Fixed Mount Lens
80-200mm f/4.5
Macro Focusing Zoom

COMPLETE PARTS LIST, Continued

Vivitar Part No.	Part Code	Description	Quantity						
			N	M	C	K	O	P	Y
3110526	820223	SCREW, PIVOT, MANUAL LEVER					1		
3110527	820225	SPRING, WIRE					1		
3110528	820219	LEVER, MANUAL DIAPHRAGM					1		
3110529	820234	PLATE, LOCK RELEASE					1		
3110530	820233	BUTTON, LOCK RELEASE					1		
3110531	8207100	ARM, DIAPHRAGM COUPLING					1		
3110532	8207102	PIPE, SHADE					1		
3110533	8207015	RING, DIAPHRAGM TRANSFER					1		
3110534	820232	MOUNT, O/OM					1		
3110535	820241	SCREW, MOUNT STOP					1		
3110536	820226	BUTTON, MANUAL DIAPHRAGM					1		
3110537	820227	NUT, DIAPHRAGM BUTTON					1		
3110538	820228	PLATE, LEVER GUIDE					1		
3110539	820224	PIN, SPRING POST					1		
3110540	820203	RING, BALL RTNG/LOCKING	1					1	
3110541	8207096	ARM, DIAPHRAGM TRANSFER	1						
3110542	820202	RING, DIAPHRAGM TRANSFER	1					1	
3110543	820201	RING, BALL RACE	1					1	
3110544	820209	MOUNT, N/AI	1						
3110545	820074	SCREW, PANHD, 1.7x8.0, CHR	4					1	
3110546	8207097	RING, REAR PROTECTIVE	1						
3110547	820204	ARM, DIAPHRAGM COUPLING	1			1		1	
3110548	820207	SCREW, SPRING POST	1					1	
3110549	820090	LUG, MAX APERTURE	1						
3110550	820205	ARM, DIAPHRAGM TRANSFER						1	
3110552	820200	MOUNT, P/K						1	
3110553	820206	RING, REAR PROTECTIVE						1	
3110646	820103	SCREW, PANHD, 1.7x2.2, DETENT SPRING	1	1	1	1	1	1	1
3110648	Not Issued	SCREW, FLTHD, 1.7x3.2	1	1	1	1	1	1	1
3110650	Not Issued	SCREW, FLTHD, 1.4x3.4	3	3	3	3	3	3	3
3110773	8207086	SCREW, PANHD, 1.7x2.4	4	5			5	4	
3110775	820B2	SCREW, PANHD, 1.7x1.7x3.0			4				
3110777	820235	SPRING, DETENT					2		
3110778	820239	SPRING, COIL, TENSION	1				1	1	1
3110780-1	820013A	SCREW, MOUNT STOP	1						
3110781	820264	RING, BALL RTNG				1			
3110782	820266	PLATE, AE LATCH				1			
3110783	820267	SPRING, COIL, TENSION				1			
3110784	820268	PLATE, SPRING HOOK				1			
3110785	820275	FRAME, MOUNT				1			
3110786	820276	RING, DIAPHRAGM TRANSFER				1			
3110787	820273	LUG, AE SWITCH				1			
3110788	820274	MOUNT, KONICA				1			
3110789	820269	BUTTON, AE LATCH				1			
3110790	820084	PLATE, APERTURE TRANSFER				1			
3110791	820085	ARM, APERTURE TRANSFER				1			
3110792	Not Issued	SCREW, PANHD, 1.4x1.2x2.4	2	2	2	2	2	2	2
3110793	Not Issued	SETSCREW, 1.7x1.6	3	3	3	3	3	3	3
3110794	Not Issued	SPRING, COIL, DETENT, 1.5x2.7	1	1	1	1	1	1	1
3110796	Not Issued	SCREW, FLTHD, 1.4x1.3, CHR				2			
3110797	Not Issued	SCREW, PANHD, 1.7x11.0, BLK			4				
3110798	Not Issued	SCREW, PANHD, 1.7x2.0x3.0	4	4	4	4	4	4	4
3110973	820099-1	SCREW, PANHD, 1.4x2.0			2				
3110974	820304	SCREW, STUD			1				
3111006	820044	ARM, APERTURE TRANSFER	1	1			1	1	1
3111007	820076	PLATE, APERTURE STOP	1						
3111009	820Coupler	SCREW, COUPLING FORK	2						
3111010	820077	FORK, METER COUPLING	1						
3111012	820087	PLATE, APERTURE STOP	1						
3111013	Not Issued	RING, SHADE		1					

COMPLETE PARTS LIST, Continued

Vivitar Part No.	Part Code	Description	Quantity						
			N	M	C	K	O	P	Y
3111014	820067	SPRING, LEAF, DETENT			1				
3111015	820296	BUTTON, EE LATCH RELEASE			1				
3111016	820299	SPRING, COIL, DETENT			1				
3111017	820073	PLATE, APERTURE TRANSFER			1				
3111019	820292	PLATE, EE ACTUATOR			1				
3111021	820074-1	ARM, DIAPHRAGM TRANSFER			1				
3111023	Not Issued	RING, SHADE				1			
3111027	820078	ARM, APERTURE COUPLING					1		
3111029	820070	PLATE, APERTURE STOP						1	
3111031	820069	ARM, APERTURE COUPLING						1	
3111033	820087	PLATE, APERTURE STOP							1
3111035	820092	ARM, APERTURE COUPLING							1
3512171	820074-A	SCREW, PANHD, 1.7x2.5				4			
3512544	Not Issued	SETSCREW, 1.4x2.5, BLK	3	3	3	3	3	3	3
3512602	Not Issued	SCREW, FLTHD, 1.7x3.0, BLK					4	4	
3512626	820096	SCREW, FLTHD, 1.4x1.5	2						
3512634	820075	SCREW, PANHD, 1.7x2.0	2					2	
3512899	8201.2	BALL, STEEL, 1.2	101	101	230	230	101	101	101
3512974	QS1425	SCREW, FLTHD, 1.4x2.0	3	3	3	3	3	3	5
3512984	Not Issued	SCREW, PANHD, 1.4x1.8	3	3	3	3	3	3	3
3512990	820B1	SCREW, PANHD, 1.4x2.5			4				
3513028	Not Issued	SCREW, PANHD, 1.4x3.0	3	3	3	3	3	3	3
3513041	Not Issued	BALL, STEEL, 1.5	1	1	1	1	1	1	1
3513042	820084	SCREW, FLTHD, 1.4x2.5				3	6		
3513062	Not Issued	SCREW, FLTHD, 1.7x3.0	4	4	4	4	4	4	4
3513859	820064	SCREW, FLTHD, 1.4x2.5	4	2	4	3	3	3	3
3515264	Not Issued	SETSCREW, 1.4x1.0	3	3	3	3	3	3	3
3516036	B2	BALL, STEEL, 2.0			1				



Prepared by:
Service Engineering Div.,

Vivitar Corporation
Corporate Offices:
1630 Stewart Street, Santa Monica, Ca 90406

Printed in U.S.A.

Vivitar is an International Trademark of Vivitar Corporation