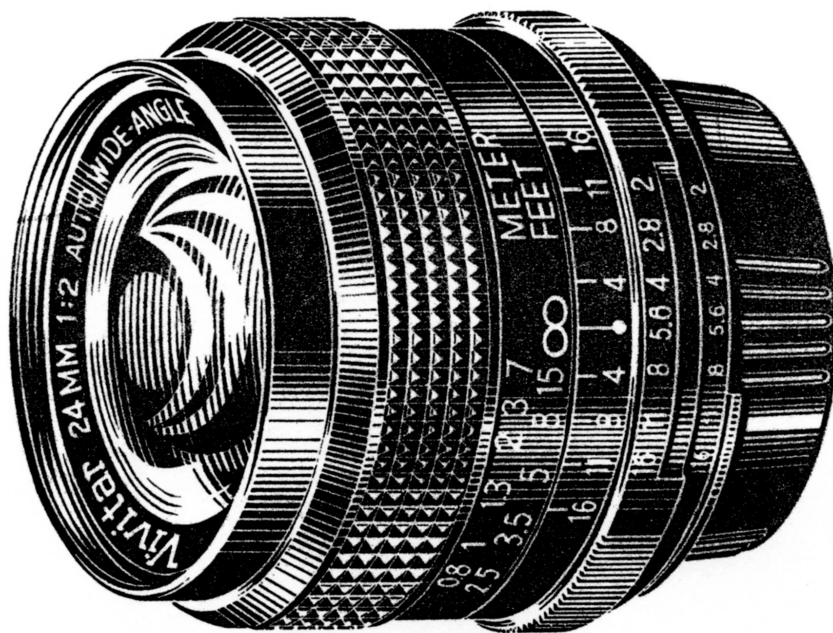


Vivitar

Illustrated Parts List



Automatic Fixed Mount Lens 24mm f/2.0 Compact

Publication No. 3746113 / March 1979

HOW TO USE THIS PUBLICATION

HOW TO FIND PART ORDER NUMBERS

Parts are illustrated on exploded drawings where each part is identified by a reference number or designator. These reference numbers appear in sequence in the parts lists where they are cross-referenced to the part numbers and descriptions.

When the initials **NAS** appear at a part entry, that part is Not Available Separately, and can be obtained only by ordering the assembly containing it. The part of that assembly may be shown immediately to the right on the same line, in an "Included in Assembly" column, or at the end of the parts list(s).

In parts lists for lens items, quantities of each item are listed as used in the different lens mounts. The mounts are referred to as:

U	=	Vivitar-Universal Thread Mount	K	=	Konica Autoreflex Series Mounts
N	=	Nikon Mounts	O	=	Olympus OM Series Mount
M	=	Minolta Mounts	P	=	Pentax K Mounts
C	=	Canon Mounts			

Note that many parts are common to more than one mount. This commonality is shown in the parts lists so that service centers desiring to stock replacement parts can order economically.

CAUTION

This publication is intended for use by persons having skills and equipment needed to service the subject product(s) safely and correctly. Users are cautioned that special tools and/or test equipment may be required for proper disassembly, reassembly, alignment or adjustment or damage to the product may result.

NOTE

All dimensions are in millimeters unless otherwise specified.

Notice: Information contained herein is subject to change without notice.

HOW TO ORDER PARTS

Please furnish the model number and serial number of the product for which parts are being ordered. For each part requested, please supply part order number, description, and required quantity. Mail or phone parts orders to:

**Vivitar Central Parts Service
2700 Pennsylvania Avenue
Santa Monica, California 90406**

**Telephone: (213) 829-3672
or (213) 870-0181**

LIST OF ILLUSTRATIONS

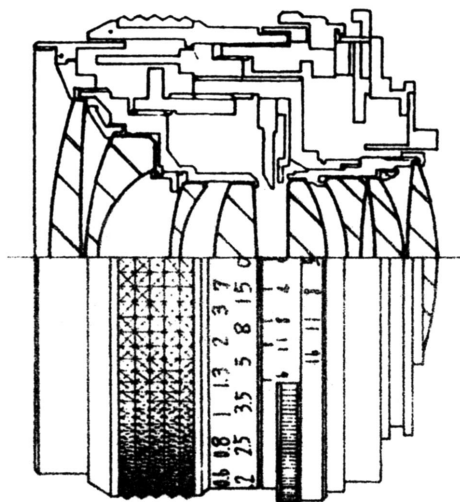
<u>Figure</u>	<u>Title</u>	<u>Page</u>
1	Universal Thread Mount Configuration	2
2	Diaphragm Housing Assembly, Universal Mount	4
3	Diaphragm Housing Assembly, Nikon AI Mount	5
4	Nikon/Nikkormat, AI Mount Configuration	6
5	Minolta MD/SRT/SR Mount Configuration	8
6	Diaphragm Housing Assembly, Minolta Mount	10
7	Diaphragm Housing Assembly, Canon Mount	11
8	Canon FL/FD Mount Configuration	12
9	Konica Autoreflex Mount Configuration	14
10	Diaphragm Housing Assembly, Konica Mount	16
11	Diaphragm Housing Assembly, Olympus Mount	17
12	Olympus OM Mount Configuration	18
13	Pentax K/M Mount Configuration	20
14	Diaphragm Housing Assembly, Pentax K/M Mount	22
15	First Lens Group Assembly	23
16	Second Lens Group Assembly	24
17	Helicoid Assembly Critical Dimensions, Universal Mount	25
18	Helicoid Assembly Critical Dimensions, Nikon AI Mount	26
19	Helicoid Assembly Critical Dimensions, Minolta Mount	26
20	Helicoid Assembly Critical Dimensions, Canon Mount	26
21	Helicoid Assembly Critical Dimensions, Konica Mount	27
22	Helicoid Assembly Critical Dimensions, Olympus Mount	27
23	Helicoid Assembly Critical Dimensions, Pentax K Mount	27

VIVITAR AUTOMATIC FIXED MOUNT LENS 24mm f/2.0 COMPACT

IDENTIFICATION AND MOUNT CONFIGURATION

These lenses are furnished in seven mount configurations as follows:

Mount	Vivitar Stock No.	Vivitar Part No.
Vivitar-Universal Thread Mount	0210609	3900001-220
Minolta MD/SRT/SR Series Mount	0210610	3900002-220
Canon FL/FD Series Mount	0210621	3000003-220
Nikon/Nikkormat AI and F Series Mounts	0210632	3000004-220
Konica Autoreflex Series Mount	0210643	3900005-220
Olympus OM Series Mount	0210654	3900006-220
Pentax K and M Series Mounts	0210665	3900007-220



GENERAL SPECIFICATIONS

Construction	eight elements (air spaced)
Angle of Acceptance	84 degrees
Aperture Range	f/2.0 to f/16
Minimum Focusing Distance From Film Plane	31cm (12.2 in.)
Weight	264 g (9.3 oz.)
Length at Infinity	46mm (1.8 in.)
Maximum Barrel Diameter	64mm (2.5 in.)
Accessory Size	55mm

See Page 25 for service notes.

**Automatic Fixed Mount Lens
24mm f/2.0 Compact**

For Exploded View
See Fig. 15, Pg 23

For Exploded View
See Fig. 2, Pg 4

For Exploded View
See Fig. 16, Pg 24

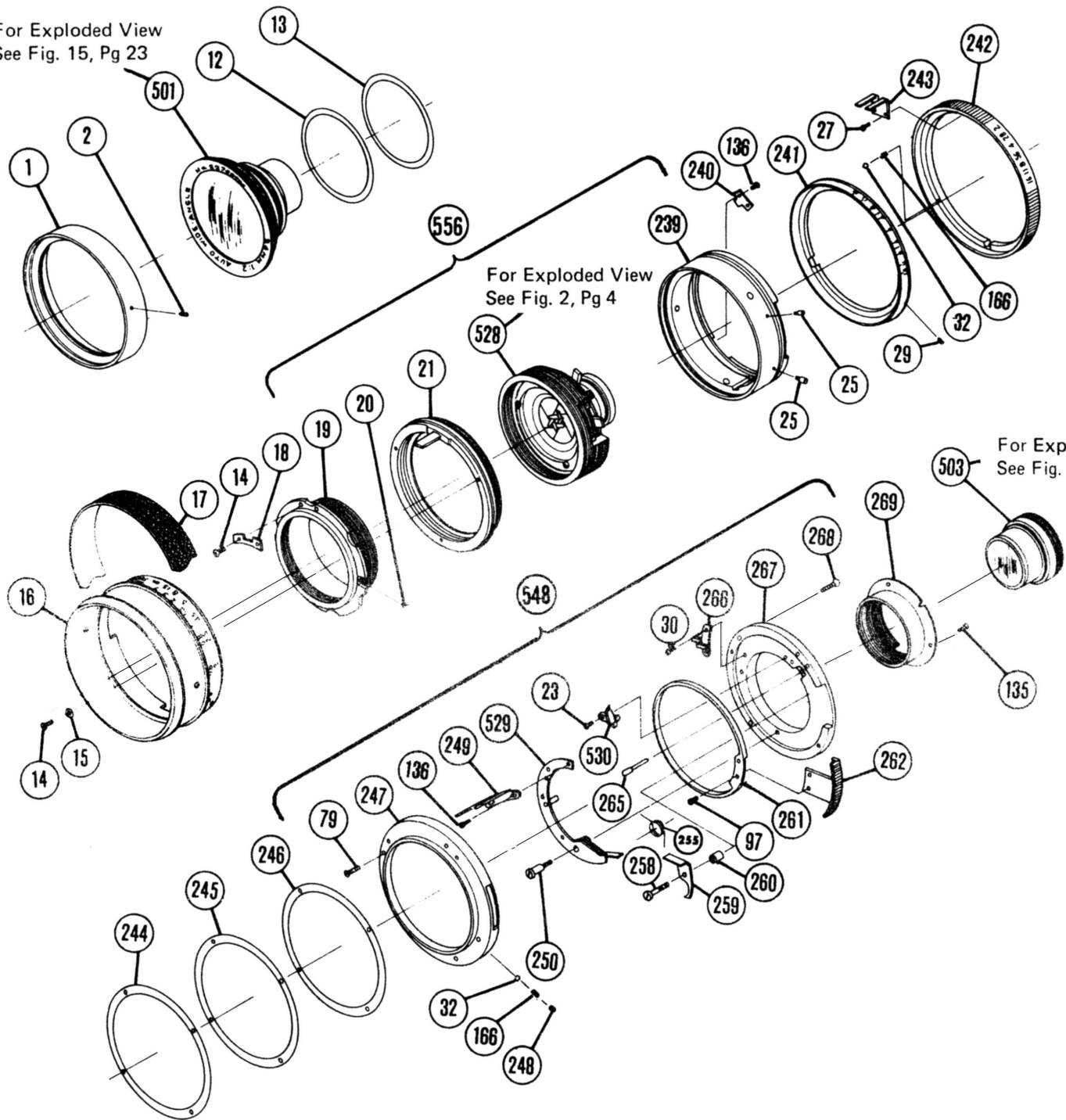


Figure 1. Universal Thread Mount Configuration

Parts List For Figure 1. Universal Thread Mount

Ref.	Vivitar Part No.	Description	Part Code		Quantity
1	3102835	RING, FILTER	V42001	770718	1
2	3513843	SETSCREW, 1.4x2.0	Z75918	B760520	5
12	3102846	SHIM, 0.2	V82901	770718	A/R
13	3102847	SHIM, 0.1	V82903	770718	A/R
14	3512980	SCREW, PANHD, 1.7x3.0	Z75913	B760520	5
15	3512870	WASHER, 1.7x3.5x0.4	Z75942	760520	3
16	3102848	RING, FOCUSING	V42007	770718	1
17	3102849	GRIP, FOCUSING	V82005	770718	1
18	3102850	PLATE, GUIDE	V82701	770718	1
19	*3102851	HELICOID, INNER	V82007	770718	1
20	3513886	SETSCREW, 1.7x2.5	Z75900	B760520	1
21	*3102852	HELICOID, OUTER	V82011	770718	1
23	3513725	SCREW, PANHD, 1.4x2.5x2.3, BLK	Z85910	B760615	4
25	3102855	SCREW, STOP	V82905	770718	2
27	3512984	SCREW, PANHD, 1.4x1.5x2.0	Z75922	B760520	2
29	3512988	SETSCREW, 1.4x2.5	W25903	B76017	3
30	3512990	SCREW, PANHD, 1.4x1.5x2.0	Z75952	B760520	2
32	3512898	BALL, STEEL, 1.6	Z75919	760520	2
79	3103774	SCREW, FLTHD, 1.4x3.0x2.0	Z75968	B760520	3
97	3512974	SCREW, FLTHD, 1.4x2.0x2.0	Z75912	B760520	2
135	3513859	SCREW, FLTHD, 1.4x2.5x2.0	Z75963	B760520	3
136	3512986	SCREW, PANHD, 1.4x2.0x1.8	Z75926	B760520	4
166	3512857	SPRING, DETENT, 1.5x4.0	Z75920	760520	2
239	*3102975	FRAME, HELICOID, U MT	V82067	770718	1
240	3102976	PLATE, STOP	V82752	770718	1
241	3102977	RING, DEPTH OF FIELD, U MT	V82066	770718	1
242	3102978	RING, APERTURE SETTING, U MT	V82068	770718	1
243	3102979	FORK, APERTURE SETTING	V82747	770718	1
244	3102980	SHIM, FOCUS, 0.5, U MT	V82753	770718	A/R
245	3102981	SHIM, FOCUS, 0.2, U MT	V82941	770718	A/R
246	3102982	SHIM, FOCUS, 0.1, U MT	V82943	770718	A/R
247	3102983	RING, MOUNT FRAME	V82069	770718	1
248	3102984	SETSCREW, 2.0x2.0	Z75910	B760720	1
249	3102985	FORK, DIAPHRAGM CONTROL	V82750	770718	1
250	3102986	SCREW, PIVOT, DIAPHRAGM LEVER	W25907	760817	1
255	3102987	SPRING, WIRE	W25906	760817	1
258	3102988	SCREW, PIVOT, TRANSFER LEVER	W25908	760817	1
259	3102989	LEVER, AUTO DIAPHRAGM TRANSFER	W25710	760817	1
260	3102990	BUSHING, PIVOT SCREW	W25804	760817	1
261	3102991	RING, AUTO/MANUAL SELECT	W25518	760817	1
262	3102992	LEVER, AUTO/MANUAL SELECT	V82070	770718	1
265	3102993	PIN, DIAPHRAGM CONTROL COUPLING	Z38801	761025	1
266	3102994	GUIDE	V82751	770718	1
267	3102995	MOUNT, U/M-42	V82071	770718	1
268	3101573	SCREW, PANHD, 1.7x7.5x0.5	K24968	B770720	4
269	3102996	PIPE, SHADE, U MT	V42019	770718	1
501	3103001	LENS GROUP ASSY, 1ST	V42U50	N770718	1
503	3103003	LENS GROUP ASSY, 2ND	V42F51	N770718	1
528	3103028	DIAPHRAGM HOUSING ASSY, UNIV	V42U66	N770718	1
529	3103029	ARM, DIAPHRAGM CONTROL TRANSFER	V42U67	N770718	1
530	3103030	CRANK, AUTO DIAPHRAGM TRANSFER	W25U81	N760817	1
548	3103410	MOUNT ASSY, 24mm f/2.0 COMPACT, UNIV	V42U91	N720718	1
556	3103582	HELICOID ASSY, UNIV	V82U62	N720718	1

*Not Available Separately.

Automatic Fixed Mount Lens
24mm f/2.0 Compact

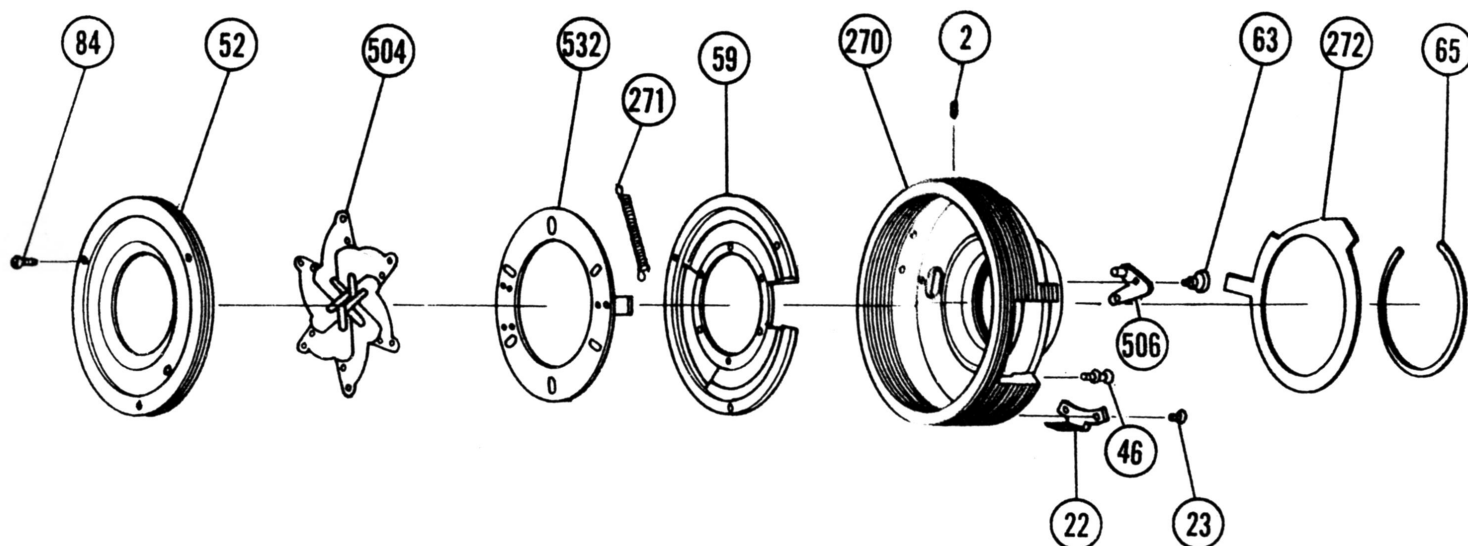


Figure 2. Diaphragm Housing Assembly, Universal Mount

NOTES

Illustrated for parts identification only. Not available as an assembly. Diaphragm housing (Ref 270) is not available separately. Order Helicoid Assembly, Part No. 3103582.

Parts List for Figure 2

Ref.	Vivitar Part No.	Description	Part Code		Quantity
2	3513843	SETSCREW, 1.4x2.0	Z75918	B760520	3
22	3102853	GUIDE, HELICOID	V82702	770718	1
23	3513725	SCREW, PANHD, 1.4x2.5x2.3, BLK	Z85910	B760615	2
46	3512835	SCREW, SPRING POST	Z75914	760520	1
52	3102865	RING, BLADE RETAINER	V82008	770718	1
59	3102866	RING, DIAPHRAGM BLADE	V82009	770718	1
63	3102867	SCREW, SHOULDER	V82904	770718	1
65	3102869	RING, RETAINING, EXT	V82709	770718	1
84	3102881	SCREW, PANHD, 1.4x3.6x2.0	V82911	B770718	3
270	*3102997	HOUSING, DIAPHRAGM, U MT	V82065	770718	1
271	3102998	SPRING, COIL, TENSION	V82946	770718	1
272	3102999	CAM, APERTURE LIMIT	V82748	770718	1
504	3103004	BLADE, DIAPHRAGM	V42F71	N770718	6
506	3103006	CRANK, CAM FOLLOWER	V42F73	N770718	1
532	3103065	RING, BLADE OPERATING	V42U89	N770718	1

*Not Available Separately.

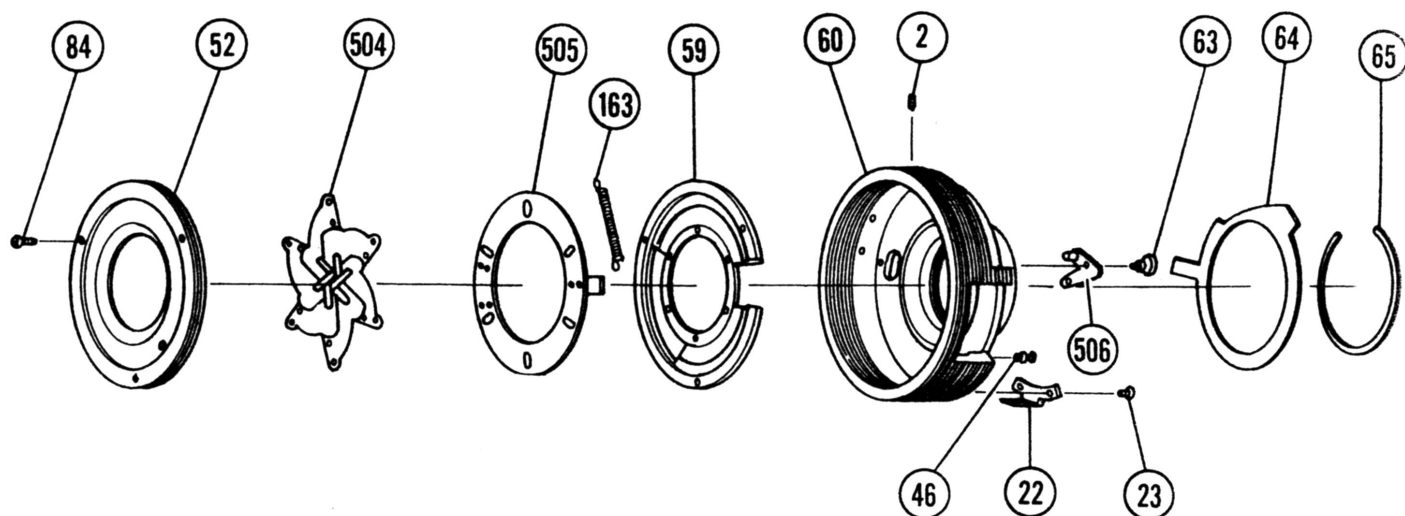


Figure 3. Diaphragm Housing Assembly, Nikon AI Mount

NOTE

Illustrated for parts identification only. Not available as an assembly. Diaphragm housing (Ref. 60) is not available separately. Order Helicoid Assembly, Part No. 3103576.

Parts List for Figure 3

Ref.	Vivitar Part No.	Description	Part Code		Quantity
2	3102836	SETSCREW, 1.4x2.0	Z75918	B760520	2
22	3102853	GUIDE, HELICOID	V82702	770718	1
23	3513725	SCREW, PANHD, 1.4x2.5x2.3, BLK	Z85910	B760615	2
46	3512835	SCREW, SPRING POST	Z75914	760520	1
52	3102865	RING, BLADE RETAINER	V82008	770718	1
59	3102866	RING, DIAPHRAGM BLADE	V82009	770718	1
60	*3103068	HOUSING, DIAPHRAGM, N/AI	V82010	771224	1
63	3102867	SCREW, SHOULDER	V82904	770718	1
64	3102868	CAM, APERTURE, C/FL, N/AI	V82708	770708	1
65	3102869	RING, RETAINING, EXT	V82709	770718	1
84	3102881	SCREW, PANHD, 1.4x3.6x2.0	V82911	B770718	3
163	3102915	SPRING, COIL, TENSION	V82912	770718	1
504	3103004	BLADE, DIAPHRAGM	V42F71	N770718	6
505	3103005	RING, BLADE OPERATING	V42F72	N770718	1
506	3103006	CRANK, CAM FOLLOWER	V42F73	N770718	1

*Not Available Separately.

**Automatic Fixed Mount Lens
24mm f/2.0 Compact**

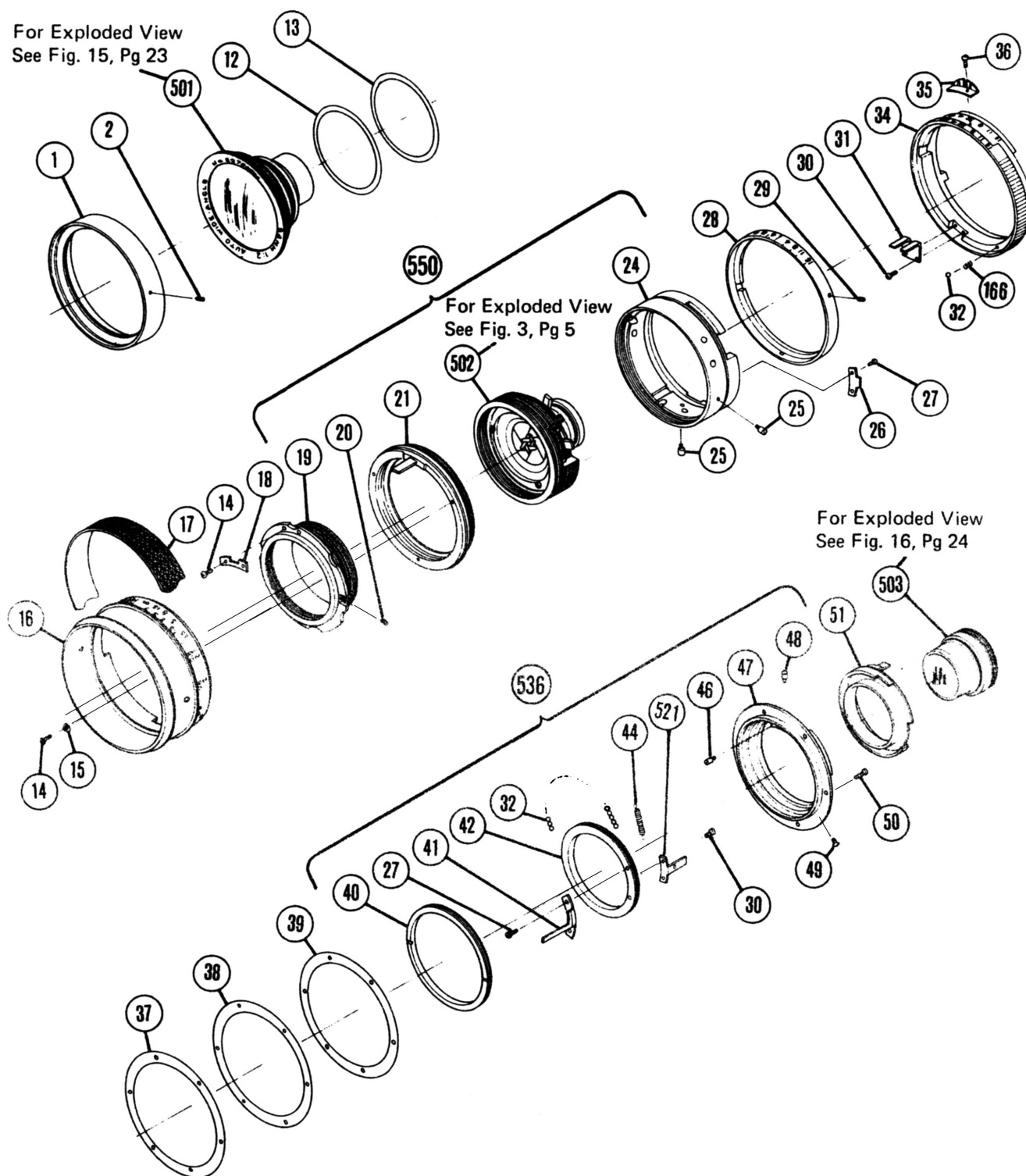


Figure 4. Nikon/Nikkormat, AI Mount Configuration

Parts List for Figure 4. Nikon/Nikkormat, AI Mount

Ref.	Vivitar Part No.	Description	Part Code		Quantity
1	3102835	RING, FILTER	V42001	770718	1
2	3513843	SETSCREW, 1.4x2.0	Z75918	B760520	2
12	3102846	SHIM, 0.2	V82901	770718	A/R
13	3102847	SHIM, 0.1	V82903	770718	A/R
14	3512980	SCREW, PANHD, 1.7x3.0x3.0	Z75913	B760520	5
15	3512870	WASHER, 1.7x3.5x0.4	Z75942	760520	3
16	3102848	RING, FOCUSING	V42007	770718	1
17	3102849	GRIP, FOCUSING	V82005	770718	1
18	3102850	PLATE, GUIDE	V82701	770718	1
19	*3102851	HELICOID, INNER	V82007	770718	1
20	3512886	SETSCREW, 1.7x2.5	Z75900	B760520	1
21	*3102852	HELICOID, OUTER	V82011	770718	1
24	*3102854	FRAME, HELICOID, NIKON	V82012	770718	1
25	3102855	SCREW, STOP	V82905	770718	2
26	3102856	PLATE, STOP	V82711	770718	2
27	3512984	SCREW, PANHD, 1.4x1.5x2.0	Z75922	B760520	2
28	3102857	RING, DEPTH OF FIELD, NIKON	V82013	770718	1
29	3512988	SETSCREW, 1.4x2.5	W25903	B76017	3
30	3512990	SCREW, PANHD, 1.4x1.5x2.0	Z75952	B760520	2
31	3102858	FORK, APERTURE SETTING	V82710	770718	1
32	3512898	BALL, STEEL, 1.6	Z75919	760520	60
34	3102859	RING, APERTURE SETTING, NIKON	V82014	770718	1
35	3518107	FORK, METER COUPLING	Z75747	770520	1
36	3518108	SCREW, METER COUPLING FORK	Z15917	770520	1
37	3102861	RING, MOUNT SUPPORT	V82712	770718	1
38	3101601	SHIM, FOCUS, 0.2	V82907	770718	A/R
39	3101602	SHIM, FOCUS, 0.1	V82906	770718	A/R
40	3101603	RING, BALL RTNG	V82015	770718	1
41	3102862	ARM, DIAPHRAGM CONTROL	V82713	771224	1
42	3102863	RING, DIAPHRAGM CONTROL TRANSFER	V82016	770718	1
44	3101606	SPRING, COIL, TENSION	V82910	770110	1
46	3512835	SCREW, SPRING POST	Z75914	760520	1
47	3101607	MOUNT, NIKON AI	V82017	770718	1
48	3512825	SCREW, SPECIAL HEAD	Z75934	W760520	1
49	3513901	SCREW, COUNTERSUNK, 1.4x2.0, CHROME	Z75963	W760520	2
50	3101608	SCREW, PANHD, 1.7x2.5	V82909	W770718	5
51	3100864	PIPE, SHADE	V42008	770717	1
166	3512857	SPRING, DETENT, 1.5x4.0	Z75920	760520	2
501	3103001	LENS GROUP ASSY, 1ST	V42U50	N770718	1
502	3103002	DIAPHRAGM HOUSING ASSY, NIKON	V42F60	N770718	1
503	3103003	LENS GROUP ASSY, 2ND	V42F51	N770718	1
531	3103020	ARM, DIAPHRAGM CONTROL TRANSFER	V42F87	N770718	1
536	3103398	MOUNT ASSY, 24mm f/2.0 COMPACT, N/AI	V42M91	N770718	1
550	3103576	HELICOID ASSY, N/AI	V82M62	N770718	1

*Not Available Separately.

Automatic Fixed Mount Lens
24mm f/2.0 Compact

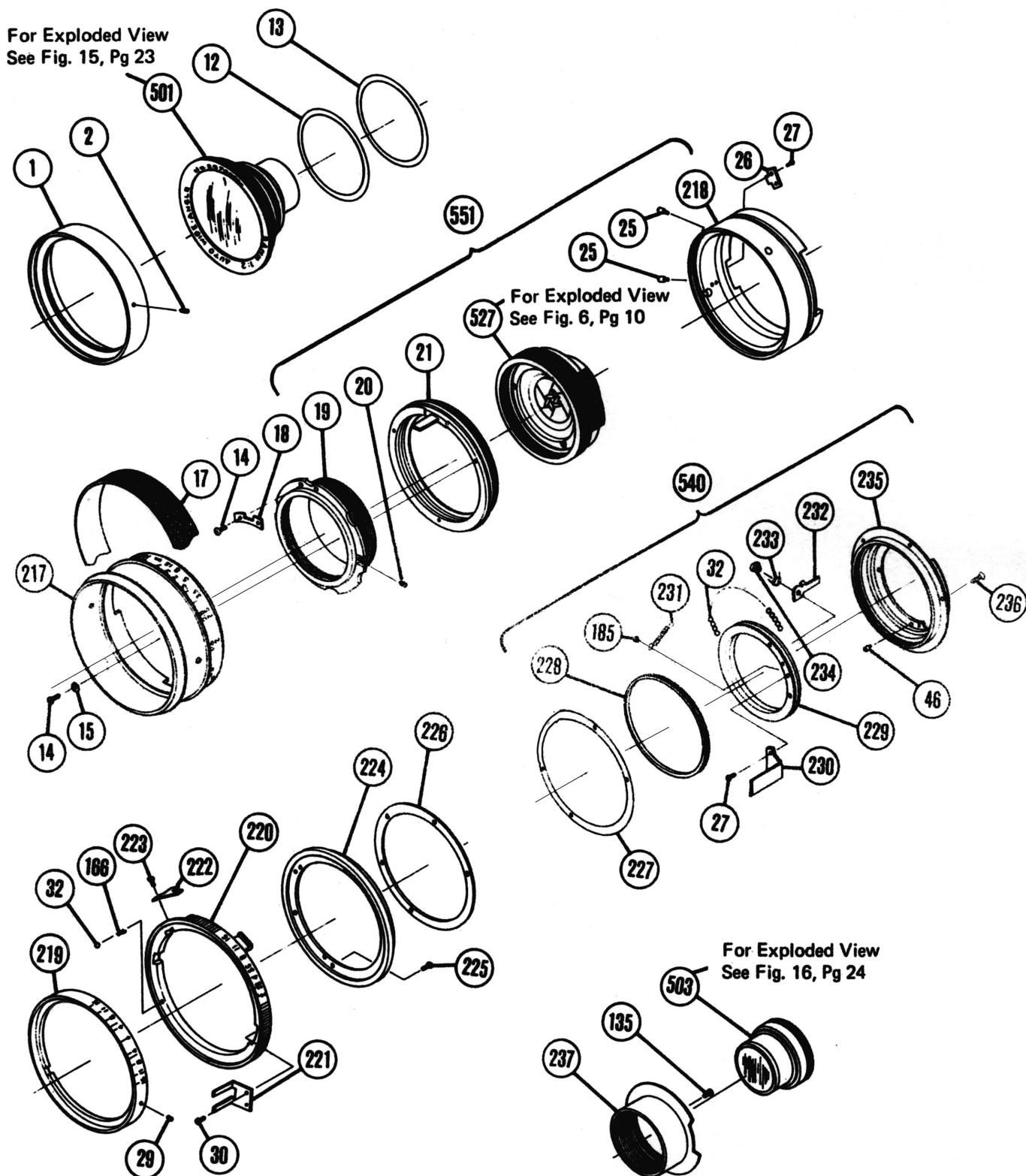


Figure 5. Minolta MD/SRT/SR Mount Configuration

Automatic Fixed Mount Lens
24mm f/2.0 Compact

Parts List for Figure 5. Minolta MD/SRT/SR Mount Configuration

Ref.	Vivitar Part No.	Description	Part Code		Quantity
1	3102835	RING, FILTER	V42001	770718	1
2	3513843	SETSCREW, 1.4x2.0	Z75918	B760520	5
12	3102846	SHIM, 0.2	V82901	770718	A/R
13	3102847	SHIM, 0.1	V82903	770718	A/R
14	3512980	SCREW, PANHD, 1.7x3.0x3.0	Z75913	B760520	5
15	3512870	WASHER, 1.7x3.5x0.4	Z75942	760520	3
17	3102849	GRIP, FOCUSING	V82005	770718	1
18	3102850	PLATE, GUIDE	V82701	770718	1
19	*3102851	HELICOID, INNER	V82007	770718	1
20	3512886	SETSCREW, 1.7x2.5	Z75900	B760520	1
21	*3102852	HELICOID, OUTER	V82011	770718	1
25	3102855	SCREW, STOP	V82905	770718	2
26	3102856	PLATE, STOP	V82711	770718	2
27	3512984	SCREW, PANHD, 1.4x1.5x2.0	Z75922	B760520	2
28	3512988	SETSCREW, 1.4x2.5	W25903	B76017	3
30	3512990	SCREW, PANHD, 1.4x1.5x2.0	Z75952	B760520	2
32	3512898	BALL, STEEL, 1.6	Z75919	760520	78
46	3512835	SCREW, SPRING POST	Z75914	760520	2
135	3513859	SCREW, FLTHD, 1.4x2.5x2.0	Z75963	B760520	3
166	3512857	SPRING, DETENT, 1.5x4.0	Z75920	760520	2
185	3101633	SCREW, SPRING POST	W25932	760817	1
217	3102954	RING, FOCUSING, MINOLTA	V42017	770718	1
218	*3102955	FRAME, HELICOID, MINOLTA	V82059	770718	1
219	3102956	RING, DEPTH OF FIELD, MINOLTA	V82058	770718	1
220	3102957	RING, APERTURE SETTING, MINOLTA	V82060	770718	1
221	3102958	FORK, APERTURE SETTING, MINOLTA	V82744	770718	1
222	3102959	LUG, APERTURE COUPLING, MINOLTA	V82746	770718	1
223	3101632	SCREW, PANHD, 1.4x2.2x3.0	Z15921	771215	1
224	3102960	RING, APERTURE	V82061	770718	1
225	3142961	SCREW, FLTHD, 1.4x2.2x3.0	K90910	B761210	3
226	3102962	SHIM, FOCUS, MINOLTA, 0.2	V82938	770718	A/R
227	3102963	SHIM, FOCUS, MINOLTA, 0.1	V82940	770718	A/R
228	3102964	RING, BALL	K24021	770720	1
229	3102965	RING, DIAPHRAGM CONTROL TRANSFER	V82062	770718	1
230	3102966	ARM, DIAPHRAGM CONTROL	V82742	770718	1
231	3102967	SPRING, COIL, TENSION, 2.0x5.0	V82937	770718	1
232	3102968	ARM, DIAPHRAGM CONTROL COUPLING	V82745	770718	1
233	3102969	SPRING, DIAPHRAGM ARM	V82936	770718	1
234	3102970	SCREW, SPRING RING	V82935	770718	1
235	3102971	MOUNT, MINOLTA MD	V82063	770718	1
236	3512933	SCREW, PANHD, 1.7x5.5x2.9	Z75986	W760520	5
237	3102973	PIPE, SHADE	V42018	770718	1
501	3103001	LENS GROUP ASSY, 1ST	V42U50	N770718	1
503	3103003	LENS GROUP ASSY, 2ND	V42F51	N770718	1
527	3103027	DIAPHRAGM HOUSING ASSY, MINOLTA	V42M65	N770718	1
540	3103402	MOUNT ASSY, 24mm f/2.0 COMPACT, M/MD	V42F91	N770718	1
551	3103577	HELICOID ASSY, M/MD	V82F62	N770718	1

*Not Available Separately.

**Automatic Fixed Mount Lens
24mm f/2.0 Compact**

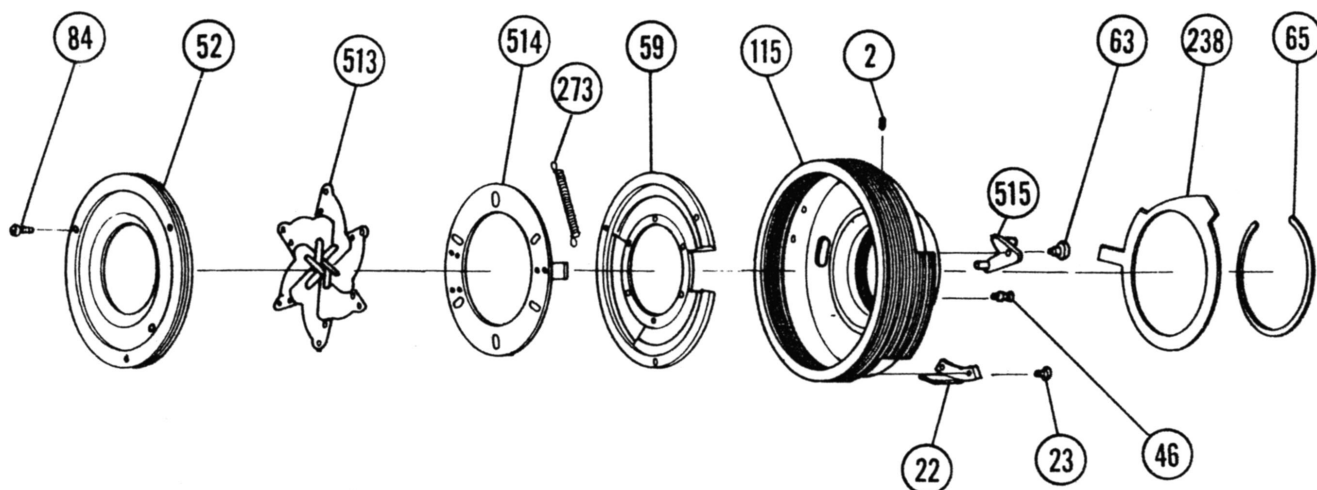


Figure 6. Diaphragm Housing Assembly, Minolta Mount

NOTE

Illustrated for parts identification only. Not available as an assembly. Diaphragm housing (Ref. 115) is not available separately. Order Helicoid Assembly, Part No. 3103577.

Parts List for Figure 6

Ref.	Vivitar Part No.	Description	Part Code		Quantity
2	3513843	SETSCREW, 1.4x2.0	Z75918	B760520	2
22	3102853	GUIDE, HELICOID	V82702	770718	1
23	3513725	SCREW, PANHD, 1.4x2.5x2.3, BLK	Z85910	B760615	2
46	3512835	SCREW, SPRING POST	Z75914	760520	1
52	3102865	RING, BLADE RETAINER	V82008	770718	1
59	3102866	RING, DIAPHRAGM BLADE	V82009	770718	1
63	3102867	SCREW, SHOULDER	V82904	770718	1
65	3102869	RING, RETAINING, EXT	V82709	770718	1
84	3102881	SCREW, PANHD, 1.4x3.6x2.0	V82911	B770718	3
115	*3102884	HOUSING, DIAPHRAGM, M, C, P	V82023	770718	1
238	3102974	CAM, APERTURE LIMIT	V82743	770718	1
273	3103000	SPRING, COIL, TENSION	V82946	770718	1
513	3103013	BLADE, DIAPHRAGM	V42C76	N770718	6
514	3103067	RING, BLADE OPERATING	V42C75	N770718	1
515	3103014	CRANK, CAM FOLLOWER	V42C74	N770718	1

*Not Available Separately.

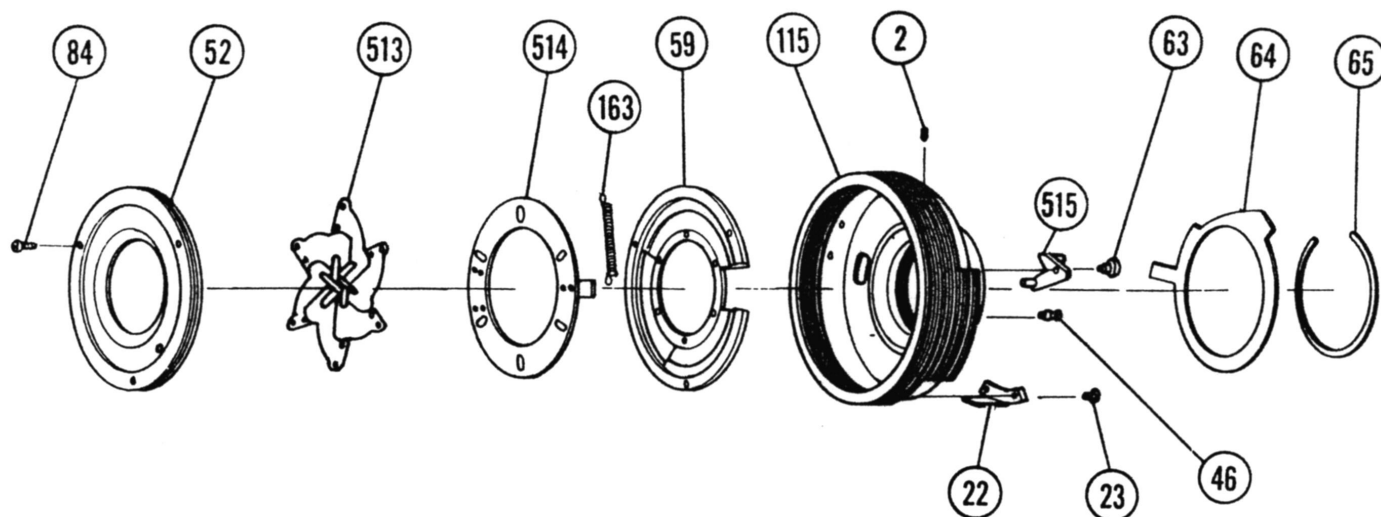


Figure 7. Diaphragm Housing Assembly, Canon Mount

NOTE

Illustrated for parts identification only. Not available as an assembly. Diaphragm housing (Ref. 115) is not available separately. Order Helicoid Assembly, Part No. 3103578.

Parts List for Figure 7

Ref.	Vivitar Part No.	Description	Part Code		Quantity
2	3102836	SETSCREW, 1.4x2.0	Z75918	B760520	2
22	3102853	GUIDE, HELICOID	V82702	770718	1
23	3513725	SCREW, PANHD, 1.4x2.5x2.3, BLK	Z85910	B760615	2
46	3512835	SCREW, SPRING POST	Z75914	760520	1
52	3102865	RING, BLADE RTNR	V82008	770718	1
59	3102866	RING, DIAPHRAGM BLADE	V82009	770718	1
63	3102867	SCREW, SHOULDER	V82904	770718	1
64	3102868	CAM, APERTURE, C/FL, N/AI	V82708	770718	1
65	3102869	RING, RETAINING, EXT	V82709	770718	1
84	3102881	SCREW, PANHD, 1.4x3.6x2.0	V82911	B770718	3
115	*3102884	HOUSING, DIAPHRAGM, M, C, P	V82023	770718	1
163	3102915	SPRING, COIL, TENSION	V82912	770718	1
513	3103013	BLADE, DIAPHRAGM	V42C76	N770718	6
514	3103067	RING, BLADE OPERATING	V42C75	N770718	1
515	3103014	CRANK, CAM FOLLOWER	V42C74	N770718	1

*Not Available Separately.

Automatic Fixed Mount Lens 24mm f/2.0 Compact

For Exploded View
See Fig. 15, Pg 23

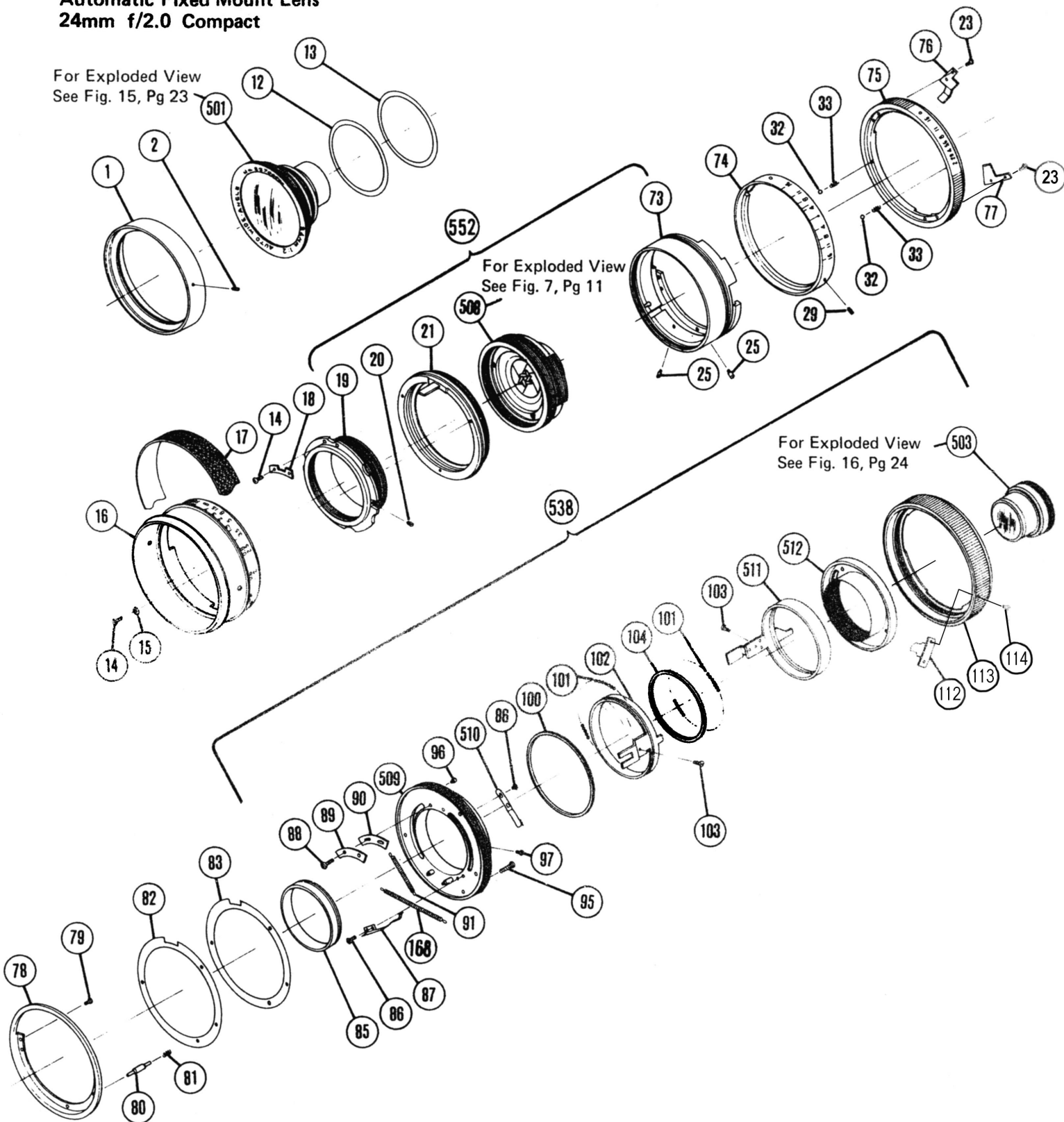


Figure 8. Canon FL/FD Mount Configuration

Parts List for Figure 8. Canon FL/FD Mount Configuration

Ref.	Vivitar Part No.	Description	Part Code		Quantity
1	3102835	RING, FILTER	V42001	770718	1
2	3513843	SETSCREW, 1.4x2.0	Z75918	B760520	2
12	3102846	SHIM, 0.2	V82901	770718	A/R
13	3102847	SHIM, 0.1	V82903	770718	A/R
14	3512980	SCREW, PANHD, 1.7x3.0x3.0	Z75913	B760520	5
15	3512870	WASHER, 1.7x3.5x0.4	Z75942	760520	3
16	3102848	RING, FOCUSING	V42007	770718	1
17	3102849	GRIP, FOCUSING	V82005	770718	1
18	3102850	PLATE, GUIDE	V82701	770718	1
19	*3102851	HELICOID, INNER	V82007	770718	1
20	3512886	SETSCREW, 1.7x2.5	Z75900	B760520	1
21	*3102852	HELICOID, OUTER	V82011	770718	1
23	3513725	SCREW, PANHD, 1.4x2.5x2.3, BLK	Z85910	B760615	4
24	3102855	SCREW, STOP	V82905	770718	2
25	3512988	SETSCREW, 1.4x2.5	W25903	B76017	3
32	3512898	BALL, STEEL, 1.6	Z75919	760520	2
33	3512857	SPRING, COIL, DETENT	Z75956	760520	2
73	*3102875	FRAME, HELICOID, C/FL	V82026	770718	1
74	3102876	RING, DEPTH OF FIELD, C/FL	V82024	770718	1
75	3102877	RING, APERTURE SETTING, C/FL	V82025	770718	1
76	3101527	ARM, APERTURE SETTING	K24725	770720	1
77	3102878	PLATE, STOP, APERTURE SETTING	V82716	770718	1
78	3102879	SPACER, MOUNT	V82027	770718	1
79	3103774	SCREW, FLTHD, 1.4x3.0x2.0	Z75968	B760520	3
80	3102880	PIN, EE SIGNAL	K24820	770720	1
81	3512850	SPRING, COIL, EE SIGNAL PIN	Z75940	760520	1
82	3101532	SHIM, FOCUS, 0.2	V82913	770718	A/R
83	3101534	SHIM, FOCUS, 0.1	V82915	770718	A/R
85	3102882	RING, SHIELD	V82030	770718	1
86	3101536	SCREW, PANHD, 1.4x2.5	Z15918	W770606	1
87	3101537	SPRING, MANUAL LATCH	K24726	770720	1
88	3101494	SCREW, PANHD, 1.7x3.0	K24925	770720	2
89	3101539	PLATE, STOP, APERTURE SETTING	K24727	770720	1
90	3101538	PLATE, STOP, DIAPHRAGM ACTUATOR	K24726	770720	1
91	3101540	SPRING, TENSION	K24952	770720	1
95	3101541	SCREW, PANHD, 1.7x2.5	K24957	770720	3
96	3512825	SCREW, SPECIAL HEAD	Z75934	B760520	1
97	3512974	SCREW, FLTHD, 1.4x2.5x2.0	Z75912	B760520	3
100	3101544	RING, BALL RETAINER, OUTER	K24041	770720	1
101	3512899	BALL, STEEL, 1.2	Z75941	76520	120
102	3102883	RING, APERTURE SETTING TRANSFER	V82029	770718	1
103	3101543	SCREW, SPRING POST	K24951	770718	2
104	3101545	RING, BALL RETAINER, INNER	K24042	770720	1
112	3101546	PLATE, STOP, BREECHLOCK	K24731	770720	1
113	3101547	RING, BREECHLOCK	K24043	770720	1
114	3514089	SCREW, FLTHD, 1.4x2.0, CHROME	Z75912	W760520	2
168	3102918	SPRING, COIL, TENSION, 1.4x38.0	V82947	770718	1
501	3103001	LENS GROUP ASSY, 1ST	V42U50	N770718	1
503	3103003	LENS GROUP ASSY, 2ND	V42F51	N770718	1
508	3103008	DIAPHRAGM HOUSING ASSY, CANON	V42C61	N770718	1
509	3103009	MOUNT, CANON	V42C88	N770718	1
510	3103010	SPRING, BREECHLOCK CATCH	K24C64	N770720	1
511	3103011	RING, DIAPHRAGM CONTROL TRANSFER	V42C83	N770718	1
512	3103012	TUBE, SHADE	V42C84	N770718	1
538	3103400	MOUNT ASSY, 24mm f/2.0 COMPACT, C/FD	V42C91	N770718	1
552	3103578	HELICOID ASSY, CANON	V82C62	N770718	1

*Not Available Separately.

**Automatic Fixed Mount Lens
24mm f/2.0 Compact**

For Exploded View
See Fig. 15, Pg 23

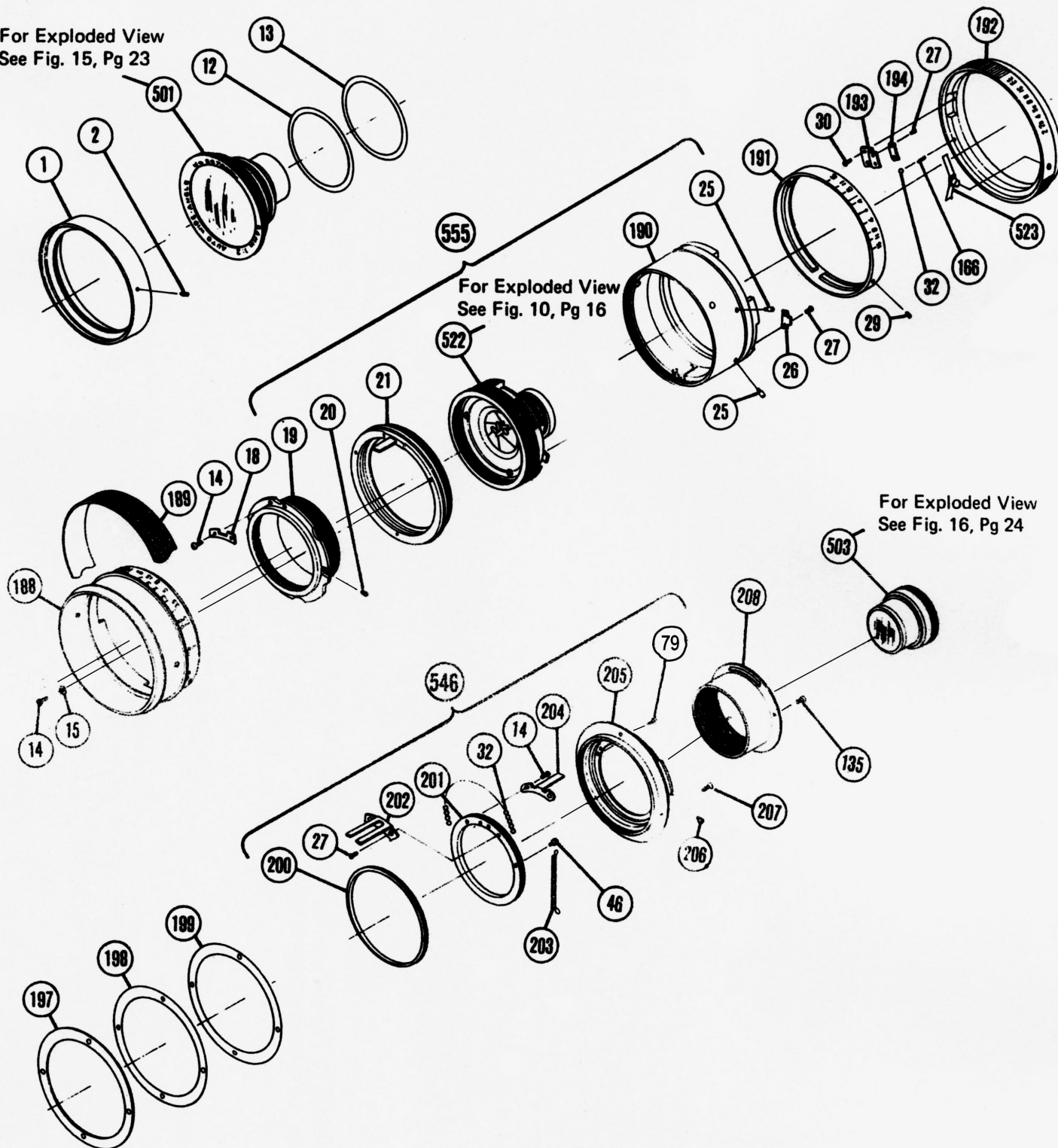


Figure 9. Konica Autoreflex Mount Configuration

Parts List for Figure 9. Konica Autoreflex Mount Configuration

Ref.	Vivitar Part No.	Description	Part Code		Quantity
1	3102835	RING, FILTER	V42001	770718	1
2	3513843	SETSCREW, 1.4x2.0	Z75918	B760520	2
12	3102846	SHIM, 0.2	V82901	770718	A/R
13	3102847	SHIM, 0.1	V82903	770718	A/R
14	3512980	SCREW, PANHD, 1.7x3.0x3.0	Z75913	B760520	5
15	3512870	WASHER, 1.7x3.5x0.4	Z75942	760520	3
18	3102850	PLATE, GUIDE	V82701	770718	1
19	*3102851	HELICOID, INNER	V82007	770718	1
20	3512886	SETSCREW, 1.7x2.5	Z75900	B760520	1
21	*3102852	HELICOID, OUTER	V82011	770718	1
23	3513725	SCREW, PANHD, 1.4x2.5x2.3, BLK	Z85910	B760615	2
25	3102855	SCREW, STOP	V82905	770718	2
26	3102856	PLATE, STOP	V82711	770718	2
27	3512984	SCREW, PANHD, 1.4x1.5x2.0	Z75922	B760520	2
29	3512988	SETSCREW, 1.4x2.5	W25903	B76017	3
30	3512990	SCREW, PANHD, 1.4x1.5x2.0	Z75952	B760520	2
32	3512898	BALL, STEEL, 1.6	Z75919	760520	2
46	3512835	SCREW, SPRING POST	Z75914	760520	1
79	3103774	SCREW, FLTHD, 1.4x3.0x2.0	Z75966	B760520	3
135	3513859	SCREW, FLTHD, 1.4x2.5x2.0	Z75963	B760520	5
166	3512857	SPRING, DETENT, 1.5x4.0	Z75920	760520	2
188	3102933	RING, FOCUS, KONICA	V42015	770718	1
189	3102934	GRIP, FOCUSING	V82056	770718	1
190	*3102935	FRAME, HELICOID	V82050	780801	1
191	3102936	RING, DEPTH OF FIELD, KONICA	V82049	770718	1
192	3102937	RING, APERTURE SETTING, KONICA	V82051	780801	1
193	3102938	ARM, APERTURE LIMIT STOP	V82734	770718	1
194	3102939	PLATE, APERTURE LIMIT STOP	V82735	770718	1
197	3102940	SHIM, FOCUS, 0.5	V82741	780801	A/R
198	3102941	SHIM, FOCUS, 0.2	V82931	780801	A/R
199	3102942	SHIM, FOCUS, 0.1	V82933	780801	A/R
200	3102943	RING, BALL	V82052	770718	1
201	3102944	RING, DIAPHRAGM CONTROL TRANSFER	V82053	770718	1
202	3102945	FORK, DIAPHRAGM CONTROL	V82736	770718	1
203	3512885	SPRING, COIL, TENSION, 2.5x27.0	Z75957	760520	1
204	3102947	ARM, DIAPHRAGM CONTROL COUPLING	V82737	770718	1
205	3102948	MOUNT, KONICA	V82054	780801	1
206	3512891	SCREW, STOP	Z75961	760520	1
207	3518091	SCREW, PANHD, 1.7x5.0x2.9	Z75985	W760520	4
208	3102951	PIPE, SHADE, K/AR	V42016	770718	1
501	3103001	LENS GROUP ASSY, 1ST	V42U50	N770718	1
503	3103003	LENS GROUP ASSY, 2ND	V42F51	N770718	1
522	3103022	DIAPHRAGM HOUSING ASSY, KONICA	V42K64	N770718	1
523	3103023	SPRING, EE LATCH	V42K85	N770718	1
546	3103408	MOUNT ASSY, 24mm f/2.0 COMPACT, K/AR	V42K91	N770718	1
555	3103581	HELICOID ASSY, K/AR	V82K62	N770718	1

*Not Available Separately.

**Automatic Fixed Mount Lens
24mm f/2.0 Compact**

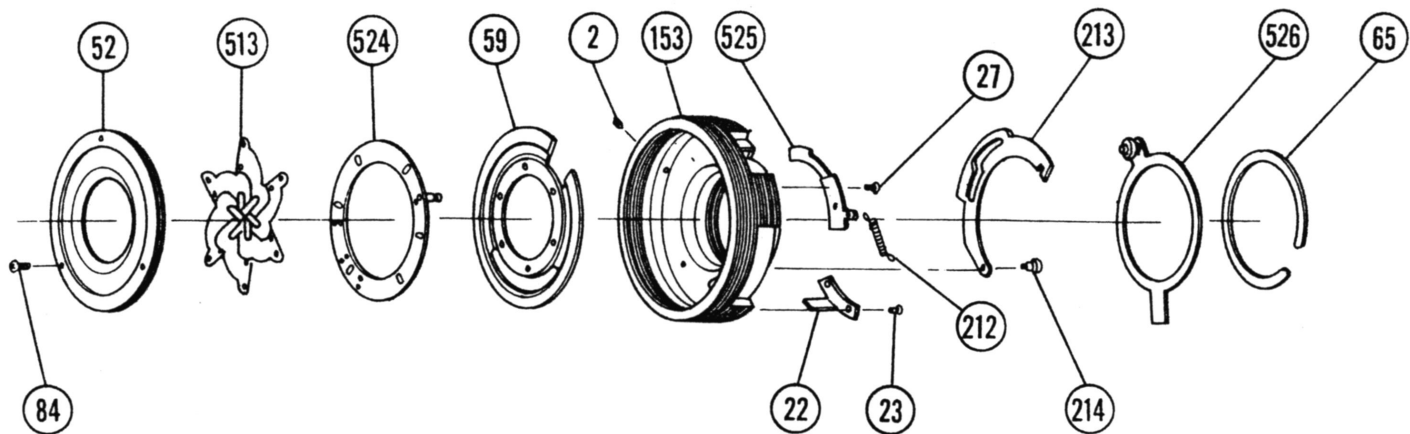


Figure 10. Diaphragm Housing Assembly, Konica Mount

NOTE

Illustrated for parts identification only. Not available as an assembly. Diaphragm housing (Ref. 153) is not available separately. Order Helicoid Assembly, Part No. 3103581.

Parts List for Figure 10

Ref.	Vivitar Part No.	Description	Part Code		Quantity
2	3513843	SETSCREW, 1.4x2.0	Z75918	B760520	2
22	3102853	GUIDE, HELICOID	V82702	770718	1
23	3513725	SCREW, PANHD, 1.4x2.5x2.3, BLK	Z85910	B760615	2
27	3512984	SCREW, PANHD, 1.4x1.5x2.0	Z75922	B760520	2
52	3102865	RING, BLADE RETAINER	V82008	770718	1
59	3102866	RING, DIAPHRAGM BLADE	V82009	770718	1
65	3102869	RING, RETAINING, EXT	V82709	770718	1
84	3102881	SCREW, PANHD, 1.4x3.6x2.0	V82911	B770718	3
153	*3102910	HOUSING, DIAPHRAGM	V82032	770718	1
212	3102952	SPRING, COIL, TENSION, 1.5x7.0	V82934	770718	1
213	3103411	CAM, APERTURE	V82733	770718	1
214	3102953	SCREW, SHOULDER	V82930	770718	1
513	3103013	BLADE, DIAPHRAGM	V42C76	N770718	6
524	3103024	RING, BLADE OPERATING	V42K80	N770718	1
525	3103025	PLATE, SPRING ANCHOR	V42K81	N770718	1
526	3103026	RING, APERTURE TRANSFER	V42K82	N770718	1

*Not Available Separately.

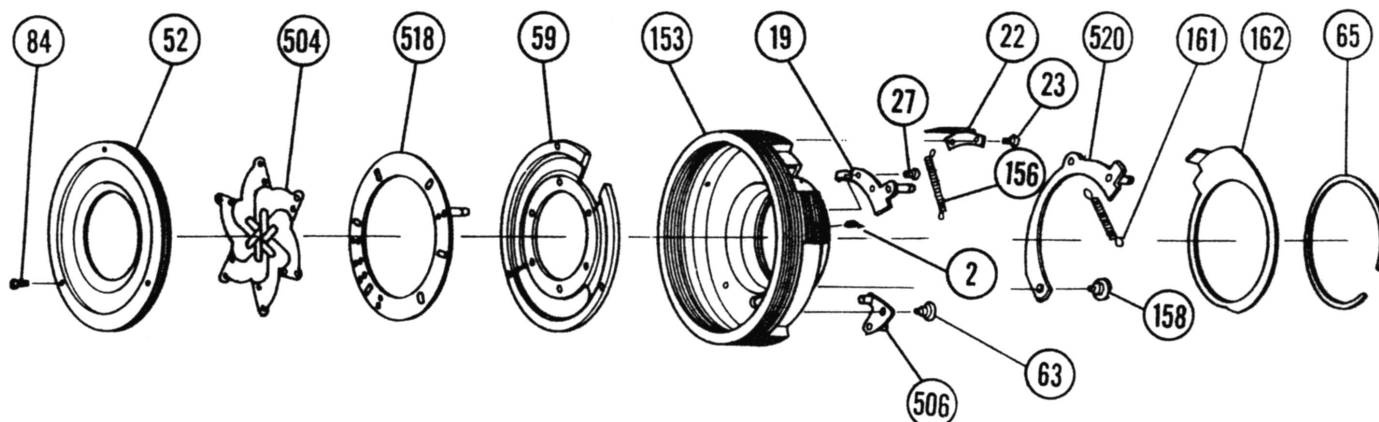


Figure 11. Diaphragm Housing Assembly, Olympus Mount

NOTE

Illustrated for parts identification only. Not available as an assembly. Diaphragm housing (Ref. 153) is not available separately. Order Helicoid Assembly, Part No. 3103579.

Parts List for Figure 11

Ref.	Vivitar Part No.	Description	Part Code		Quantity
2	3513843	SETSCREW, 1.4x2.0	Z75918	B760520	3
22	3102853	GUIDE, HELICOID	V82702	770718	1
23	3513725	SCREW, PANHD, 1.4x2.5x2.3, BLK	Z85910	B760615	2
27	3512984	SCREW, PANHD, 1.4x1.5x2.0	Z75922	B760520	2
52	3102865	RING, BLADE RETAINER	V82008	770718	1
59	3102866	RING, DIAPHRAGM BLADE	V82009	770718	1
63	3102867	SCREW, SHOULDER	V82904	770718	1
65	3102869	RING, RETAINING, EXT	V82709	770718	1
84	3102881	SCREW, PANHD, 1.4x3.6x2.0	V82911	B770718	3
153	*3102910	HOUSING, DIAPHRAGM	V82032	770718	1
156	3102911	SPRING, COIL, TENSION	V82926	770718	1
158	3102912	SCREW, SHOULDER	V82916	770718	1
161	3102913	SPRING, COIL, TENSION	V82927	770718	1
162	3102914	CAM, APERTURE	V82720	770718	1
504	3103004	BLADE, DIAPHRAGM	V42F71	N770718	6
506	3103006	CRANK, CAM FOLLOWER	V42F73	N770718	1
518	3102017	RING, BLADE OPERATING	V42077	N770718	1
519	3103018	PLATE, STOP	V42078	N770718	1
520	3103019	ARM, DIAPHRAGM CONTROL	V42079	N770718	1

*Not Available Separately.

Automatic Fixed Mount Lens
24mm f/2.0 Compact

For Exploded View
See Fig. 15, Pg 23

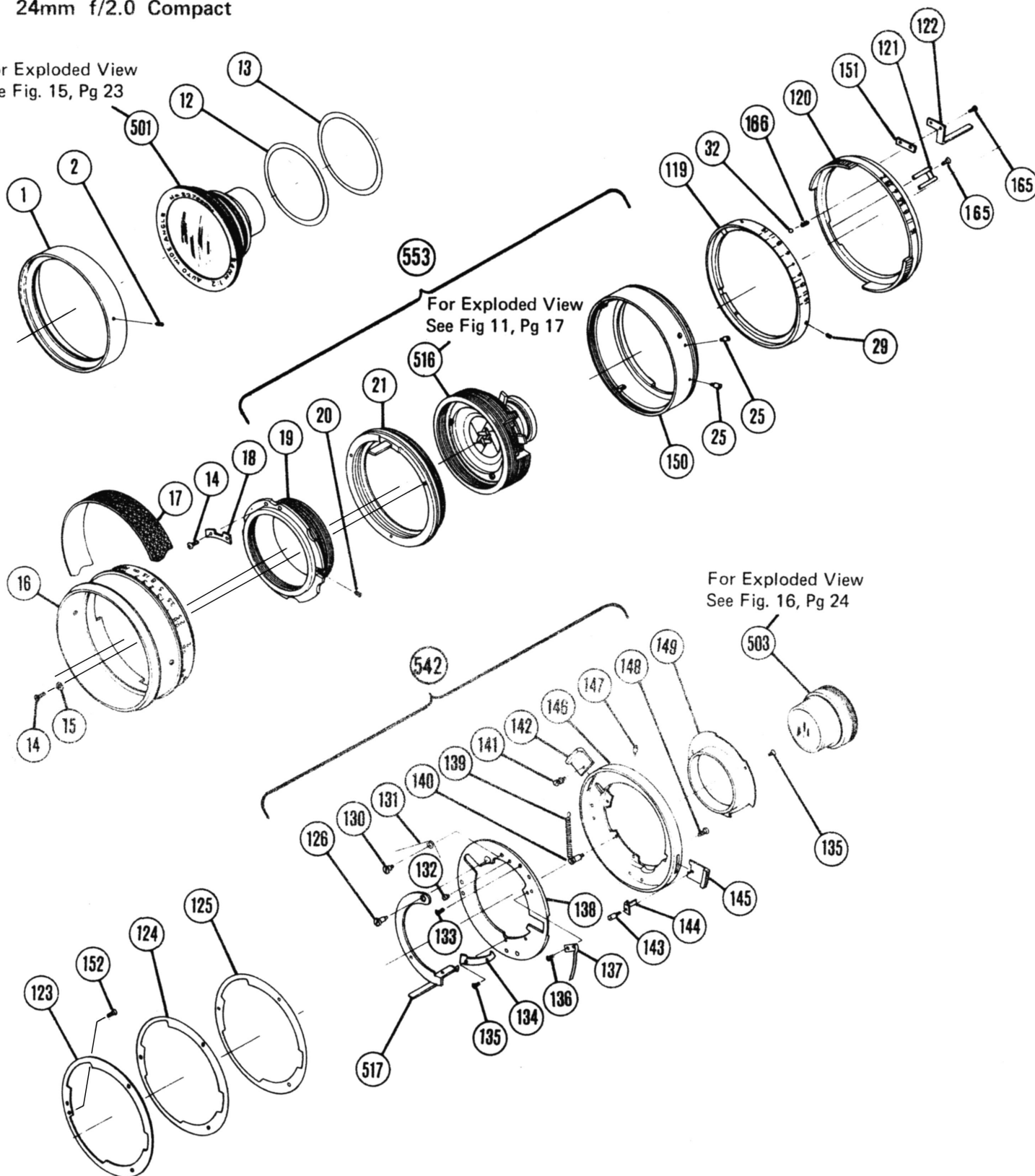


Figure 12. Olympus OM Mount Configuration

Parts List for Figure 12. Olympus OM Mount Configuration

Ref.	Vivitar Part No.	Description	Part Code		Quantity
1	3102835	RING, FILTER	V42001	770718	1
2	3513843	SETSCREW, 1.4x2.0	Z75918	B760520	2
12	3102846	SHIM, 0.2	V82901	770718	A/R
13	3102847	SHIM, 0.1	V82903	770718	A/R
14	3512980	SCREW, PANHD, 1.7x3.0x3.0	Z75913	B760520	5
15	3512870	WASHER, 1.7x3.5x0.4	Z75942	760520	3
16	3102848	RING, FOCUSING	V42007	770718	1
17	3102849	GRIP, FOCUSING	V82005	770718	1
18	3102850	PLATE, GUIDE	V82701	770718	1
19	*3102851	HELICOID, INNER	V82007	770718	1
20	3512886	SETSCREW, 1.7x2.5	Z75900	B760520	1
21	*3102852	HELICOID, OUTER	V82011	770718	1
25	3102855	SCREW, STOP	V82905	770718	2
29	3512988	SETSCREW, 1.4x2.5	W25903	B78017	3
32	3512898	BALL, STEEL, 1.6	Z75919	760520	60
119	3102885	RING, DEPTH OF FIELD, O/OM	V82033	770718	1
120	3102886	RING, APERTURE SETTING, OLYMPUS	V82035	770718	1
121	3102887	FORK, APERTURE SETTING	V82724	770718	1
122	3102888	ARM, APERTURE COUPLING	V82723	770718	1
123	3102889	RING, MOUNT SUPPORT	V82036	770718	1
124	3102890	SHIM, FOCUS, 0.2	V82923	770718	A/R
125	3102891	SHIM, FOCUS, 0.1	V82924	770718	A/R
126	3102892	SCREW, SHOULDER	V82919	770718	1
130	3102893	SCREW, SPRING RING	V82918	770718	1
131	3102894	SPRING, WIRE	V82928	770718	1
132	3102895	SCREW, SHOULDER	V82917	770718	1
133	3102896	SCREW, PANHD, 1.4x2.0	V82945	770718	3
134	3102897	PLATE, STOP	V82726	770718	1
135	3513859	SCREW, FLTHD, 1.4x2.5x2.0	Z75963	B760520	3
136	3512986	SCREW, PANHD, 1.4x2.0x1.8	Z75926	B760520	4
137	3102898	SPRING, LEAF, LENS LOCK	V82727	770718	1
138	3102899	PLATE, MOUNTING	V82039	770718	1
139	3102900	SPRING, COIL, TENSION, 2.0x15.0	V82925	770718	1
140	3512782	SCREW, SPRING POST	Z75946	760520	1
141	3102901	SCREW, SPRING POST	V82920	770718	1
142	3102902	BUTTON, MANUAL	V82038	770718	1
143	3102903	SCREW, SHOULDER	V82921	770718	1
144	3512931	PLATE, MOUNT LOCKING	Z75741	760520	1
145	3102904	BUTTON, LENS RELEASE	V82037	770718	1
146	3102905	MOUNT, O/OM	V82040	770718	1
147	3512934	SCREW, STOP	Z75975	760520	1
148	3518091	SCREW, PANHD, 1.7x2.9	Z75985	W760520	3
149	3102907	PIPE, SHADE	V42013	770718	1
150	*3102908	FRAME, HELICOID	V82034	770718	1
151	3102909	SHIM, APERTURE ARM	V82722	770718	1
152	3512985	SCREW, FLTHD, 1.7x2.5	Z75927	B760520	3
165	3102916	SCREW, PANHD, 1.4x2.0	V82944	B770718	1
166	3512857	SPRING, DETENT, 1.5x4.0	Z75920	760520	2
501	3103001	LENS GROUP ASSY, 1ST	V42U50	N770718	1
503	3103003	LENS GROUP ASSY, 2ND	V42F51	N770718	1
516	3103015	DIAPHRAGM HOUSING ASSY, O/OM	V42062	N770718	1
517	3103016	ARM, DIAPHRAGM CONTROL	V42086	N770718	1
542	3103404	MOUNT ASSY, 24mm f/2.0 COMPACT, O/OM	V42091	N770718	1
553	3103579	HELICOID ASSY, O/OM	V82062	N770718	1

*Not Available Separately.

Automatic Fixed Mount Lens
24mm f/2.0 Compact

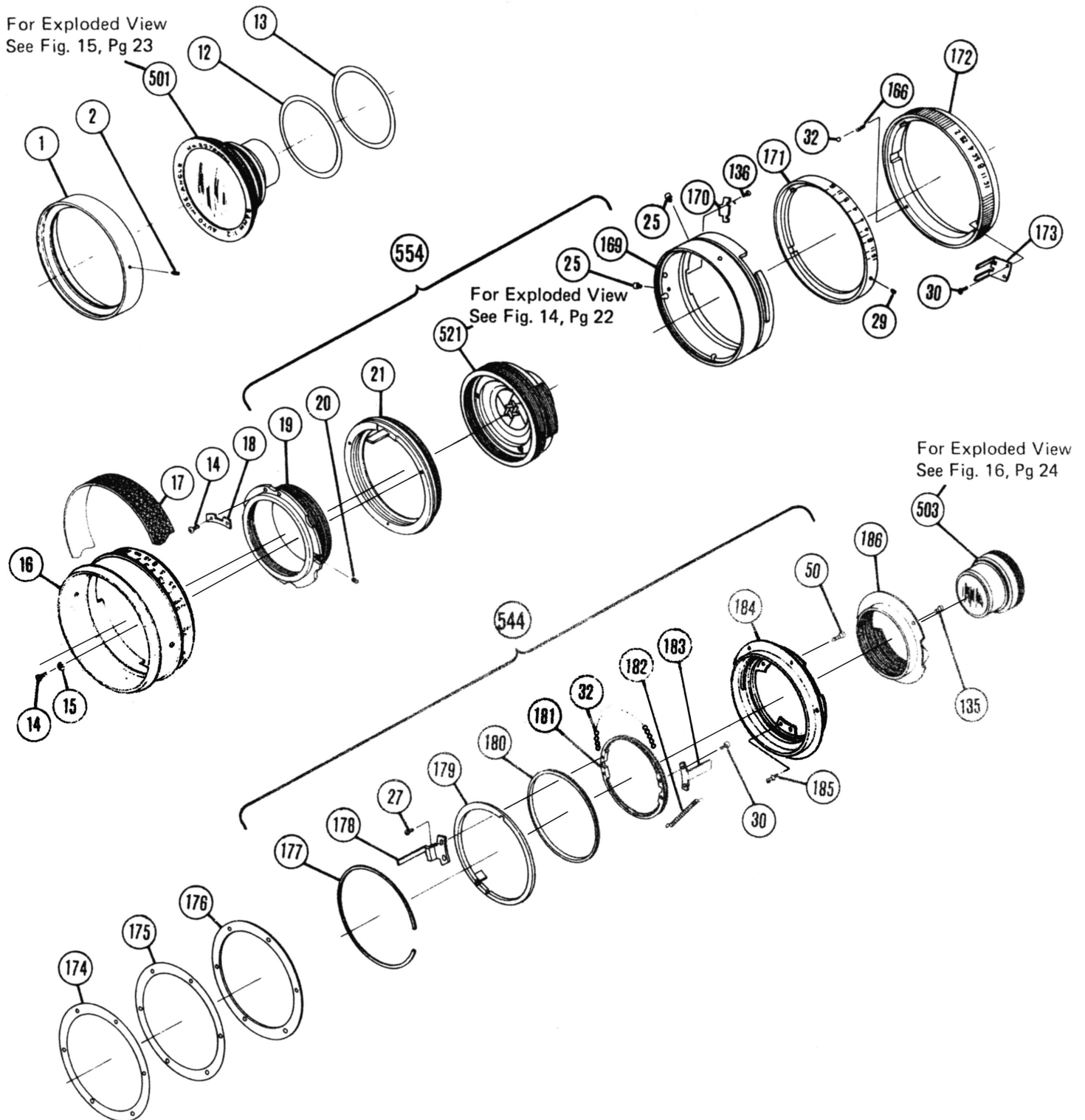


Figure 13. Pentax K/M Mount Configuration

Parts List for Figure 13. Pentax K/M Mount Configuration

Ref.	Vivitar Part No.	Description	Part Code		Quantity
1	3102835	RING, FILTER	V42001	770718	1
2	3513843	SETSCREW, 1.4x2.0	Z75918	B760520	2
12	3102846	SHIM, 0.2	V82901	770718	A/R
13	3102847	SHIM, 0.1	V82903	770718	A/R
14	3512980	SCREW, PANHD, 1.7x3.0x3.0	Z75913	B760520	5
15	3512870	WASHER, 1.7x3.5x0.4	Z75942	760520	3
16	3102848	RING, FOCUSING	V42007	770718	1
17	3102849	GRIP, FOCUSING	V82005	770718	1
18	3102850	PLATE, GUIDE	V82701	770718	1
19	*3102851	HELICOID, INNER	V82007	770718	1
20	3512886	SETSCREW, 1.7x2.5	Z75900	B760520	1
21	*3102852	HELICOID, OUTER	V82011	770718	1
25	3102855	SCREW, STOP	V82905	770718	2
27	3512984	SCREW, PANHD, 1.4x1.5x2.0	Z75922	B760520	2
29	3512988	SETSCREW, 1.4x2.5	W25903	B76017	3
30	3512990	SCREW, PANHD, 1.4x1.5x2.0	Z75952	B760520	2
32	3512898	BALL, STEEL, 1.6	Z75919	760520	75
50	3101608	SCREW, PANHD, 1.7x2.5	X82909	W770718	5
136	3512986	SCREW, PANHD, 1.4x2.0x1.8	Z75926	B760520	4
166	3512857	SPRING, DETENT, 1.5x4.0	Z75920	760520	2
169	*3102919	FRAME, HELICOID	V82043	770718	1
170	3102920	PLATE, STOP	V82732	770718	1
171	3102921	RING, DEPTH OF FIELD, P/K	V82042	770718	1
172	3102922	RING, APERTURE SETTING, P/K	V82044	770718	1
173	3102923	FORK, APERTURE SETTING	V82731	770718	1
174	3101582	SHIM, FOCUS, 0.5	K24973	770720	A/R
175	3101583	SHIM, FOCUS, 0.2	K24974	770720	A/R
176	3101585	SHIM, FOCUS, 0.1	K24976	770720	A/R
177	3101586	RING, RTNG, INT	K24753	770720	1
178	3102924	ARM, DIAPHRAGM CONTROL	V82728	780412	1
179	3102925	RING, APERTURE SETTING TRANSFER	V82046	770718	1
180	3102926	RING, BALL RETAINING	K24062	770720	1
181	3102927	RING, DIAPHRAGM CONTROL TRANSFER	V82045	780412	1
182	3102928	SPRING, COIL, TENSION, 2.0x8.0	V82929	770718	1
183	3102929	ARM, DIAPHRAGM CONTROL COUPLING	V82729	770718	1
184	3102930	MOUNT, PENTAX K	K24061	770720	1
185	3101633	SCREW, SPRING POST	W25932	760817	1
186	3102931	PIPE, SHADE	V42014	780912	1
501	3103001	LENS GROUP ASSY, 1ST	V42U50	N770718	1
503	3103003	LENS GROUP ASSY, 2ND	V42F51	N770718	1
521	3103021	DIAPHRAGM HOUSING ASSY, P/K	V42P63	N770718	1
544	3103406	MOUNT ASSY, 24mm f/2.0 COMPACT, P/K	V42P91	N770718	1
554	3103580	HELICOID ASSY, P/K	V82P62	N770718	1

*Not Available Separately.

Automatic Fixed Mount Lens
24mm f/2.0 Compact

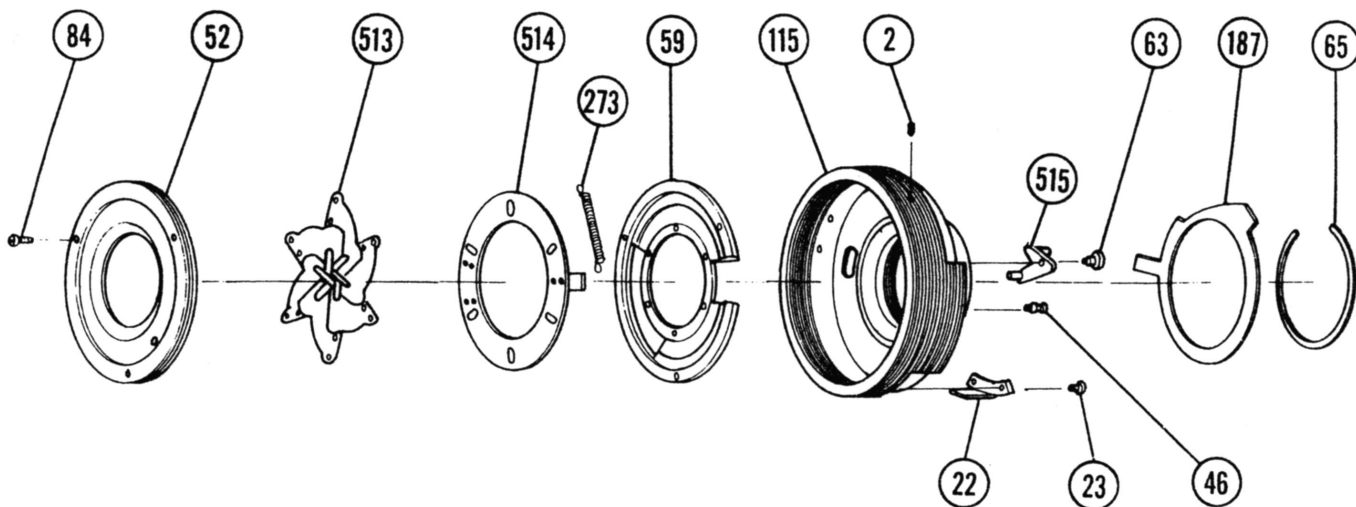


Figure 14. Diaphragm Housing Assembly, Pentax K Mount

NOTE

Illustrated for parts identification only. Not available as an assembly. Diaphragm housing (Ref. 115) is not available separately. Order Helicoid Assembly, Part No. 3103580.

Parts List for Figure 14

Ref.	Vivitar Part No.	Description	Part Code	Quantity
2	3513843	SETSCREW, 1.4x2.0	Z75918 B760520	2
22	3102853	GUIDE, HELICOID	V82702 770718	1
23	3513725	SCREW, PANHD, 1.4x2.5x2.3, BLK	Z85910 B760615	2
41	3512835	SCREW, SPRING POST	Z75914 760520	1
52	3102865	RING, BLADE RETAINER	V82008 770718	1
59	3102866	RING, DIAPHRAGM BLADE	V82009 770718	1
63	3102867	SCREW, SHOULDER	V82904 770718	1
65	3102869	RING, RETAINING, EXT	V82709 770718	1
84	3102881	SCREW, PANHD, 1.4x3.6x2.0	V82911 B770718	3
115	*3102884	HOUSING, DIAPHRAGM, M, C, P	V82023 770718	1
187	3102932	CAM, APERTURE	V82730 770718	1
273	3103000	SPRING, COIL, TENSION	V82948 770718	1
513	3103013	BLADE, DIAPHRAGM	V42C76 N770718	6
514	3103067	RING, BLADE OPERATING	V42C75 N770718	1
515	3103014	CRANK, CAM FOLLOWER	V42C74 N770718	1

*Not Available Separately.

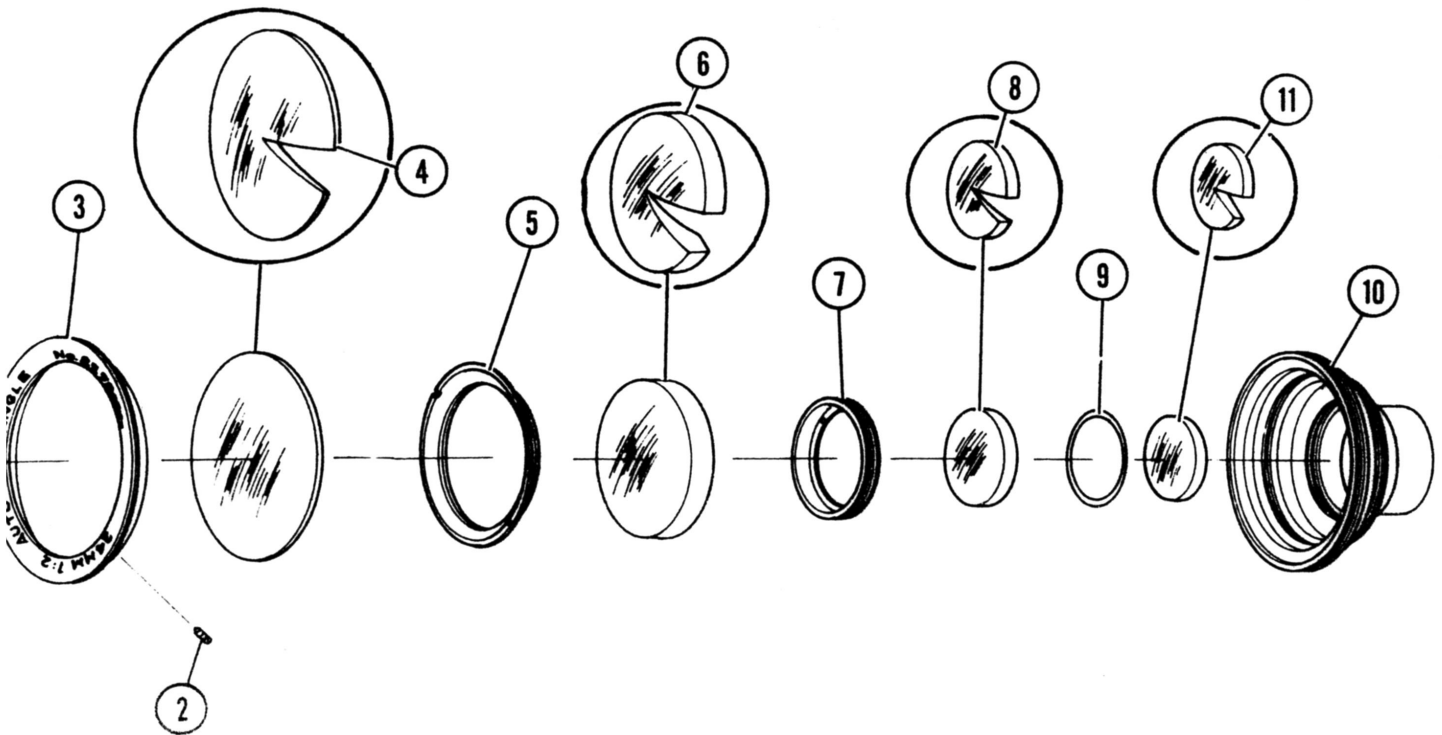


Figure 15. First Lens Group Assembly

Parts List for Figure 15

Ref.	Vivitar Part No.	Description	Part Code		Quantity
2	3513843	SETSCREW, 1.4x2.0	Z75918	B760520	1
3	3102837	RING, NAME	V42002	770718	1
4	3102838	LENS ELEMENT, 1ST	G00171	707020	1
5	3102839	RING, RETAINING, 2ND ELEMENT	V42003	770718	1
6	3102840	LENS ELEMENT, 2ND	G00172	770720	1
7	3102841	RING, RETAINING, 3RD ELEMENT	V42004	770718	1
8	3102842	LENS ELEMENT, 3RD	G00173	770720	1
9	3102843	RING, LENS SPACING	V42005	770718	1
10	3102844	HOUSING, FRONT LENS GROUP	V42006	770718	1
11	3102845	LENS ELEMENT, 4TH	G00174	770720	1

Automatic Fixed Mount Lens
24mm f/2.0 Compact

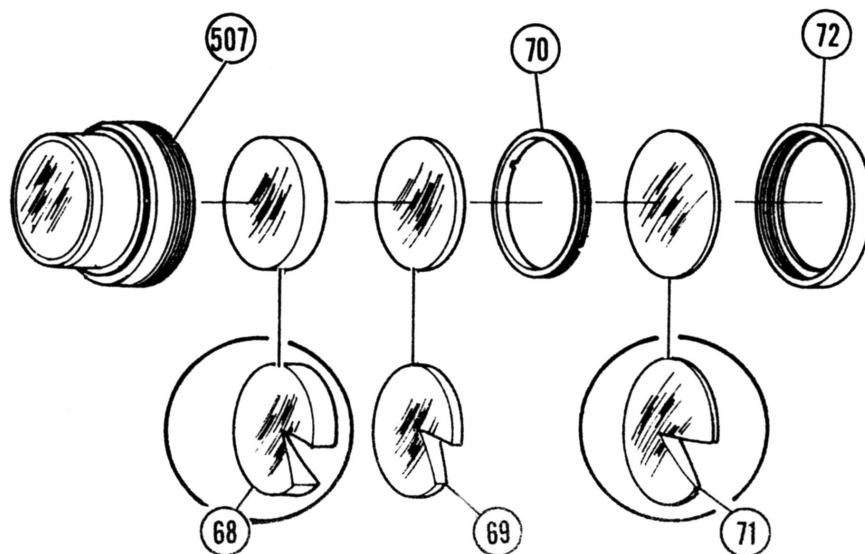


Figure 16. Second Lens Group Assembly

Parts List for Figure 16

Ref.	Vivitar Part No.	Description	Part Code	Quantity
68	3102870	LENS ELEMENT, 6TH	G00176 770720	1
69	3102871	LENS ELEMENT, 7TH	G00177 770720	1
70	3102872	RING, RETAINING, 7TH LENS ELEMENT	V42010 770718	1
71	3102873	LENS ELEMENT, 8TH	G00178 770720	1
72	3102874	RING, RETAINING, 8TH LENS ELEMENT	V42011 770718	1
507	3102007	LENS ELEMENT, 9TH, AND HOUSING	V42F52 N770718	1

SERVICE NOTES

1. Nominal spacings for helicoid components are shown in Figures 17 through 23.

NOTE

Dimension "A" in Figures 17 through 23 means that the back edge of the diaphragm housing is inside the back edge of the helicoid frame by the amount shown. Dimension "B" means that the diaphragm housing projects beyond the helicoid frame by the amount shown. All dimensions are in millimeters.

2. This is a variable air space lens. There is differential movement between the front and rear lens groups as the lens is focused. Spacings are highly critical, and the use of resolution testing equipment is recommended for final adjustment.
3. When disassembling, note thickness of shims under front lens group and mark start points of helicoid threads to facilitate correct reassembly.
4. When reassembling (particularly with new parts) adjust shim thickness under front lens group for best overall resolution. This is a critical adjustment.
5. Helicoid assemblies for the 24mm f/2.0 and the 28mm f/2.0 compact lenses for corresponding mounts have identical component parts. They are interchangeable when spacings are adjusted as specified in Figures 17 through 23

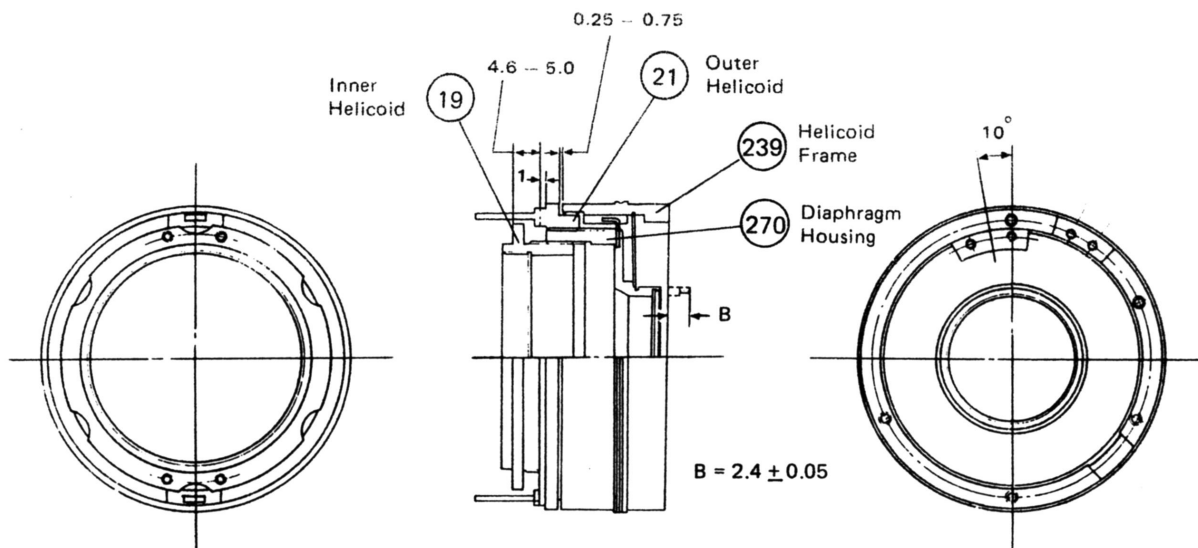


Figure 17. Helicoid Assembly Critical Dimensions, Universal Mount

Automatic Fixed Mount Lens
24mm f/2.0 Compact

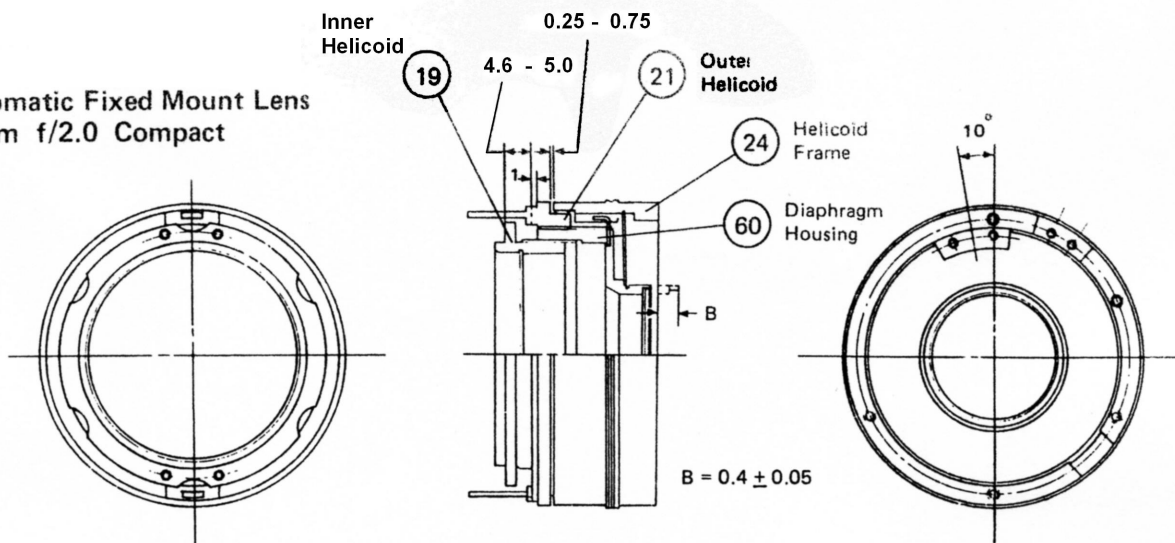


Figure 18. Helicoid Assembly Critical Dimensions, Nikon AI Mount

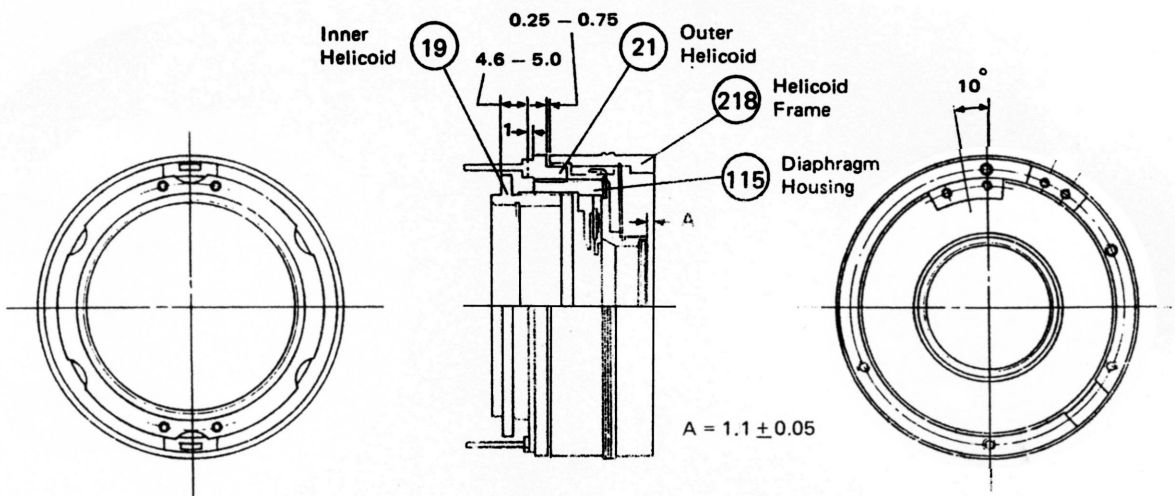


Figure 19. Helicoid Assembly Critical Dimensions, Minolta Mount

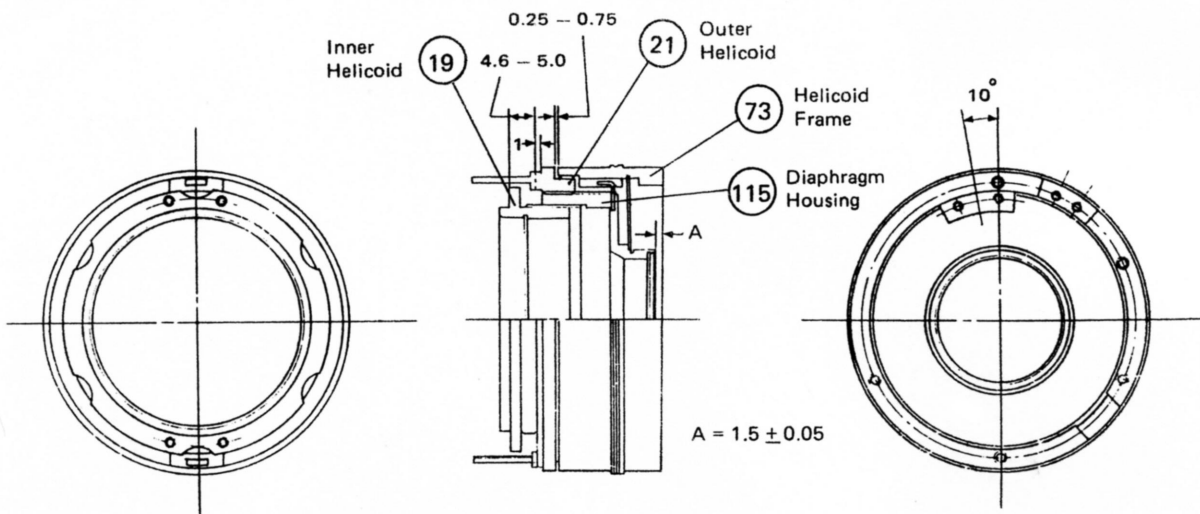


Figure 20. Helicoid Assembly Critical Dimensions, Canon Mount

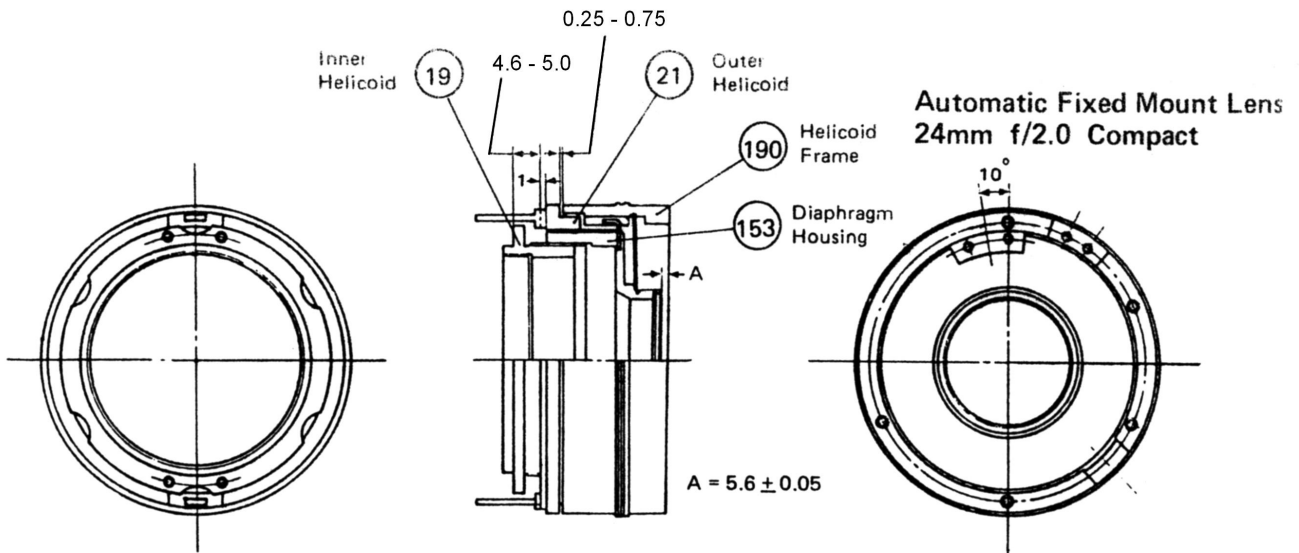


Figure 21. Helicoid Assembly Critical Dimensions, Konica Mount

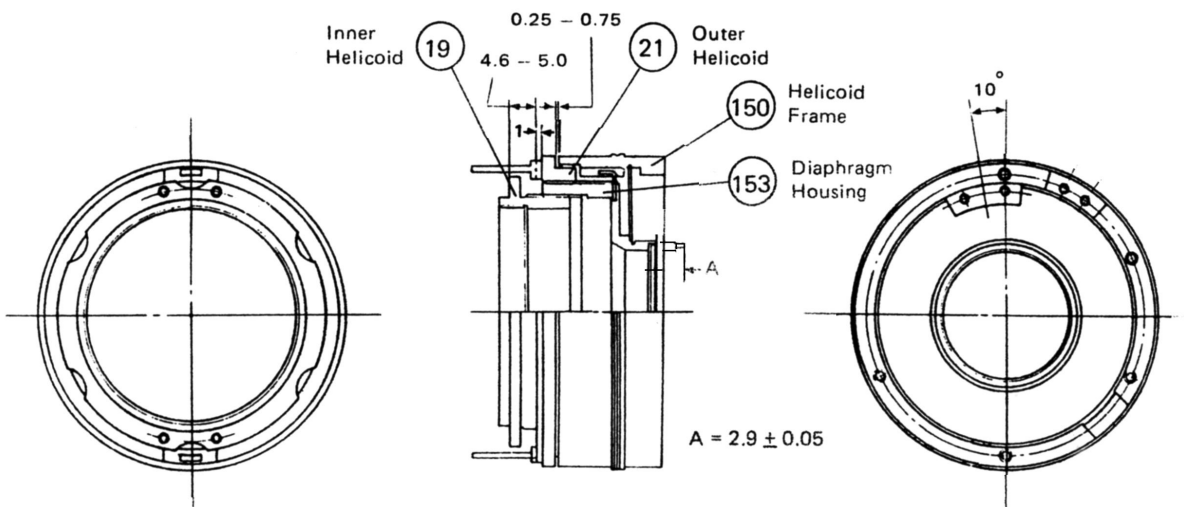


Figure 22. Helicoid Assembly Critical Dimensions, Olympus Mount

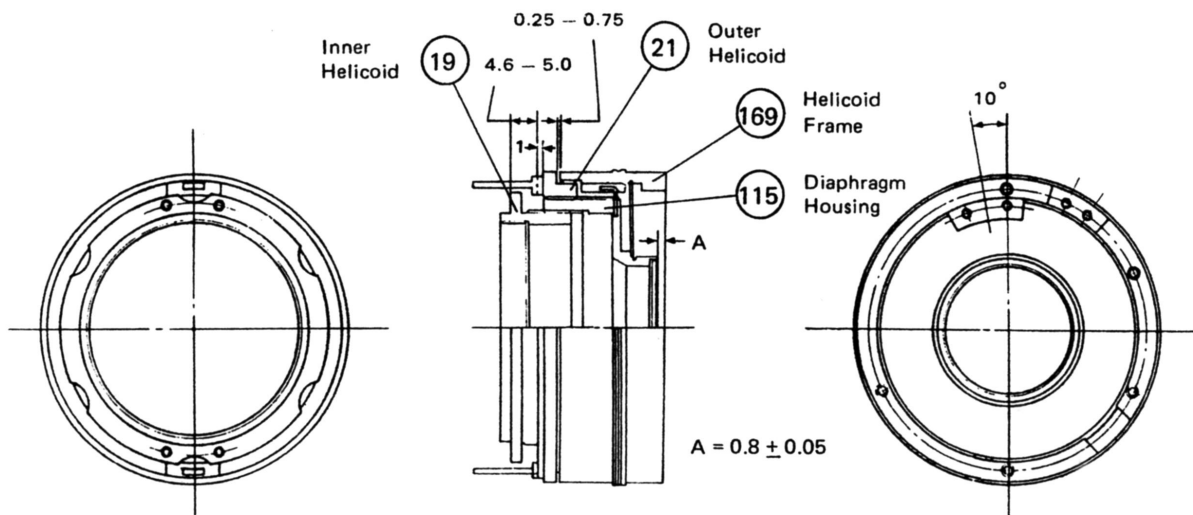


Figure 23. Helicoid Assembly Critical Dimensions, Pentax K Mount

Automatic Fixed Mount Lens
24mm f/2.0 Compact

COMPLETE PARTS LIST

Vivitar Part No.	Description	Part Code	Quantity						
			U	N	M	C	K	O	P
3101494	SCREW, PNHD, 1.7x3.0	K24925 770720					2		
3101527	ARM, APERTURE SETTING	K24725 770720					1		
3103774	SCREW, FLTHD, 1.4x3.0x2.0	Z75968 B760520	3				3	1	
3101532	SHIM, FOCUS, 0.2	V82913 770718					A/R		
3101534	SHIM, FOCUS, 0.1	V82915 770718					A/R		
3101536	SCREW, PNHD, 1.7x2.5	Z15918 W770606					1		
3101537	SPRING, MANUAL LATCH	K24728 770720					1		
3101538	PLATE, STOP, DIAPHRAGM ACTUATOR	K24726 770720					1		
3101539	PLATE, STOP, APERTURE SETTING	K24727 770720					1		
3101540	SPRING, COIL, TENSION, 1.5x38.0	K24952 770720					1		
3101541	SCREW, PNHD, 1.7x2.5	K24957 770720					3		
3101543	SCREW, SPRING POST	K24951 770720					2		
3101544	RING, BALL RTNR, OUTER	K24041 770720					1		
3101545	RING, BALL RTNR, INNER	K24042 770720					1		
3101546	PLATE, STOP, BREECHLOCK	K24731 770720					1		
3101547	RING, BREECHLOCK	K24043 770720					1		
3101573	SCREW, PNHD, 1.7x7.5x0.5	K24968 B770720	4						
3101582	SHIM, FOCUS, 0.5	K24973 770720							A/R
3101583	SHIM, FOCUS, 0.2	K24974 770720							A/R
3101585	SHIM, FOCUS, 0.1	K24976 770720							A/R
3101586	RING, RTNG, INT	K24753 770720							1
3101601	SHIM, FOCUS, 0.2	V82907 770718				A/R			
3101602	SHIM, FOCUS, 0.1	V82908 770718				A/R			
3101603	RING, BALL RTNG	V82015 770718				1			
3101606	SPRING, COIL, TENSION	V82910 780110				1			
3101607	MOUNT, NIKON AI	V82017 770718				1			
3101608	SCREW, PNHD, 1.7x2.5	V82909 W770718			5				5
3101632	SCREW, PNHD, 1.4x2.2x3.0	Z15921 771215				2			
3101633	SCREW, SPRING POST	W25932 760817				1			1
3102835	RING, FILTER	V42001 770718	1	1	1	1	1	1	1
3102837	RING, NAME	V42002 770718	1	1	1	1	1	1	1
3102838	LENS ELEMENT, 1ST	G00171 707020	1	1	1	1	1	1	1
3102839	RING, RTNG, 2ND ELEMENT	V42003 770718	1	1	1	1	1	1	1
3102840	LENS ELEMENT, 2ND	G00172 770720	1	1	1	1	1	1	1
3102841	RING, RTNG, 3RD ELEMENT	V42004 770718	1	1	1	1	1	1	1
3102842	LENS ELEMENT, 3RD	G00173 770720	1	1	1	1	1	1	1
3102843	RING, LENS SPACING	V42005 770718	1	1	1	1	1	1	1
3102844	HOUSING, FRONT LENS GROUP	V42006 770718	1	1	1	1	1	1	1
3102845	LENS ELEMENT, 4TH	G00174 770720	1	1	1	1	1	1	1
3102846	SHIM, 0.2	V82901 770718					--- As Required ---		
3102847	SHIM, 0.1	V82903 770718					--- As Required ---		
3102848	RING, FOCUSING	V42007 770718	1	1	1	1	1	1	1
3102849	GRIP, FOCUSING	V82005 770718	1	1	1	1	1	1	1
3102850	PLATE, GUIDE	V82701 770718	1	1	1	1	1	1	1
*3102851	HELICOID, INNER	V82007 770718	1	1	1	1	1	1	1
*3102852	HELICOID, OUTER	V82011 770718	1	1	1	1	1	1	1
3102853	GUIDE, HELICOID	V82702 770718	1	1	1	1	1	1	1
*3102854	FRAME, HELICOID, N/AI	V82012 770718				1			
3102855	SCREW, STOP	V82905 770718	1	1	1	1	1	1	1
3102856	PLATE, STOP	V82711 770718			2	2		2	
3102857	RING, DEPTH OF FIELD, NIKON	V82013 770718			1				
3102858	FORK, APERTURE SETTING	V82710 770718			1				
3102859	RING, APERTURE SETTING, NIKON	V82014 770718			1				
3518107	FORK, METER COUPLING	Z75747 770520			1				
3102861	RING, MOUNT SUPPORT	V82712 770718			1				
3102862	ARM, DIAPHRAGM CONTROL	V82713 771224			1				
3102863	RING, DIAPHRAGM CONTROL TRANSFER	V82016 770718			1				
3102864	PIPE, SHADE	V42008 770718			1				

*Not Available Separately

COMPLETE PARTS LIST, Continued

Vivitar Part No.	Description	Part Code	Quantity							
			U	N	M	C	K	O	P	
3102865	RING, BLADE RTNR	V82008 770718	1	1	1	1	1	1	1	
3102866	RING, DIAPHRAGM BLADE	V82009 770718	1	1	1	1	1	1	1	
3102867	SCREW, SHOULDER	V82904 770718	1	1	1	1	1	1	1	
3102868	CAM, APERTURE, C/FL	V82708 770718		1		1				
3102869	RING, RTNG, EXT	V82709 770718	1	1	1	1	1	1	1	
3102870	LENS ELEMENT, 6TH	G00176 770720	1	1	1	1	1	1	1	
3102871	LENS ELEMENT, 7TH	G00177 770720	1	1	1	1	1	1	1	
3102872	RING, RTNG, 7TH LENS ELEMENT	V42010 770718	1	1	1	1	1	1	1	
3102873	LENS ELEMENT, 8TH	G00178 770720	1	1	1	1	1	1	1	
3102874	RING, RTNG, 8TH LENS ELEMENT	V42011 770718	1	1	1	1	1	1	1	
*3102875	FRAME, HELICOID, C/FL	V82026 770718					1			
3102876	RING, DEPTH OF FIELD, C/FL	V82024 770718					1			
3102877	RING, APERTURE SETTING, C/FL	V82025 770718					1			
3102878	PLATE, STOP, APERTURE SETTING	V82716 770718					1			
3102879	SPACER, MOUNT	V82027 770718					1			
3102880	PIN, EE SIGNAL	K24820 770720					1			
3102881	SCREW, PNHD, 1.4x3.6x2.0	V82911 B770718	3	3	3	3	3	3	3	
3102882	RING, SHIELD	V82030 770718					1			
3102883	RING, APERTURE SETTING TRANSFER	V82029 770718					1			
*3102884	HOUSING, DIAPHRAGM, M, C, P	V82023 770718				1	1		1	
3102885	RING, DEPTH OF FIELD, O/OM	V82033 770718							1	
3102886	RING, APERTURE SETTING, O	V82035 770718							1	
3102887	FORK, APERTURE SETTING	V82724 770718							1	
3102888	ARM, APERTURE COUPLING	V82723 770718							1	
3102889	RING, MOUNT SUPPORT	V82036 770718							1	
3102890	SHIM, FOCUS, 0.2	V82923 770718							1	
3102891	SHIM, FOCUS, 0.1	V82924 770718							1	
3102892	SCREW, SHOULDER	V82919 770718							1	
3102893	SCREW, SPRING RTNG	V82918 770718							1	
3102894	SPRING, WIRE	V82928 770718							1	
3102895	SCREW, SHOULDER	V82917 770718							1	
3102896	SCREW, PNHD, 1.4x2.0	V82945 770718							1	
3102897	PLATE, STOP	V82726 770718							3	
3102898	SPRING, LEAF, LENS LOCK	V82727 770718							1	
3102899	PLATE, MOUNTING	V82039 770718							1	
3102900	SPRING, COIL, TENSION, 2.0x15.0	V82925 770718							1	
3102901	SCREW, SPRING POST	V82920 770718							1	
3102902	BUTTON, MANUAL	V82038 770718							1	
3102903	SCREW, SHOULDER	V82921 770718							1	
3102904	BUTTON, LENS RELEASE	V82037 770718							1	
3102905	MOUNT, O/OM	V82040 770718							1	
3518091	SCREW, PNHD, 1.7x2.9	Z75985 W760520							4	
3102907	PIPE, SHADE	V42013 770718							1	
*3102908	FRAME, HELICOID	V82034 770718							1	
3102909	SHIM, APERTURE ARM	V82722 770718							1	
*3102910	HOUSING, DIAPHRAGM	V82032 770718						1	1	
3102911	SPRING, COIL, TENSION	V82926 770718							1	
3102912	SCREW, SHOULDER	V82916 770718							1	
3102913	SPRING, COIL, TENSION	V82927 770718							1	
3102914	CAM, APERTURE	V82720 770718							1	
3102915	SPRING, COIL, TENSION	V82912 770718		1		1				
3102916	SCREW, PNHD, 1.4x2.0	V82944 B770718							1	
3512857	SPRING, DETENT, 1.5x4.0	Z75920 760520	2	2	2		2	2	2	
3102918	SPRING, COIL, TENSION, 1.5x38.0	V82947 770718				1				
*3102919	FRAME, HELICOID	V82043 770718							1	
3102920	PLATE, STOP	V82732 770718							1	

*Not Available Separately

Automatic Fixed Mount Lens
24mm f/2.0 Compact

COMPLETE PARTS LIST, Continued

Vivitar Part No.	Description	Part Code	Quantity						
			U	N	M	C	K	O	P
3102921	RING, DEPTH OF FIELD, P/KM	V82042 770718							1
3102922	RING, APERTURE SETTING, P/KM	V82044 770718							1
3102923	FORK, APERTURE SETTING	V82731 770718							1
3102924	ARM, DIAPHRAGM CONTROL	V82728 770718							1
3102925	RING, APERTURE SETTING TRANSFER	V82046 770718							1
3102926	RING, BALL RTNG	K24062 770720							1
3102927	RING, DIAPHRAGM CONTROL TRANSFER	V82045 770718							1
3102928	SPRING, COIL, TENSION, 2.0x8.0	V82929 770718							1
3102929	ARM, DIAPHRAGM CONTROL COUPLING	V82729 770718							1
3102930	MOUNT, PENTAX KM	K24061 770720							1
3102931	PIPE, SHADE	V42014 770718							1
3102932	CAM, APERTURE	V82730 770718							1
3102933	RING, FOCUSING, K/AUTO REFL.	V42015 770718							1
3102934	GRIP, FOCUSING	V82056 770718							1
*3102935	FRAME, HELICOID	F82050 770718							1
3102936	RING, DEPTH OF FIELD, K/AUTO REFL.	V82049 770718							1
3102937	RING, APERTURE SETTING, K/AUTO REFL.	V82051 770718							1
3102938	ARM, APERTURE LIMIT STOP	V82734 770718							1
3102939	PLATE, APERTURE LIMIT STOP	V82735 770718							1
3102940	SHIM, FOCUS, 0.5	V82741 780801							A/R
3102941	SHIM, FOCUS, 0.2	V82931 770718							A/R
3102942	SHIM, FOCUS, 0.1	V82933 770718							A/R
3102943	RING, BALL RTNG	V82052 770718							1
3102944	RING, DIAPHRAGM CONTROL TRANSFER	V82053 770718							1
3102945	FORK, DIAPHRAGM CONTROL	V82736 770718							1
3512885	SPRING, COIL, TENSION, 2.5x27.0	Z75957 760520							1
3102947	ARM, DIAPHRAGM CONTROL COUPLING	V82737 770718							1
3102948	MOUNT, KONICA	V82054 770718							1
3512891	SCREW, STOP	Z75961 760520							1
3102951	PIPE, SHADE, K/AUTO REFL.	V42016 770718							1
3102952	SPRING, COIL, TENSION, 1.5x7.0	V82934 770718							1
3102953	SCREW, SHOULDER	V82930 770718							1
3102954	RING, FOCUSING, MINOLTA	V42017 770718							1
*3102955	FRAME, HELICOID, MINOLTA	V82059 770718							1
3102956	RING, DEPTH OF FIELD, MINOLTA	V82058 770718							1
3102957	RING, APERTURE SETTING, M	V82060 770718							1
3102958	FORK, APERTURE SETTING, M	V82744 770718							1
3102959	LUG, APERTURE COUPLING, M	V82746 770718							1
3102960	RING, APERTURE RING RTNG	V82061 770718							1
3102961	SCREW, FLTHD, 1.4x2.2x3.0	K90910 8761210							3
3102962	SHIM, FOCUS, 0.2, MINOLTA	V82938 770718							A/R
3102963	SHIM, FOCUS, 0.1, MINOLTA	V82940 770718							A/R
3102964	RING, BALL RTNG	K24021 770720							1
3102965	RING, DIAPHRAGM CONTROL TRANSFER	V82062 770718							1
3102966	ARM, DIAPHRAGM CONTROL	V82742 770718							1
3102967	SPRING, COIL, TENSION, 2.0x5.0	V82937 770718							1
3102968	ARM, DIAPHRAGM CONTROL COUPLING	V82745 770718							1
3102969	SPRING, DIAPHRAGM ARM	V82936 770718							1
3102970	SCREW, SPRING RTNG	V82935 770718							1
3102971	MOUNT, MINOLTA MD	V82063 770718							1
3512933	SCREW, PNHD, 1.7x5.5x2.9	Z75986 W760520							5
3102973	PIPE, SHADE	V42018 770718							1
3102974	CAM, APERTURE LIMIT	V82743 770718							1

*Not Available Separately.

COMPLETE PARTS LIST, Continued

Vivitar Part No.	Description	Part Code	Quantity						
			U	N	M	C	K	O	P
*3102975	FRAME, HELICOID, U MT	V82067 770718	1						
3102976	PLATE, STOP	V82752 770718	1						
3102977	RING, DEPTH OF FIELD, U MT	V82066 770718	1						
3102978	RING, APERTURE SETTING, U MT	V82068 770718	1						
3102979	FORK, APERTURE SETTING	V82747 770718	1						
3102980	SHIM, FOCUS, 0.5, U MT	V82753 770718	A/R						
3102981	SHIM, FOCUS, 0.2, U MT	V82941 770718	A/R						
3102982	SHIM, FOCUS, 0.1, U MT	V82943 770718	A/R						
3102983	RING, MOUNT FRAME	V82069 770718	1						
3102984	SETSCREW, 2.0x2.0	Z75910 B760720	1						
3102985	FORK, DIAPHRAGM CONTROL	V82750 770718	1						
3102986	SCREW, PIVOT, DIAPHRAGM LEVER	W25907 760817	1						
3102987	SPRING, WIRE	W25906 760817	1						
3102988	SCREW, PIVOT, TRANSFER LEVER	W25908 760817	1						
3102989	LEVER, AUTO DIAPHRAGM TRANSFER	W25710 760817	1						
3102990	BUSHING, PIVOT SCREW	W25804 760817	1						
3102991	RING, AUTO/MANUAL SELECT	W25518 760817	1						
3102992	LEVER, AUTO/MANUAL SELECT	V82070 770718	1						
3102993	PIN, DIAPHRAGM CONTROL COUPLING	Z38801 761025	1						
3102994	GUIDE	V82751 770718	1						
3102995	MOUNT, U/M-42	V82071 770718	1						
3102996	PIPE, SHADE, U MT	V42019 770718	1						
*3102997	HOUSING, DIAPHRAGM, U MT	V82065 770718	1						
3102998	SPRING, COIL, TENSION	V82946 770718	1						
3102999	CAM, APERTURE LIMIT	V82748 770718	1						
3103000	SPRING, COIL, TENSION	V82948 770718	1						1
3103001	LENS GROUP ASSY, 1ST	V42U50 N770718	1	1	1	1	1	1	1
*3103002	DIAPHRAGM HOUSING ASSY, NIKON	V42F60 N770718		1					
3103003	LENS GROUP ASSY, 2ND	V42F51 N770718	1	1	1	1	1	1	1
3103004	BLADE, DIAPHRAGM	V42F71 N770718	6	6			6	6	
3103005	RING, BLADE OPERATING	V42F72 N770718					1		
3103006	CRANK, CAM FOLLOWER	V42F73 N770718	1	1				1	
3103007	LENS ELEMENT, 5TH, AND HOUSING	V42F52 N770718	1	1	1	1	1	1	1
*3103008	DIAPHRAGM HOUSING ASSY, CANON	V42C61 N770718				1			
3103009	MOUNT, CANON	V42C88 N770718				1			
3103010	SPRING, BREECHLOCK CATCH	K24C64 N770718				1			
3103011	RING, DIAPHRAGM CONTROL TRANSFER	V42C83 N770718				1			
3103012	PIPE, SHADE	V42C84 N770718				1			
3103013	BLADE, DIAPHRAGM	V42C76 N770718			6	6			6
3103014	CRANK, CAM FOLLOWER	V42C74 N770718			1	1			1
*3103015	DIAPHRAGM HOUSING ASSY, O/OM	V42062 N770718							1
3103016	ARM, DIAPHRAGM CONTROL	V42086 N770718							1
3103017	RING, BLADE OPERATING	V42077 N770718							1
3103018	PLATE, STOP	V42078 N770718							1
3103019	ARM, DIAPHRAGM CONTROL	V42079 N770718							1
3103020	ARM, DIAPHRAGM CONTROL TRANSFER	V42F87 N770718		1					
*3103021	DIAPHRAGM HOUSING ASSY, P/K	V42P63 N770718							1
*3103022	DIAPHRAGM HOUSING ASSY, KONICA	V42K64 N770718					1		
3103023	SPRING, EE LATCH	V42K85 N770718					1		
3103024	RING, BLADE OPERATING	V42K80 N770718					1		
3103025	PLATE, SPRING ANCHOR	V42K81 N770718					1		
3103026	RING, APERTURE TRANSFER	V42K82 N770718					1		
*3103027	DIAPHRAGM HOUSING ASSY, MINOLTA	V42M65 N770718			1				
*3103028	DIAPHRAGM HOUSING ASSY, UNIV	V42U66 N770718	1						
3103029	ARM, DIAPHRAGM CONTROL TRANSFER	V42U67 N770718	1						
3103030	CRANK, AUTO DIAPHRAGM TRANSFER	W25U81 N760817	1						
3103065	RING, BLADE OPERATING	V42U89 N770718	1						

*Not Available Separately.

Automatic Fixed Mount Lens
24mm f/2.0 Compact

COMPLETE PARTS LIST, Continued

Vivitar Part No.	Description	Part Code	Quantity						
			U	N	M	C	K	O	P
3103067	RING, BLADE OPERATING	V42C75 N770718			1	1			1
*3103068	HOUSING, DIAPHRAGM	V82010 771224		1					
3103398	MOUNT ASSY, NIKON AI	V42F91 N770718		1					
3103400	MOUNT ASSY, CANON	V42C91 N770718				1			
3103402	MOUNT ASSY, MINOLTA MD	V42M91 N770718			1				
3103404	MOUNT ASSY, OLYMPUS OM	V42091 N770718						1	
3103406	MOUNT ASSY, PENTAX K	V42P91 N770718							1
3103408	MOUNT ASSY, KONICA AUTOREFLEX	V42K91 N770718					1		
3103410	MOUNT ASSY, UNIV	V42U91 N770718	1						
3103411	CAM, APERTURE	V82733 770718				1			
3103576	HELICOID ASSY, N/AI	V82F62 N770718		1					
3103577	HELICOID ASSY, M/MD	V82M62 N770718			1				
3103578	HELICOID ASSY, CANON	V82C62 N440718				1			
3103579	HELICOID ASSY, O/OM	V82062 N770718						1	
3103580	HELICOID ASSY, P/K	V82P62 N770718							1
3103581	HELICOID ASSY, K/AUTOREFLEX	V82K62 N770718					1		
3103582	HELICOID ASSY, UNIV	V82U62 N770718	1						
3512782	SCREW, SPRING POST	Z75946 760520							1
3512825	SCREW, SPECIAL HEAD	Z75934 W760520		1					
3512835	SCREW, SPRING POST	Z75914 760520	1	1	1	1	1	1	1
3512850	SPRING, COIL, EE SIGNAL PIN	Z75940 760520				1			
3512857	SPRING, COIL, DETENT	Z75956 760520				1			
3512870	WASHER, 1.7x3.5x0.4	Z75942 760520	1	1	1	1	1	1	1
3512898	BALL, STEEL, 1.6	Z75919 760520	2	60	78	2	80	60	75
3512899	BALL, STEEL, 1.2	Z75941 760520				120			
3512931	PLATE, MOUNT LOCKING	Z75741 760520							1
3512934	SCREW, STOP	Z75975 760520							1
3512974	SCREW, FLTHD, 1.4x2.5x2.0	Z75912 B760520	2			3			
3512980	SCREW, PNHD, 1.7x3.0x3.0	Z75913 B760520	5	5	5	5	5	5	5
3512984	SCREW, PNHD, 1.4x1.5x2.0	Z75922 B760520	2	4	4		8	2	2
3512985	SCREW, FLTHD, 1.7x2.5	Z75927 B760520							3
3512986	SCREW, PNHD, 1.4x2.0x1.8	Z75926 B760520	4					2	3
3512988	SETSCREW, 1.4x2.5	W25903 B76017	3	3	3	3	3	3	3
3512990	SCREW, PNHD, 1.4x1.5x2.0	Z75952 B760520	2	4	2		2		4
3518108	SCREW, METER COUPLING FORK	Z15917 770520		1					
3513725	SCREW, PNHD, 1.4x2.5x2.3, BLK	Z85910 B760615	4	4	4	4	4	4	4
3513843	SETSCREW, 1.4x2.0	Z75918 B760520	5	5	5	5	5	5	5
3513859	SCREW, FLTHD, 1.4x2.5x2.0	Z75963 B760520	3		3		3	5	3
3513886	SETSCREW, 1.7x2.5	Z75900 B760520	1	1	1	1	1	1	1
3513901	SCREW, COUNTERSUNK, 1.4x2.0, CHR	Z75963 W760520		1					
3514089	SCREW, FLTHD, 1.4x2.0, CHR	Z75912 W760520				1			

*Not Available Separately.



Faithfully restored from a poor photocopy by:

Prepared by:
Service Engineering Div.,

Vivitar Corporation
Corporate Offices:
1630 Stewart Street, Santa Monica, Ca 90406

Printed in U.S.A.

Vivitar is an International Trademark of Vivitar Corporation