

# TAMRON *Lenses*

Choose a Tamron  
high performance lens  
for your SLR camera



Interchangeable  
Mount System Lenses  
coupling to most  
popular 35 mm SLR  
cameras retaining  
full aperture TTL  
metering and automatic  
exposure control

# Tamron lenses offer new opportunities for the creative photographer.

Tamron, specialists in the design and manufacture of high quality precision optics, have developed the lenses with features and performance which previously were virtually unobtainable. These features make photography a more rewarding and exciting experience thereby utilizing to the full the creative potential of the photographer.

## CF (Continuous Focusing)

This feature allows focusing in one continuous movement from infinity to macro. The traditional macro button has been completely eliminated. This ensures that the photographer can frame his subject just how he wants without having to remove his eye from the viewfinder to change from normal range focusing to macro mode as the subject gets closer and closer. This is a concept that Tamron has pioneered world-wide in respect of zoom lenses.

## Tele-Macro

One of the major problems in macro photography was that the lenses did not allow sufficient camera-to-subject distance. Tamron has completely overcome this problem with the lenses featuring "tele-macro" as they permit a sufficient working distance even in macro photography.

This refinement has opened up new vistas as subjects which were previously difficult to photograph, such as insects and birds in a cage can now be tackled with ease and can be adequately lit. There is no need to have to get very close as before.

## Full Zoom Function

With lenses having "full zoom function" the photographer can enter into the macro mode at any focal length setting. Like the "tele-macro" feature this gives the photographer a new freedom opening up a dazzling new world. For example creative macro photographs can be taken in the course of zooming.

## Constant F-Number

With conventional lenses there are changes in the f-number or light transmission in macro photography because of the increased barrel extension. It was necessary to work out the increased exposure required by calculation or factors. However with Tamron zoom and telephoto lenses having this feature this is no longer necessary. The constant f-number feature ensures that there is no change in the f-number irrespective of whether the lens is focused on infinity or macro.

## M.O.D. Selector System

The Tamron M.O.D. (Minimum Object Distance) Selector System enhances the close focusing capabilities of your lens. It gives you different minimum operating distances for each focal length along the entire zoom range. The possibilities this provides you are endless, from macro photography at telephoto lens positions to close-up photography at wide-angle positions.

## BBAR Multi-Layer Coating

Conventional single-layer lens coatings, developed in the 1930's, effectively prevent flare and internal reflections only in the simplest lens designs. Through Tamron's unique Broad-Band Anti-Reflection coating, as many as 7 coating layers are deposited on each glass-to-air surface. The result: significantly increased light transmission, virtual elimination of flare and internal reflections, and a beautifully crisp and accurate rendition of even the most subtle colours in your pictures. This superior coating technology is but another reason for the continuing acceptance of Tamron lenses by photographers throughout the world.



Tamron Lens w/multi-layer BBAR coating



Lens w/conventional single-layer coating

## CF (Continuous Focusing)



At 15m,  $f=210\text{mm}$ ,  $F/8$ ,  $1/125\text{ sec.}$  (70-210mm  $F3.8/4$ )



At 7m,  $f=210\text{mm}$ ,  $F/8$ ,  $1/125\text{ sec.}$

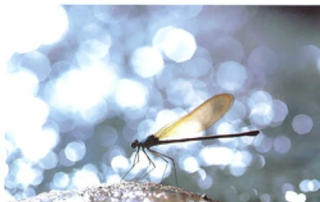


At 3m,  $f=210\text{mm}$ ,  $F/8$ ,  $1/125\text{ sec.}$



3 At 0.9m,  $f=210\text{mm}$ ,  $F/16$  synchronized with flash

## Tele-Macro



At 0.39m,  $F/5.6$ ,  $1/130\text{ sec.}$  Tele-macro 1:2 (SP 90mm  $F/2.5$ )



At 0.9m,  $f=210\text{mm}$ ,  $F/16$ ,  $1/30\text{ sec.}$  Tele-macro 1:2.9 (70-210mm  $F3.8/4$ )

## Full Zoom Function



Macro zooming during exposure  $F/8$ , Auto (SP 70-210mm  $F/3.5$ )



$f=28\text{mm}$ ,  $f/8$  Auto. (SD 28-135mm  $f/4-4.5$ )



$f=24\text{mm}$ ,  $f/5.6$  1/30 sec. (SP 24 - 48mm  $f/3.5-3.8$ )



5  $f=70\text{mm}$   $f/5.6$  1/60, synchronized with flash (28-70mm  $f/3.5-4.5$ )



$f=35\text{mm}$ ,  $f/11$ , 1/125 sec. (35-135mm  $f/3.5-4.5$ )



$f=210\text{mm}$ ,  $f/5.6$  1/125 sec. (70-210mm  $f/3.8-4$ )



$f=300\text{mm}$ ,  $f/8$  Auto. (SP 60-300mm  $f/3.8-5.4$ )

## Tamron Adaptall-2 Interchangeable Mount System



One of the most important reasons for the worldwide popularity of Tamron lenses is that the unique interchangeable mount system allows Tamron lenses to be quickly and easily coupled to most SLR cameras. So should you decide to buy another camera, instead of your lenses becoming obsolete you simply change the mount to suit your new camera. In nearly every case, full compatibility is retained which allows you of course to use all of the automatic functions offered by your camera.

### Adaptall-2 Mounts Available for:

- Canon FD/FT Series
- Contax/Yashica Series
- Fujica ST Series
- Fujica AX Bayonet Series
- Konica AR Series
- Leica R4 Series
- Mamiya ZE Series
- Minolta MD/SR Series
- Nikon AI/E Series
- Olympus OM Series
- Pentax ES/Spotmatic Series
- Pentax K Series
- Praktica S Electric
- Praktica B200
- Ricoh XR-P
- Rollei SL/Voigtlander VSL Series
- Topcon RE Series
- Universal (42mm Screw)
- "C" Mount for CCTV/VTR cameras and 16mm movie cameras
- "MS" Mount for CCTV/VTR cameras

\*Specifications and availability are subject to change without notice.

## Interchangeable Lenses Offer You Total Creative Control

One reason for the popularity of single-lens reflex cameras (SLRs) is their ease of use with a great variety of lenses of differing focal lengths. A single scene can be totally transformed by simply changing lenses. You can create images from the striking spatial perspective of a wide 24mm lens to the large magnification of distant objects with ultra-telephoto lenses.

And with a zoom lens, you can cover all the focal lengths between the two extremes without having to change lenses. At Tamron, we have for years specialised in producing optics of the highest quality, resulting in the comprehensive range of 35mm interchangeable lenses illustrated in this catalogue. Each lens has unique features to provide you with the ultimate in both high performance and high quality.

## With Every Tamron Lens, You Get Superb Image Quality Backed by Tamron's Advanced Technology

A fine SLR lens must start with the finest optical characteristics, such as contrast, resolution and colour fidelity. But it cannot end there. The majority of SLRs are light, compact, easy to use and versatile. Their lenses must be too. At Tamron, we believe there can be no compromise between quality and convenience of use. A Tamron lens must have the highest standards of both, without sacrificing one for the other. The result is a family of lenses developed with the latest technologies and crafted with skills that are not inhibited by established standards. Instead, Tamron creates new standards. All so that you are able to create pictures with faithful colour rendition, high contrast and unsurpassed definition of both highlights and shadows—even under the most demanding conditions. And all with equipment that is light, compact, and convenient to handle. Photography is the art of capturing fleeting moments which happen only once. At Tamron we know that, because we are photographers too. We wouldn't want to miss any of those moments. And we wouldn't want you to, either.

Model 13A  
Compact  
Super-Wide  
Zoom



A Compact Super-Wide Zoom Covering from a Wide 84° Angle of View to 48mm Standard Focal Length

**24-48mm F3.5-3.8**  
Compact Super Wide Angle



The SP 24-48mm is a remarkable compact super-wide zoom which lets you shoot in four ranges: 24mm super-wide angle, 28mm and 35mm wide angle and 48mm standard. The large 84 degree taking angle can give interesting perspective effects only available with super-wide angle lenses. As the lens incorporates a new type of optical system designed to minimize flare which is likely to occur at a wide angle position with conventional super-wide zooms, it provides high contrast images throughout the zooming range.

#### Key Features

- **Superior Optical Quality Giving High Contrast Images**

By the employment of a new optical system designed to compensate for distortion found with conventional super-wide angle lenses and for flare caused by off-axis comatic aberration, the lens provides outstanding optical quality throughout the focusing and zooming ranges.

- **Lightweight, Compact Design for Excellent Portability**

Weighs a mere 346 grams (12.2 oz.) and measuring only 65.5mm (2.6 in.) the lens provides excellent portability comparable to a standard lens.

- **Large, Perfect Hood (optional extra)**

A large petal-shaped hood which will accept a 77mm filter minimizes any unwanted reflections.

- **Constant F-Number**

F-values are identical throughout the focusing range.

- **Minimum Aperture of F/32**

The greater depth of field means more flexibility in picture-taking.

Model 44A  
New  
Standard  
Zoom



A New "Standard" Zoom Lens Covering The Most Popular Focal Lengths—from 28mm Wide-Angle to 70mm Medium Telephoto.

**28-70mm F3.5-4.5**  
New Standard Zoom



This new "standard" zoom lens yields uniformly high optical performance over the entire zoom range, encompassing an extremely popular range of focal lengths—from 28mm wide-angle to 70mm medium telephoto. A macro magnification ratio of 1:3.1 at 0.3 meters (11.8 in.) is made possible at a focal length of 70mm, by utilizing Tamron's M.O.D. (Minimum Object Distance) selector system.

#### Key Features

- **Compact and Lightweight**

Measuring only 74.9mm (2.9 in.) and weighing just 361 grams (12.7 oz.), the 28-70mm f/3.5-4.5 is a perfect lens for trips and fast snapshots—as well as serious compositions.

- **Five-in-One Zoom**

A macro magnification ratio of 1:3.1 at 0.3 meters (11.8 in.) is made possible at a focal length of 70mm, by utilizing Tamron's M.O.D. (Minimum Object Distance) selector system.

- **High Optical Performance**

Tamron's innovative two-group zoom design exhibits outstanding optical performance throughout the entire zoom and focusing range.

- **Tamron's Unique M.O.D. Selector System**

A macro magnification ratio of 1:3.1 at 0.3 meters (11.8 in.) is made possible at a focal length of 70mm, by utilizing Tamron's M.O.D. (Minimum Object Distance) selector system.

- **Bayonet-type Lens Hood**

A one-touch bayonet-type lens hood is available as an optional extra.

## Super Performance **SP**

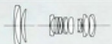
Model **28A**  
High-Performance  
Versatile Zoom



**Features A Unique "floating element" Optical Design for Edge-to-Edge Sharp, High-Contrast Performance over The Entire Focal Length Range**

**28-135mm F4.5**

High-Performance  
Versatile Zoom



Due to its unique "floating element" optical design in which all the four groups of lens elements including the focusing group move together while maintaining precise positions relative to each other, this lens delivers high optical performance over its entire range of focal lengths, while offering a very compact design.

### Key Features

#### • Versatile

The extended range zoom lens covers the most frequently used focal length range, from 28mm wide-angle to 135mm telephoto.

#### • Close Focusing

To expand close-focusing capability and enhance optical performance at the same time, this lens employs a unique twin-focusing system that operates when focusing closer than 2 meters (6.6 ft.). As a result, you can shoot macro photography of a maximum 1:4 magnification ratio.

#### • Constant F-Number

A constant f-number is maintained throughout the focusing range eliminating the need of recalculating exposure settings.

#### • Custom Matched SP Flat-Field 2X Tele-Converter

Doubles the focal length range to 56-270mm while retaining the original performance characteristics of the lens.

#### • Minimum Aperture of F/32

Provides greater depth of field. This is particularly desirable with today's fast 1,000 ASA colour films.

Model **40A**  
Compact  
Standard  
Zoom



**High-Performance 3.8X "Standard" Zoom. Offering All The Focal Lengths for General Photography—from 35mm Wide-Angle to 135mm Telephoto.**

**35-135mm F3.5 4.5**

Compact Standard Zoom



Tamron's new extended-range zoom lens offers higher performance and even more attractive features than before—encompassing focal lengths from 35mm (wide-angle) to 135mm (medium telephoto). The new 35-135mm features Tamron's innovative four-group multi-motion zoom design, and measures only 100.5mm (3.96 in.). This extremely compact package delivers outstanding optical performance throughout the entire focusing range, and offers—in a single lens—all the focal lengths desirable for general photography.

### Key Features

#### • High Zoom Ratio of 3.86X

Covers 35mm wide-angle to 135mm telephoto, making it suitable for most general photographic situations.

#### • Extremely Compact and Lightweight

Measures only 100.5mm (3.96 in.), 10% shorter than the previous model. Weighs only 547 grams (19.3 oz.) and uses standard 58mm filters.

#### • Innovative Optical Design

The combination of high refractive-index glass and Tamron's newly developed four-group multi-motion zoom design, gives superb definition and distortion-free performance at all focal lengths.

#### • Tele-Macro Capability

Tamron's special twin-focusing system offers a maximum magnification of 1:4 at a distance of 0.28m (11 in.) at a focal length of 35mm.

#### • Minimum Aperture of F/32

Provides superb depth of field, as well as the smaller apertures necessary for today's fast 1000 ASA color films.

#### • Constant F-Number

Constant F-number is maintained throughout the focusing range, eliminating the need for recalculating exposure settings.

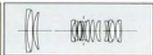
## Super Performance **SP**

Model **26A**  
Super  
Multi-Purpose  
Zoom



### A 6X Multi-Purpose Zoom Lens Featuring An Innovative Four-Group Multi-Motion Optical System

**35-210mm F3.5-4.2**  
Super Multi-Purpose Zoom



An innovative four-group multi-motion optical system helps reduce zoom-dependent aberration changes that may occur in extended zoom lenses. And by using an entirely new optical theory in its second lens group, outstanding optical performance is maintained throughout the zooming range. Yet the lens is remarkably compact and light in weight.

#### Key Features

- **Versatile**  
With its one-touch control, the 6X extended range zoom offers you the perfect frame for nearly every picture you may want to take.
- **One-Touch Control**  
The 6X multi-purpose zoom lens covers the focal length range of both standard (35-70mm) and tele (70-210mm) zoom lenses.
- **Close Focusing Capability**  
The minimum object distance of this lens is 1.6m (5.2 ft.) throughout the focal length range. In addition, it allows you closer focusing down to 0.3m (11.8 in.) for a maximum 1:3.8 macro magnification ratio at the f=35mm setting, without having to use a macro switcher button.
- **Constant F-Number**  
A constant f-number is maintained throughout the focusing range eliminating the need of recalculating exposure settings.
- **Custom Matched SP Flat-Field 2X Tele-Converter**  
Doubles the focal length range to 70-420mm while retaining the original performance characteristics of the lens.

Model **46A**  
CF Tele-Macro  
Compact  
Zoom



### The Best Selling Tele-Zoom Has Just Been Improved—Now with Extended 3X Zooming Capability.

**70-210mm F3.8-4**  
CF Tele-Macro Compact  
Zoom



This extremely versatile and fast tele-zoom lens has been redesigned for even higher performance—and now it's even more affordable. Based on its highly-acclaimed predecessor, Tamron's new 70-210mm f/3.8-4 zoom features a completely new 9-group, 12-element optical configuration, which minimizes aberrations and provides a sharp edge-to-edge image with superb resolution. Ideal for portraits, sports and nature photography, this tele-zoom incorporates Tamron's CF (continuous focusing) and tele-macro features, with single action control for focusing, zooming and macro.

#### Key Features

- **Extremely Compact and Lightweight**  
Measuring only 143.9mm (5.7 in.) in overall length, and weighing 580 grams (approx. 20 oz.) less than its predecessor, this new lens features an increased zoom ratio of 3X—covering a complete range of the most widely-used telephoto focal lengths.
- **Continuous Focusing (CF)**  
Tamron's CF function allows continuous focusing from infinity to macro—as close as 0.9 meters (35.4 in.).
- **Tele-Macro**  
Macro photography with a 1:2.9 magnification ratio is possible at a distance of 0.9 meters (35.4 in.). Automatic flash can also be used at this distance with complete ease.
- **Fast Maximum Aperture of F/3.8**  
Allows the use of fast shutter speeds and provides exceptionally bright viewfinder images for easier focusing by reducing split-image blackout.
- **Full Zoom Function**  
You can enter macro at any focal length and at any focus setting from infinity to the closest distance. You can even zoom while in macro.
- **Constant F-Number**  
Constant F-number is maintained throughout the focusing range, eliminating the need for recalculating exposure settings.



## Super Performance **SP**

Model 19AH  
Ultra-High  
Performance  
Tele-Zoom



### Tele-Zoom of Professional Specifications

**70-210mm F3.5**

Ultra-High Performance  
Tele-Zoom



The SP 70-210mm features  $f/3.5$  maximum aperture constant throughout its zoom range. By implementing new optical design theories, it holds aberrations such as astigmatism and image field curvature to the minimum. This results in excellent optical performance with high contrast and outstanding resolution comparable to prime lenses. The Tamron SP 70-210mm is an ultra-high performance tele-zoom that meets even the needs of demanding professional photographers.

#### Key Features

##### • F/3.5 Maximum Aperture

The maximum aperture of  $f/3.5$  is constant throughout the focal length range.

##### • Constant F-Number

The lens maintains constant f-numbers from infinity to the M.O.D. (Minimum Object Distance).

##### • High Optical Performance Even in Macro Range

The lens features full-range tele-macro capability for a 1:2.6 maximum magnification ratio at 0.85m (33.5 in.) from the subject at the  $f=210$ mm setting, providing high descriptive performance edge-to-edge.

##### • Continuous Focusing (CF) Tele-Macro

Enables you to focus from infinity to macro range without any switchover operation. Combined with the tele-macro and constant f-number features, automatic flash can be used with ease.

##### • Compact Design

Measures only 154.5mm (6.1 in.) in overall length with a Nikon mount.

##### • Innovative Lens Hood

The lens hood, coupled with the zoom ring, automatically changes the depth of the hood for optimum shading effects at all focal lengths.

##### • One-Touch Control

Lets you control four actions (zooming/focusing/macro/hood effects) with a single control ring.

## Super Performance **SP**

Model 30A  
Fast High  
Performance  
Tele-Zoom



### Super-Performance Low-Dispersion Tele-Zoom Offering A Maximum Aperture of F/2.8. The Ultimate High-Speed Tele-Zoom Lens.

**80-200mm F2.8LD**

Fast High-Performance  
Tele-Zoom



Zoom photography attains a new versatility with this exciting addition to the Tamron line. This fast, high-performance SP 80-200mm F/2.8 LD tele-zoom not only covers the most frequently used focal lengths, but also offers speed and optical quality comparable to top-quality fixed focal length telephoto lenses.

#### Key Features

##### • Fast F/2.8 Maximum Aperture

The fast  $f/2.8$  maximum aperture allows more versatility and adds new dimensions to zoom photography.

##### • Outstanding Optical Performance

This innovative design offers extremely sharp images from edge to edge over the entire zoom range—even at  $f/2.8$  (maximum aperture). The front optics group features special low-dispersion (LD) glass elements. The five elements of the variator and three elements of the compensator also incorporate special high-grade glass.

##### • Extremely Compact and Lightweight

Tamron's new optical design offers  $f/2.8$  performance in a very compact package—measuring only 178mm (7 in.) in length.

##### • Constant F-Number

Constant f-number is maintained throughout the focusing range, eliminating the need for recalculating exposure settings.

##### • Minimum Aperture of F/32

Provides superb depth of field, as well as the smaller apertures necessary for today's fast 1,000 ASA color films.

##### • Custom-Matched SP Flat-Field 2X Tele-Converter

Doubles the focal length, offering an extended range of 160-400mm.

##### • One-Touch Control

Lets you control zooming and focusing with a single control ring.

##### • Adaptall-2 Interchangeable Mount System

Like all Tamron Lenses, the SP 80-200mm F/2.8 LD can be used with virtually all SLR cameras, by utilizing Tamron's Adaptall-2 interchangeable mount system.

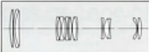
## Super Performance **SP**

Model **23A**  
5X  
Super  
Tele-Zoom



Spans The 60mm Standard Focal Length Range to The 300mm Ultra-Telephoto Range.

**60-300mm F3.8 5.4**  
5X Super Tele-Zoom



With an innovative four-group multi-motion optical design, zoom-induced aberration changes are reduced to the absolute minimum, resulting in high-contrast, edge-to-edge sharp images throughout the focal length range. This lens gives you a wide variety of photographic opportunities such as snapshots, portraiture and sports to wildlife, close-ups of animals and even insects.

### Key Features

#### • Versatile

The 5X zoom ratio enables you to span the spectrum of focal lengths from a standard 60mm to ultra-telephoto 300mm.

#### • Fast

Offers a fast maximum aperture of  $f/3.8$  ( $f/5.4$  at  $f=300\text{mm}$ ) in a compact, lightweight package. In addition, the lens features one-touch three-action control (zooming/focusing/macro) for convenience and fast operation.

#### • Almost Life-Size Macro Capability

The minimum object distance is 1.9 meters (6.2 ft.) throughout the zooming range. This lens allows close focusing down to 0.34m (13.4 in.) at the  $f=60\text{mm}$  setting for an almost life-size 1:1.55 maximum macro magnification ratio.

#### • $F/32$ Minimum Aperture

Provides greater depth of field. This is particularly useful with today's fast 1,000 ASA colour films.

#### • Custom Matched SP Flat-Field 2X Tele-Converter

Doubles the focal length range to 120-600mm while retaining the original performance characteristics of the lens.

#### • Constant F-Number

A constant  $f$ -number is maintained throughout the focusing range.

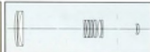
## Super Performance **SP**

Model **31A**  
Fast  
Ultra-Tele  
Zoom



An Ultra-Tele Zoom with A Maximum Aperture of  $F/5.6$ —Extremely Fast for A Lens of This Specification

**200-500mm F5.6**  
Fast Ultra-Tele Zoom



This lens covering the focal length of 200-500mm has an extremely fast maximum aperture of  $f/5.6$ , which is maintained throughout the entire zoom range, allowing the use of most TTL metering and AE systems. Yet it features a compact design measuring only 365mm (14.4 in.) in length. It is ideal for sports or other distant photography such as wildlife, aviation and surveillance applications.

### Key Features

#### • High Optical Performance

The 14-element 10-group optical design provides exceptionally high contrast and optimum freedom from chromatic and spherical aberrations. Also, the resolving properties of the lens are outstanding, even down to the minimum object distance.

#### • Close Focusing

The minimum object distance of 2.5 meters (8.2 feet) of the lens is the shortest of any 200-500mm zoom lenses available.

#### • Custom Matched SP High-Performance 2X Tele-Converters

Doubles the focal length of the lens to make a 400-1000mm ultra-tele zoom.

#### • Minimum Aperture of $F/32$

Provides greater depth of field. This is particularly useful with today's fast 1,000 ASA colour films.

#### • The lens' features also include a built-in tripod mount, a 43mm drop-in rear one-touch filter system and a built-in lens hood.

A convenient and durable hard carrying case is supplied as standard.

**Model 01B**  
Compact  
Super Wide  
Angle



**Distortion-Free High-Performance Super Wide Angle Lens Having Easy-to-Use Characteristics**

**24mm F2.5**

Compact Super Wide Angle



Consisting of 10 elements in 9 groups in which the shape and configuration are optimized to reduce astigmatism and curvature of image field to the absolute minimum. It provides a wide angle of view of 84° and consequently increased depth of field. Combined with the effect of greater perspective it's possible to obtain distortion free, corner to corner sharp images. This is a versatile lens for sports, landscape and reportage photography.

#### Key Features

- **Fast Aperture of F/2.5**  
Provides a viewfinder image 25% brighter than that of a f/2.8 lens for easier and quicker focusing.
- **Lightweight and Compact**  
Weighing only 230 grams (8.1 oz.) and measuring 64.5mm (2.5 in.) in diameter in spite of the fast f/2.5 aperture.
- **Minimum Object Distance of 0.25 meters (9.8 in.)**  
Focus-dependent aberration changes are minimized from infinity to the minimum object distance of 0.25 meters (9.8 in.).
- **Unique and Convenient Outer Design**  
Shows all the operating information where it can be most conveniently read.

**Model 02B**  
Compact  
Wide Angle



**Lightweight, Compact and Fast Wide Angle Lens Designed for Maximum Handling Convenience**

**28mm F2.5**

Compact Wide Angle



The optical configuration which is designed for compactness employs for its front group two concave and two convex lens elements designed in an ideal arrangement, thus reducing flare to the absolute minimum and solving the problem of comatic aberration which is likely to occur in compact lenses. The lens gives sharp, high contrast results and with its compact and lightweight design measuring 37.5mm (1.5 in.) in overall length and weighing only 180 grams (6.3 oz.) is very convenient in general or in indoor photography.

#### Key Features

- **Fast Aperture of F/2.5**  
Provides a viewfinder image 25% brighter than that of a f/2.8 lens for easier and quicker focusing.
- **Lightweight and Compact**  
Measures 37.5 mm (1.5 in.) in overall length and weighs 180 grams (6.3 oz.) only, giving excellent portability.
- **Minimum Object Distance of 0.25 meters (9.8 in.)**  
Giving remarkable definition and accurate reproduction from infinity to the minimum object distance of 0.25 meters (9.8 in.).
- **Minimum Aperture of F/32**  
First lens in this class to have minimum aperture of f/32, providing greater depth of field.
- **Unique and Convenient Outer Design**  
Shows all the operating information where it can be most conveniently read.

## Super Performance **SP**

Model **555B**  
Tele-Macro  
Catadioptric



**Tele-Macro Catadioptric Capable of Achieving 1:3 Magnification Ratio at 1.7 Meters**

**500mm F8**  
Tele-Macro Catadioptric



The newly developed design incorporates special rear reflex mirrors for its main and auxiliary mirrors. Focus-dependent aberration changes are thereby reduced to the absolute minimum giving superlative performance from infinity to the MOD of 1.7 meters (66.9 in.).

### Key Features

- **Tele-Macro**  
Gives a magnification ratio of 1:3 at 1.7 meters (66.9 inches).
- **Continuous Focusing (CF)**  
Enables you to focus from infinity to the MOD (Minimum Object Distance).
- **Lightweight, Compact Design**  
The SP 500mm F/8 weighing only 535 grams (18.9 oz.), measuring 91.5mm (3.6 in.) in overall length and 84mm (3.3 in.) in diameter with a macro capability of 1:3 at 1.7 meters (66.9 in.) MOD makes this lens truly compact for such a specification. Hand-held photography is now possible with today's high-speed colour films.
- **Silver-Sputtered Mirrors for Greater Light Transmission**  
Special silver-coated Mangin (rear reflection) mirrors whose durability far surpasses the American military standards for tough environmental protection enable a high light reflection value of more than 95%.
- **Constant F-Number**  
The f-number remains the same from infinity to the MOD. Combined with the tele-macro capability use with automatic flash becomes very easy.
- **Exclusive Filter Set, and Lens Hood**  
Specially manufactured 30.5mm filters are available as optional extras that are screwed onto the rear element thread. Lens hood is reversible screw-in type.
- **Custom Matched SP Flat-Field 2X Tele-Converter**

## Super Performance **SP**

Model **200F**  
High-Performance  
2X  
Tele-Converter



**Optically Superior 2X Tele-Converter Doubles Focal Length and Magnification Ratio While Retaining High Image Quality of The Original Lens**

**High-Performance  
2X Tele-Converter**



This new SP 2X tele-converter consists of 6 elements in a 4-group optical system with a unique, advanced optical design to give superb image quality from edge to edge.

### Key Features

- **Outstanding Performance**  
Specially designed to couple with Tamron telephoto and tele-zoom lenses, this tele-converter's new optical design compensates for spherical and chromatic aberrations, minimizing image field curvature for superb edge to edge image quality.
- **Unique New Optical Design**  
The 6-element, 4-group optical system uses high diffraction glass and is divided into two major parts: the front group with negative refractive power and the rear group with positive refractive power. This provides outstanding image quality with Tamron tele-zoom lenses.
- **Compatible with Telephoto and Tele-Zoom Lenses**  
The design of this 2X tele-converter complements the optical characteristics of the following Tamron lenses: 135mm F/2.5, SP300mm F/2.8, SP300mm F/5.6, SP350mm F/5.6, SP500mm F/8, SP200-500mm F/5.6.
- **Doubles The Focal Length**  
Gives you 2X magnification with the original lens—broadening the scope of your photographic flexibility.
- **Incredibly Compact**  
The tele-converter's compact design helps retain the handling qualities of the original lens. It is a mere 56.7mm (2.2 inches) in length.

Model: 140F  
High-Performance  
1.4X  
Tele-Converter



Designed Specifically for Use with Long Focal-Length Tamron Tele-Zoom and Telephoto Lenses and to Maintain Maximum Performance and Image Quality

High-Performance  
1.4X Tele-Converter



This SP 1.4X tele-converter consists of a 5-element, 3-group optical system in a totally new Tamron Adaptall-2 tele-converter design to maximize results when used with specific lenses.

#### Key Features

- **Superb Performance**  
The sophisticated optical design of this 1.4X tele-converter corrects various aberrations normally arising with ordinary tele-converters and multipliers... assuring outstanding quality photo results.
- **Specific Lens Compatibility**  
This 1.4X tele-converter is supplied as a standard accessory with the new Tamron SP 300mm f/2.8 LD IF lens. It is also compatible with all Tamron fixed focal length lenses of 90mm or greater—plus the new SP200-500mm f/5.6 zoom lens.
- **Only a One-Stop Exposure Increase**  
The SP 1.4X tele-converter keeps the high speed of the original lens and adds additional telephoto capacity as often desired by the professional. Doubling is not always an advantage. The one stop exposure increase, for example, means the Tamron SP 300mm f/2.8 becomes a 420mm f/4 fast ultra-telephoto.
- **Compact and Lightweight**  
This tele-converter is remarkably compact, measuring just 21.9mm (0.86 inches) and weighing just 169 grams (5.96 oz.) while increasing the focal length and magnification ratio of the original lens by 1.4X.

Model: 01F  
Flat-Field  
2X  
Tele-Converter



Doubles The Focal Length and The Magnification Ratio Whilst Retaining The High Quality of The Original Lens

2X Tele-Converter  
Flat-Field



The SP 2X flat-field tele-converter consisting of 6 elements in 5 groups and custom matched to Tamron's telephoto and most zoom lenses breaks through the traditional concept of tele-converters and multipliers.

#### Key Features

- **Outstanding Performance**  
The special optical configuration enables curvature of field to be reduced to the absolute minimum. Circumferential light loss is also reduced and the high quality of the original lens is maintained.
- **Compatible with Large Aperture Fast Lenses**  
A large aperture fast lens can be used at its maximum aperture without introducing fall-off.
- **Doubles The Focal Length**  
and the magnification ratio broadening your photographic horizon. The maximum magnification ratio of the original lens can be doubled while retaining the long working distance.
- **Greater Depth of Field**  
The combination of the SP tele-converter and a Tamron lens having a minimum aperture of f/32 gives increased depth of field equivalent to f/64 for added sharpness.
- **Couples with All Lenses from F/2.5 to F/32**  
The effective aperture in use from f/5 to f/64 is indicated on the tele-converter.

## Specifications of TAMRON Zoom Lenses

Model	Focal Length (mm)	Aperture Range	Angle of View	Lens Construction (Groups/Elements)	Min. Focus from Film Plane in. (m)	Macro Mag. Ratio [w/converter]	Filter Size (mm)	Diameter in. (mm)	Length at ∞ in. (mm) [w/Nikon mount]	Weight oz. (gm)	Lens Hood	Accessory
13A	24-48	F3.5-3.8 -32 AE	84°-48°	9/10	23.6 (0.6)	—	77 in hood	2.5 (64.5)	2.4 (61.0) [2.6 (65.5)]	12.2 (346)	Bayonet type	Hood accepts 77mm filters.
44A	28-70	F3.5-4.5 -22 AE	75°-34°	8/8	11.8 (0.3)	1:3.15	62	2.7 (69.0)	2.8 (70.4) [2.9 (74.9)]	12.7 (361)	Bayonet type	Accepts F-system 2X teleconverters.
20A	28-135	F4-4.5 -32 AE	75°-18°	10/17	78.7 (2.0) (f=135mm)	1:4 [1:2] (f=28mm)	67	2.8 (70.0)	4.2 (106.0) [4.4 (105.5)]	25.2 (715)	Bayonet type	Accepts 01F converter.
40A	35-135	F3.5-4.5 -32 AE	63°-18°	13/15	59.0 (1.5) (f=135mm)	1:4 [1:2] (f=35mm)	58	2.6 (65)	3.8 (96.0) [4.0 (103.5)]	19.3 (547)	Bayonet type	Accepts 01F converter.
26A	35-210	F3.5-4.2 -22 AE	64°-11°	12/16	63.0 (1.6) (f=210mm)	1:3.8 [1:1.9] (f=35mm)	67	2.9 (73.0)	4.8 (121.2) [4.9 (125.7)]	30.9 (875)	Bayonet type	Accepts 01F converter.
46A	70-210	F3.8-4 -22 AE	34°-11°	9/12	35.4 (0.9)	1:2.9	58	2.6 (66)	5.5 (139.4) [5.7 (143.9)]	20.5 (580)	Screw-in type	Accepts 01F converter.
19AH	70-210	F3.5 -32 AE	34°-12°	11/15	33.5 (0.85)	1:2.6 [1:1.3] (f=20mm)	62	2.8 (71.0)	5.9 (150) [6.1 (154.5)]	30.3 (860)	Screw-in type	Accepts 01F converter.
30A	80-200	F2.8 -32 AE	30°-12°	12/16	59.0 (1.5)	—	77	3.1 (80.0)	6.8 (173.5) [7.0 (178)]	43.0 (1218)	Bayonet type	Accepts 01F converter.
23A	60-300	F3.8-5.4 -32 AE	40°-8°	11/15	74.8 (1.9) (f=300mm)	1:1.5 [1:0.7] (f=60mm)	62	2.7 (68.0)	6.4 (161.5) [6.5 (166.0)]	29.7 (837)	Bayonet type	Accepts 01F converter.
31A	200-500	F5.6 -32 AE	12°-5°	10/14	98.4 (2.5)	1:3.5 [1:1.75]	43 rear (95 front)	4.1 (105.0)	14.2 (360.5) [14.4 (365.0)]	96.1 (2724)	Built-in type retractable	Accepts 01F, 140F, 200F converters.

## Specifications of TAMRON Prime Lenses

Model	Focal Length (mm)	Aperture Range	Angle of View	Lens Construction (Groups/Elements)	Min. Focus from Film Plane in. (m)	Macro Mag. Ratio [w/converter]	Filter Size (mm)	Diameter in. (mm)	Length at ∞ in. (mm) [w/Nikon mount]	Weight oz. (gm)	Lens Hood	Accessory
01B	24	F2.5 -22 AE	84°	9/10	9.8 (0.25)	—	55	2.5 (64.5)	1.5 (38) [1.7 (42.3)]	8.1 (230)	Screw-in type	
02B	28	F2.5 -32 AE	75°	7/7	9.8 (0.25)	1:5.8	49	2.5 (64.5)	1.3 (33) [1.5 (37.5)]	6.3 (180)	Screw-in type	
52B	90	F2.5 -32 AE	27°	6/8	15.4 (0.39)	1:2 [1:1]	49	2.5 (64.5)	2.8 (68) [2.6 (70.5)]	14.8 (420)	Screw-in type	Accepts 01F, 140F converters.
60B	300	F2.8 -32 AE	8°	7/10	98.4 (2.5)	—	43 rear (112 front)	4.6 (117.5)	8.3 (210.5) [8.5 (216)]	73.9 (2,068)	Bayonet type	Accepts 01F, 140F, 200F converters. 140F 1.4X converter and palm-holder supplied as standard accessory.
558B	500	F8	5°	4/7	66.9 (1.7)	1:3 [1:1.5]	30.5 rear (82 front)	3.3 (84)	3.4 (87) [3.6 (91.5)]	18.9 (535)	Screw-in reversible	Accepts 01F, 140F, 200F converters. Additional 30.5mm rear and 82mm front filters available as optional extras.
200F	2X the focal length of original lens	(Original lens F2)	—	4/6	Retains the min. focus of original lens	2X the mag. ratio of original lens	—	2.6 (66.5)	2.2 (56.7) [2.4 (61.2)]	9.9 (282)		
140F	1.4X the focal length of original lens	(Original lens F1.4)	—	3/5	Retains the min. focus of original lens	1.4X the mag. ratio of original lens	—	2.5 (64.5)	0.86 (21.9) [1.04 (26.4)]	6.0 (169)		
01F	2X the focal length of original lens	(Original lens F2)	—	5/6	Retains the min. focus of original lens	2X the mag. ratio of original lens	—	2.5 (64.5)	1.7 (42.5) [1.9 (47)]	8.8 (250)		

## TAMRON Photographic Accessories

A comprehensive range of Tamron optional accessories brings new standards of excellence to owners of all popular 35mm SLR lenses.

### Exclusive Lens Hoods

Special Tamron lens hoods available as optional extras for the Tamron SP 24-48mm f/3.5-3.8, 28-70mm f/3.5-4.5, SP 28-80mm f/3.5-4.2, 35-70mm f/3.5, SP 35-80mm f/2.8-3.8, SP 28-135mm f/4-4.5, SP 35-135mm f/3.5-4.2, SP 35-210mm f/3.5-4.2, SP 17mm f/3.5, SP 28mm f/2.5 and SP 90mm f/2.5.



### Special Cases for Tamron Short Zooms/SP 90mm and Telephoto/Zoom Lenses

One case is available for use with Tamron short zooms and SP 90mm f/2.5 and another for zooms such as the 70-210mm (without hood) with the camera in use. The case is available in three sizes (small, medium and large) to fit most popular SLR's. A soft case is also available to accept a camera fitted with Tamron short zoom lenses.



### Filters for SP 500mm F/8 and 350mm F/5.6 Tele-Macro Catadioptric



Rear 30.5mm filter set consisting of ND4X, Y52, 056 and R60 available. ND2X and 81B rear filters and a special 82mm normal front filter also available as optional extras.

### F-(Fixed) System 2X Auto Tele-Converters



A range of high quality 7-element fixed mount 2X auto tele-converters with BBAR coating. Available for Pentax/Praktica screw mount, Pentax-K, Nikon AI, Minolta MD, Olympus OM, Canon FD, Konica and Contax/Yashica. Supplied with case.

Distributed by:

**TAMRON**  
INDUSTRIES, INC.

P.O. Box 388

24 Valley Road,

Port Washington, N.Y. 11050

Tel: 516-883-8800/212-219-1775

West Coast Authorized Service Station:

UNITECH CAMERA REPAIR

6481 Orangethorpe Ave.,

Suite 29, Buena Park, CA, 90620

Tel: 714-522-6542

### TAMRON International Service

Should any TAMRON product require service, TAMRON's international service is available in over 48 nations worldwide.

## TAMRON co., LTD.

Manufacturers of lenses for photographic, industrial, laboratory, video, and scientific applications.

(Post No. 330) 1385 Hasunuma, Omiya, Saitama, Japan  
Tel: (0486) 83-8282 Fax: (0486) 83-8289 Telex: J23977  
TAMRON Cable: TAMRONTAISEI OMIYA